

HI-TACAN Z RWY 13

TACAN DMA Chan 123	APCH CRS 133°	Rwy Idg 13,645 TDZE 2615 Arprt Elev 2704
------------------------------	-------------------------	---

[USAF]

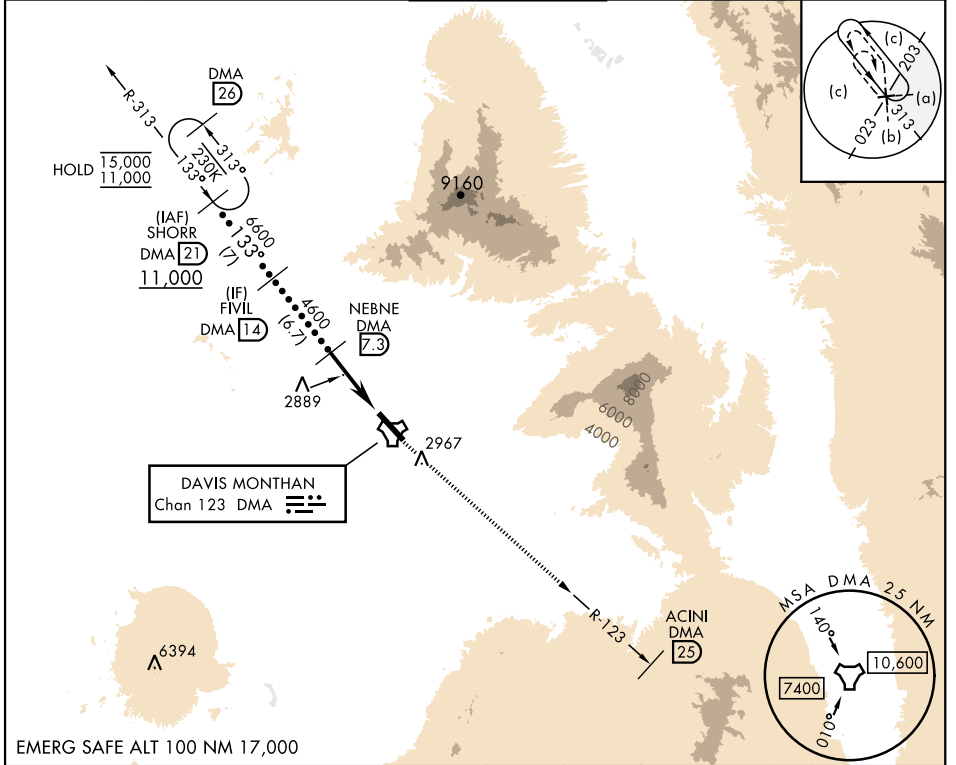
DAVIS-MONTHAN AFB (KDMA)

RNAV or RADAR required.

▼ *Circling not authorized SW of Rwy 13-31.

MISSED APPROACH: Climbing to 8000 intercept DMA TACAN R-123 to ACINI. Expect RADAR vectors.

ATIS★ 132.3 270.1	TUCSON APP CON 066°-274° 119.4 318.1 275°-065° 125.1 269.55	TOWER 118.85 253.5	GND CON 121.8 275.8	CLNC DEL 121.8 275.8
-----------------------------	---	------------------------------	-------------------------------	--------------------------------



SW-4, 26 DEC 2024 to 23 JAN 2025

SW-4, 26 DEC 2024 to 23 JAN 2025

EMERG SAFE ALT 100 NM 17,000

	8000 DMA R-123	ACINI DMA 25	ELEV 2704	TDZE 2615
	SHORR DMA 21 11,000	FIVIL DMA 14 6600	NEBNE DMA 7.3 4600	DMA ESACLE DMA 2 DMA TACAN
	133°		3.17° TCH 58	5.3 NM
CATEGORY	C	D	E	
S-13	3160-1½	545 (500-1½)		
CIRCLING*	3280-1½ 576 (600-1½)	3420-2¼ 716 (800-2¼)	3460-2¾ 756 (800-2¾)	
			HIRL Rwy 13-31 REIL Rwy 13	

HI-TACAN Z RWY 13

