

TUCSON, ARIZONA

ILS or LOC Y RWY 31

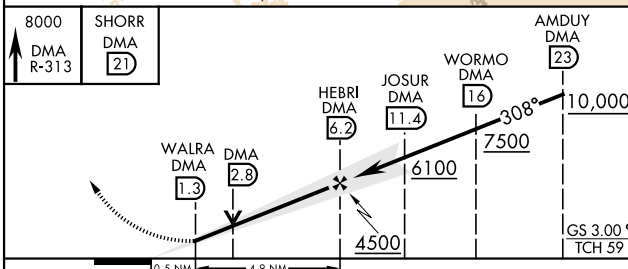
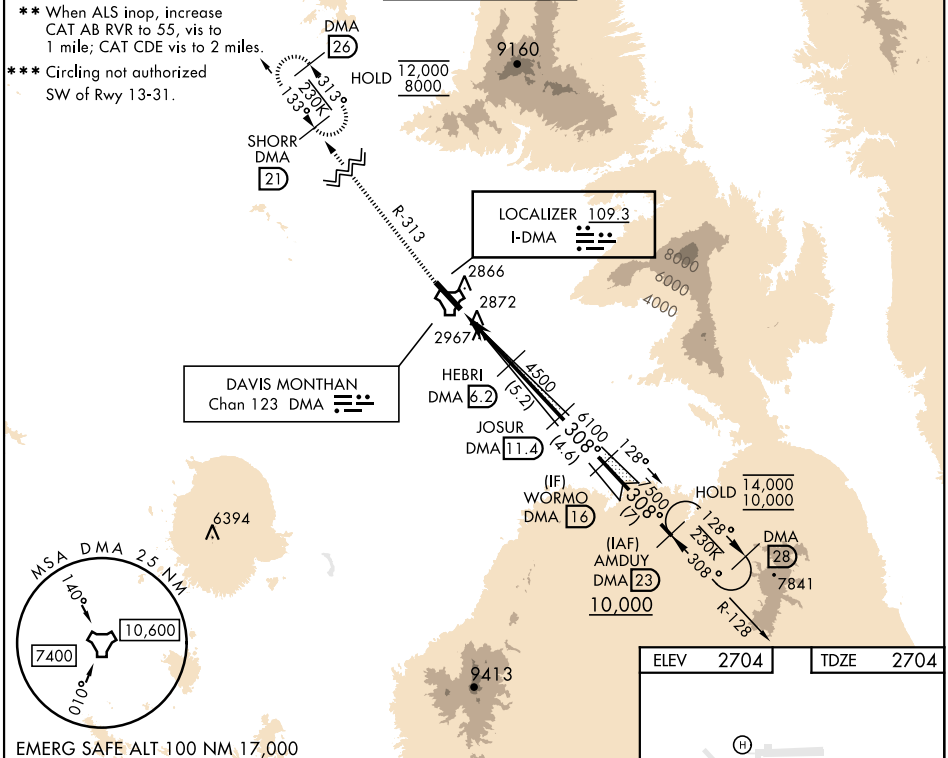
LOC I-DMA 109.3	APCH CRS 308°	Rwy Idg 13,645 TDZE 2704 Arprt Elev 2704
---------------------------	-------------------------	---

[USAF]

DAVIS-MONTHAN AFB (KDMA)

DME or RADAR required * When ALS inop, increase RVR to 40, vis to ¼ mile.	ALSF-1 (A1)	MISSED APPROACH: Climb to 8000, intercept DMA TACAN R-313 to SHORR and hold, continue climb-in-hold to 8000.
--	-----------------------	--

ATIS★ 132.3 270.1	TUCSON APP CON 066°-274° 119.4 318.1 275°-065° 125.1 269.55	TOWER 118.85 253.5	GND CON 121.8 275.8	CLNC DEL 121.8 275.8
-----------------------------	---	------------------------------	-------------------------------	--------------------------------



CATEGORY	A	B	C	D	E
S-ILS 31*	2904/24 200 (200-½)				
S-LOC 31**	3400/24 696 (700-½)	3400-1½ 696 (700-1½)			
CIRCLING***	3400-1 696 (700-1)	3400-2 696 (700-2)	3420-2¼ 716 (800-2¼)	3460-2¾ 756 (800-2¾)	

ELEV	2704	TDZE	2704
HIRL Rwy 13-31 REIL Rwy 13			
FAF to MAP 4.9 NM			
Knots	60	90	120 150 180
Min:Sec	4:54	3:16	2:27 1:58 1:38

TUCSON, ARIZONA
Orig 31OCT24

32°10'N-110°53'W

DAVIS-MONTHAN AFB (KDMA)

ILS or LOC Y RWY 31

SW-4, 26 DEC 2024 to 23 JAN 2025

SW-4, 26 DEC 2024 to 23 JAN 2025