

TUCSON, ARIZONA

TACAN Y RWY 13

DAVIS-MONTHAN AFB (KDMA)

TACAN DMA Chan 123	APCH CRS 133°	Rwy Idg 13,645 TDZE 2615 Arprt Elev 2704
------------------------------	-------------------------	---

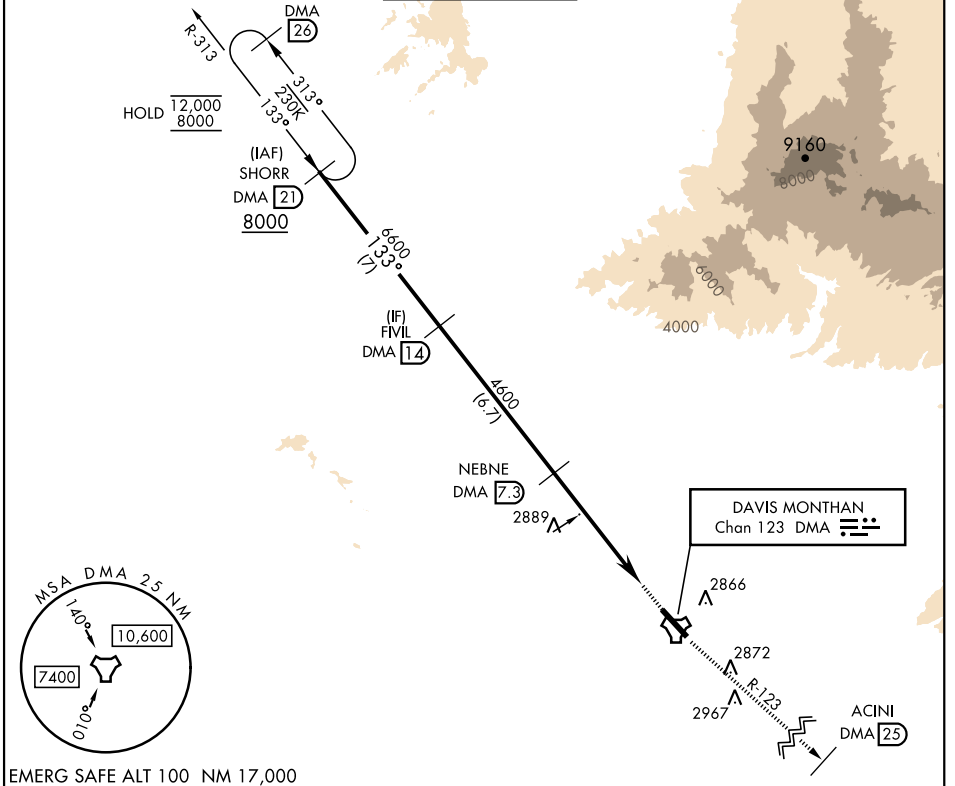
[USAF]

RNAV or RADAR required.

MISSED APPROACH: Climb to 8000 intercept DMA TACAN R-123 to ACINI. Expect RADAR vectors.

* Circling not authorized SW of Rwy 13-31.

ATIS★ 132.3 270.1	TUCSON APP CON 066°-274° 119.4 318.1 275°-065° 125.1 269.55	TOWER 118.85 253.5	GND CON 121.8 275.8	CLNC DEL 121.8 275.8
-----------------------------	---	------------------------------	-------------------------------	--------------------------------



EMERG SAFE ALT 100 NM 17,000

SHORR DMA 21	FIVIL DMA 14	NEBNE DMA 7.3	ESAL DMA 2	DMA TACAN	ELEV 2704	TDZE 2615
8000	6600	4600	4600			
133°		3.17°				
		TCH 58				
		5.3 NM		0.5 NM		
CATEGORY	A	B	C	D	E	
S-13	3160/55 545 (500-1)		3160-1 $\frac{1}{8}$	545	(500-1 $\frac{1}{8}$)	
CIRCLING*	3200-1 496 (500-1)	3220-1 516 (600-1)	3280-1 $\frac{1}{8}$ 576 (600-1 $\frac{1}{8}$)	3420-2 $\frac{1}{4}$ 716 (800-2 $\frac{1}{4}$)	3460-2 $\frac{3}{4}$ 756 (800-2 $\frac{3}{4}$)	HIRL Rwy 13-31 REIL Rwy 13

TUCSON, ARIZONA

32°10'N-110°53'W

DAVIS-MONTHAN AFB (KDMA)

Orig 28NOV24

TACAN Y RWY 13

SW-4, 26 DEC 2024 to 23 JAN 2025

SW-4, 26 DEC 2024 to 23 JAN 2025