

WAAS CH <b>93545</b> <b>W12A</b>	APP CRS <b>126°</b>	Rwy Idg <b>1099E</b> TDZE <b>2599</b> Apt Elev <b>2643</b>
--	------------------------	--

# RNAV (GPS) Z RWY 12

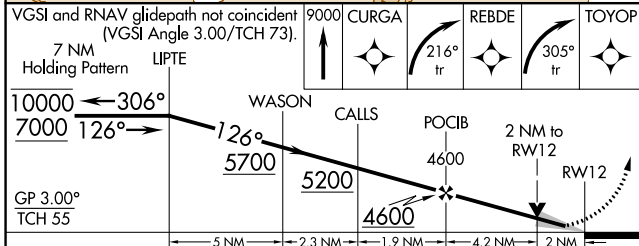
TUCSON INTL (TUS)

RNP APCH - GPS.	MALSR	MISSED APPROACH: Climb to 9000 direct CURGA and climbing right turn on 216° track to REBDE and climbing right turn on 305° track to TOYOP and hold, continue climb-in-hold to 9000.
<p>⚠ For uncompensated Baro-VNAV systems, LNAV/VNAV NA below -2°C or above 54°C. For inop ALS, increase LNAV/VNAV all Cats visibility to RVR 4500, and increase LNAV Cats C/D visibility to 2 SM.</p>		

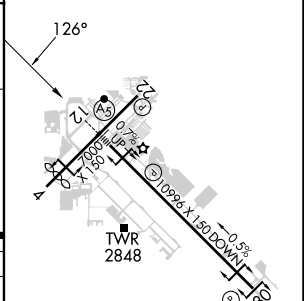
ATIS <b>123.8 279.65</b>	TUCSON APP CON <b>119.4 318.1</b>	TUCSON TOWER <b>118.3 257.8</b>	GND CON <b>120.025 348.6</b>	CLNC DEL <b>126.65 326.2</b>
-----------------------------	--------------------------------------	------------------------------------	---------------------------------	---------------------------------



<p>VGSI and RNAV glidepath not coincident (VGSI Angle 3.00/TCH 73).</p> <p>7 NM Holding Pattern LIPTES</p>	<p>9000 CURGA</p>	<p>216° tr REBDE</p>	<p>305° tr TOYOP</p>
--	-------------------	----------------------	----------------------



ELEV 2643	TDZE 2599
-----------	-----------



CATEGORY	A	B	C	D
LPV DA		2799/24	200 (200-½)	
LNAV/VNAV DA		2905/24	306 (300-½)	
LNAV MDA	3300/24	701 (700-½)	3300-1½	701 (700-1½)
CIRCLING	3300-1	657 (700-1)	3300-2	3640-3
			657 (700-2)	997 (1000-3)

HIRL Rwy 12-30  
MIRL Rwy 4-22  
REIL Rwy 22 and 30

SW-4, 26 DEC 2024 to 23 JAN 2025

SW-4, 26 DEC 2024 to 23 JAN 2025