

VORTAC TCC 113.6 Chan 83	APP CRS 201°	Rwy Idg TDZE Apt Elev 7104 4047 4065
--	------------------------	--

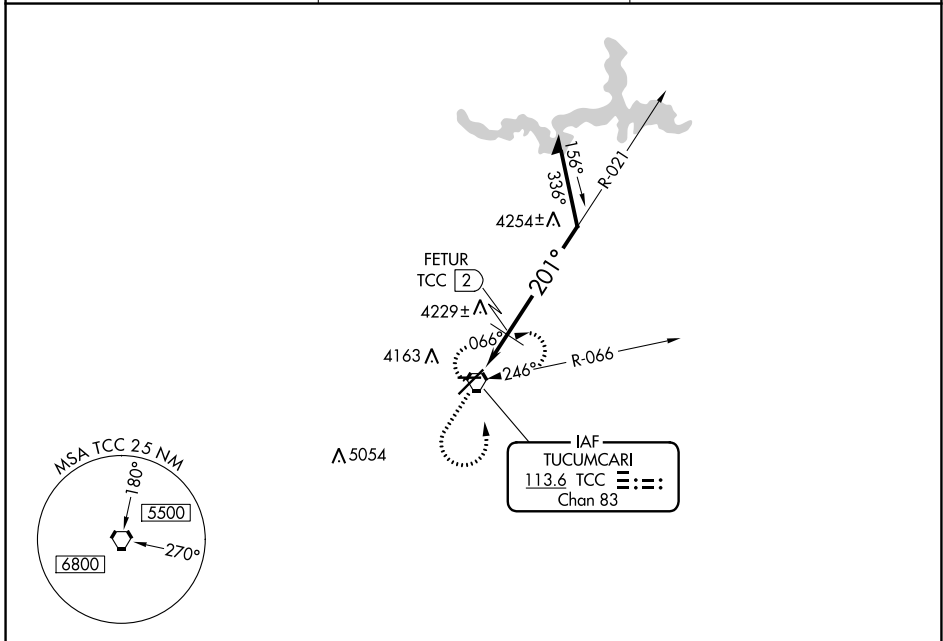
VOR RWY 21

TUCUMCARI MUNI (TCC)

▼ If local altimeter setting not received, procedure NA. Circling NA for Cat D north of Rwy 8 and northwest of Rwy 21.

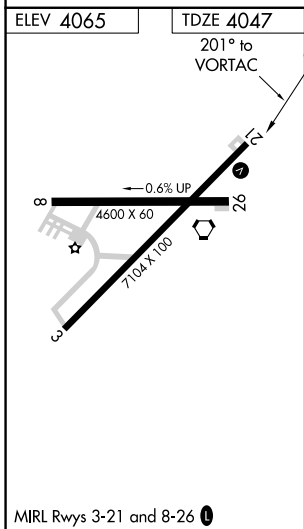
MISSED APPROACH: Climb to 5100 then climbing left turn to 6100 direct TCC VORTAC and hold.

ASOS 119.275	ALBUQUERQUE CENTER 126.85 285.6	UNICOM 122.95 (CTAF) 0
------------------------	---	----------------------------------



SW-1, 26 DEC 2024 to 23 JAN 2025

SW-1, 26 DEC 2024 to 23 JAN 2025



		A 5229		
5100	6100	TCC		
↑	↶	⬡		
		TCC VORTAC	Remain within 10 NM	
		6100	021°	
		4600	201°	
		5800		
		FETUR TCC 2		
		≤ 3.03°		
		TCH 52		
		1.6 NM		
CATEGORY	A	B	C	D
S-21	4600-1	553 (600-1)	4600-1½ 553 (600-1½)	4600-1¾ 553 (600-1¾)
C CIRCLING	4600-1	535 (600-1)	4600-1½ 535 (600-1½)	4640-2 575 (600-2)
FETUR FIX MINIMUMS				
S-21	4480-1	433 (500-1)	4480-1¼ 433 (500-1¼)	4480-1½ 433 (500-1½)
C CIRCLING	4580-1	515 (600-1)	4580-1½ 515 (600-1½)	4640-2 575 (600-2)