

TULSA, OKLAHOMA

HI-VOR Z or TACAN Z RWY 26

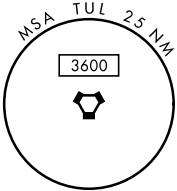
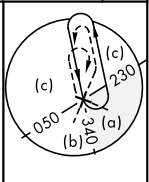
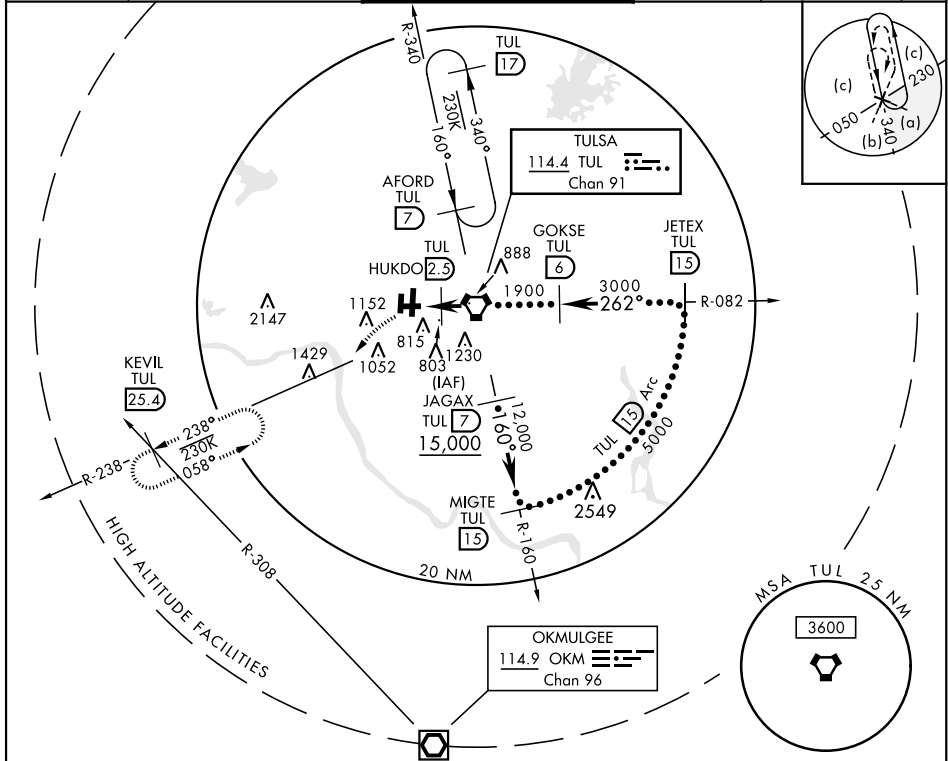
VORTAC TUL 114.4 Chan 91	APCH CRS 262°	Rwy ldg TDZE 652 Arprt Elev 678	[USAF]	TULSA INTL (KTUL)
--	-------------------------	---	--------	-------------------

DME required

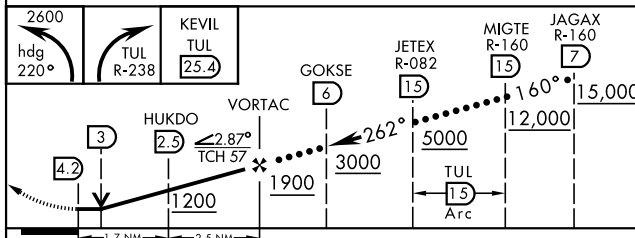
*When ALS inop, increase CAT CDE vis to 1¼ miles.
**CAT E circling not authorized S of Rwy 8-26.

MALS R (A5) MISSED APPROACH: Climbing left turn to 2600 on heading 220° and TUL VORTAC R-238 to KEVIL/TUL 25.4 DME and hold.

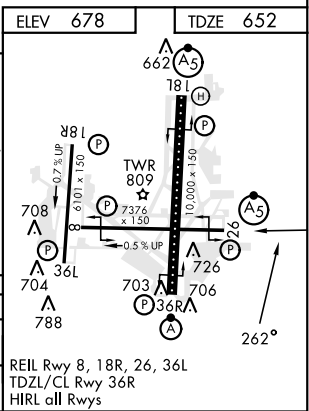
ATIS 124.9 377.2	APP CON 124.0 338.3 175°-354° 119.1 351.8 355°-174°	TOWER 121.2 310.8 Rwy 18L-36R, 8-26 118.7 257.8 Rwy 18R-36L	GND CON 121.9 348.6	CLNC DEL 134.05 284.7	ASR
----------------------------	---	---	-------------------------------	---------------------------------	-----



EMERG SAFE ALT 100 NM 4500



CATEGORY	C	D	E
S-26*	1080-¾	428	(500-¾)
CIRCLING**	1520-2½ 842 (900-2½)	1520-2¾ 842 (900-2¾)	1520-3 842 (900-3)



TULSA, OKLAHOMA 36°12'N-95°53'W TULSA INTL (KTUL)

Amdt 3B 30NOV23

HI-VOR Z or TACAN Z RWY 26

SC-1, 26 DEC 2024 to 23 JAN 2025

SC-1, 26 DEC 2024 to 23 JAN 2025