

VORTAC TUL 114.4 Chan 91	APP CRS 082°	Rwy Idg TDZE Apt Elev 7376 671 678
---------------------------------------	------------------------	--

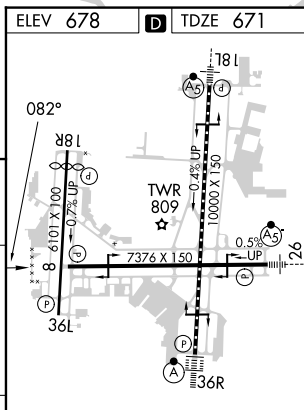
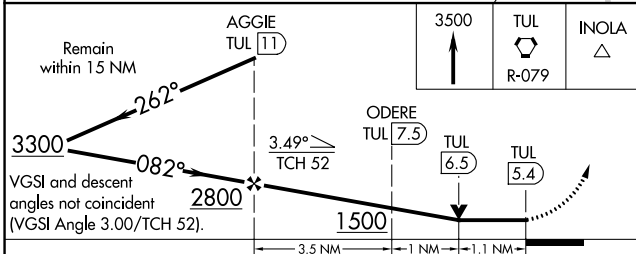
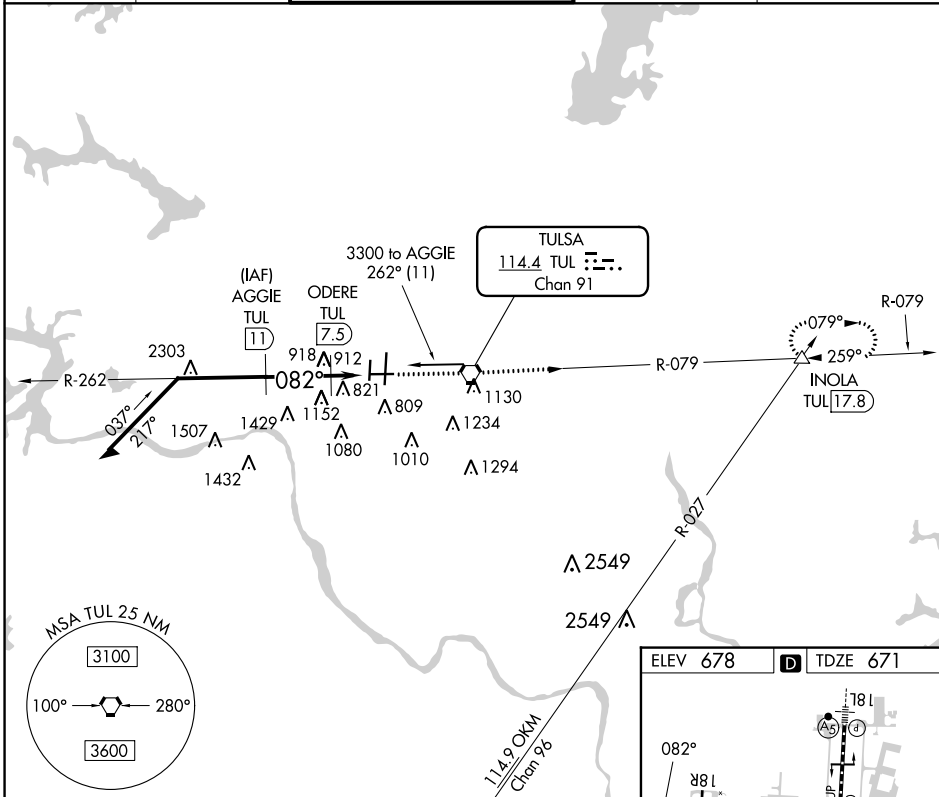
VOR/DME RWY 8

TULSA INTL (TUL)

ASR Circling NA for Cat E south of Rwy 8-26. Helicopter visibility reduction below ¼ SM NA. Autopilot coupled approach NA.

MISSED APPROACH: Climb to 3500 direct TUL VORTAC then via TUL R-079 to INOLA INT/TUL 17.8 DME and hold.

D-ATIS 124.9 377.2	TULSA APP CON 124.0 338.3	TULSA TOWER 121.2 310.8 (Rwys 18L-36R, 8-26) 118.7 257.8 (Rwy 18R-36L)	GND CON 121.9 348.6	CLNC DEL 134.05 284.7
------------------------------	-------------------------------------	--	-------------------------------	---------------------------------



CATEGORY	A	B	C	D	E
S-8	1080-1	409 (500-1)	1080-1¼ 409 (500-1¼)		1080-1½ 409 (500-1½)
CIRCLING	1120-1 442 (500-1)	1160-1 482 (500-1)	1520-2½ 842 (900-2½)	1520-2¾ 842 (900-2¾)	1520-3 842 (900-3)

TDZ/CL Rwy 36R
HIRL Rwys 8-26, 18L-36R and 18R-36L
REIL Rwys 8, 18R and 36L

SC-1, 26 DEC 2024 to 23 JAN 2025

SC-1, 26 DEC 2024 to 23 JAN 2025