

HI-ILS or LOC Z RWY 18L

LOC I-VAD 109.3	APCH CRS 183°	Rwy ldg TDZE Arpt Elev 9300 233 233
---------------------------	-------------------------	---

[USAF]

MOODY AFB (KVAD)

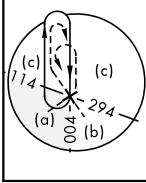
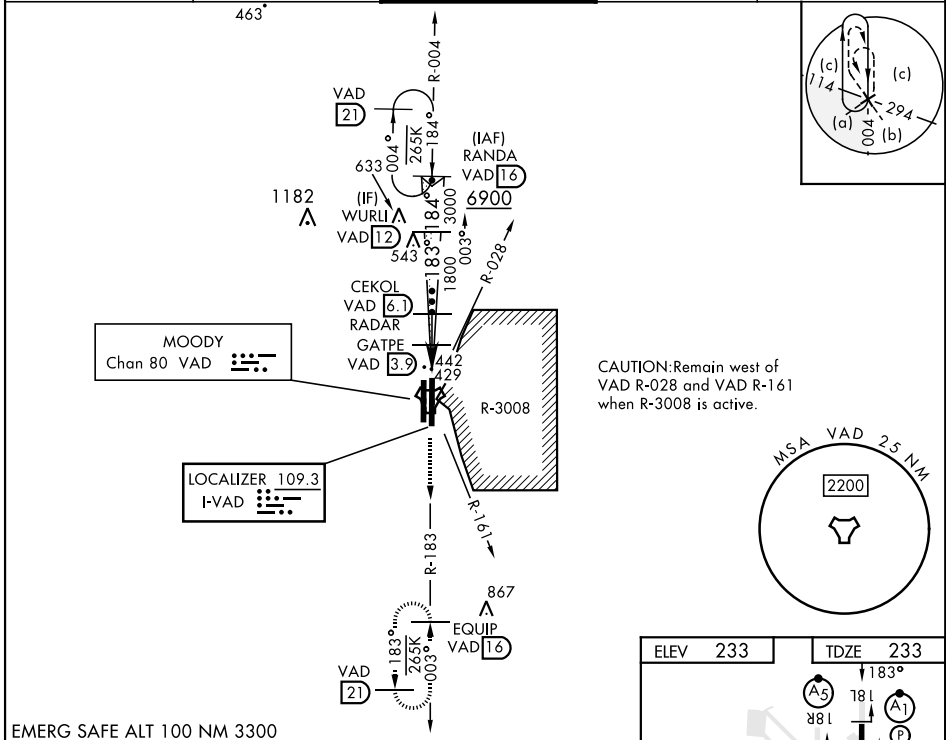
RADAR or DME required

▼ * When ALS inop, increase RVR to 40 and vis to 3/4 mile.
** When ALS inop, increase vis to 1 1/8 miles.

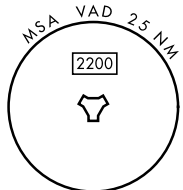


MISSED APPROACH: Climb to 3000 on VAD TACAN R-183 to EQUIP and hold.

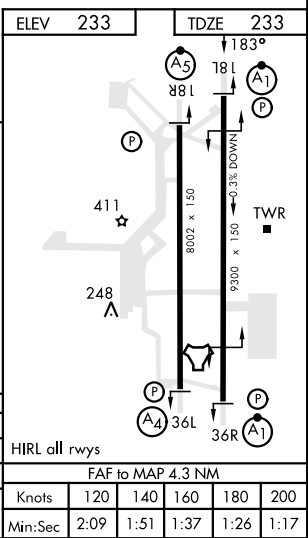
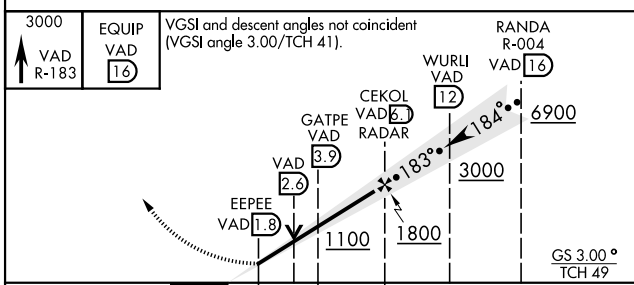
ATIS ★ 273.5	VALDOSTA APP CON 126.6 285.6	TOWER ★ 128.45 (CTAF) 257.625	GND CON 138.95 275.8	CLNC DEL 120.625 296.7
------------------------	--	--	--------------------------------	----------------------------------



CAUTION: Remain west of VAD R-028 and VAD R-161 when R-3008 is active.



EMERG SAFE ALT 100 NM 3300



CATEGORY	C	D	E
S-ILS 18L*	433/24	200	(200-1/2)
S-LOC 18L**	680/45	447	(500-7/8)
CIRCLING	760-1 1/2 527 (600-1 1/2)	800-2	567 (600-2)

HI-ILS or LOC Z RWY 18L

SE-4, 26 DEC 2024 to 23 JAN 2025

SE-4, 26 DEC 2024 to 23 JAN 2025