

# HI-TACAN Z RWY 18R

TACAN VAD Chan <b>80</b>	APCH CRS <b>180°</b>	Rwy ldg TDZE Arprt Elev	<b>8002</b> <b>231</b> <b>233</b>
-----------------------------	-------------------------	-------------------------------	---

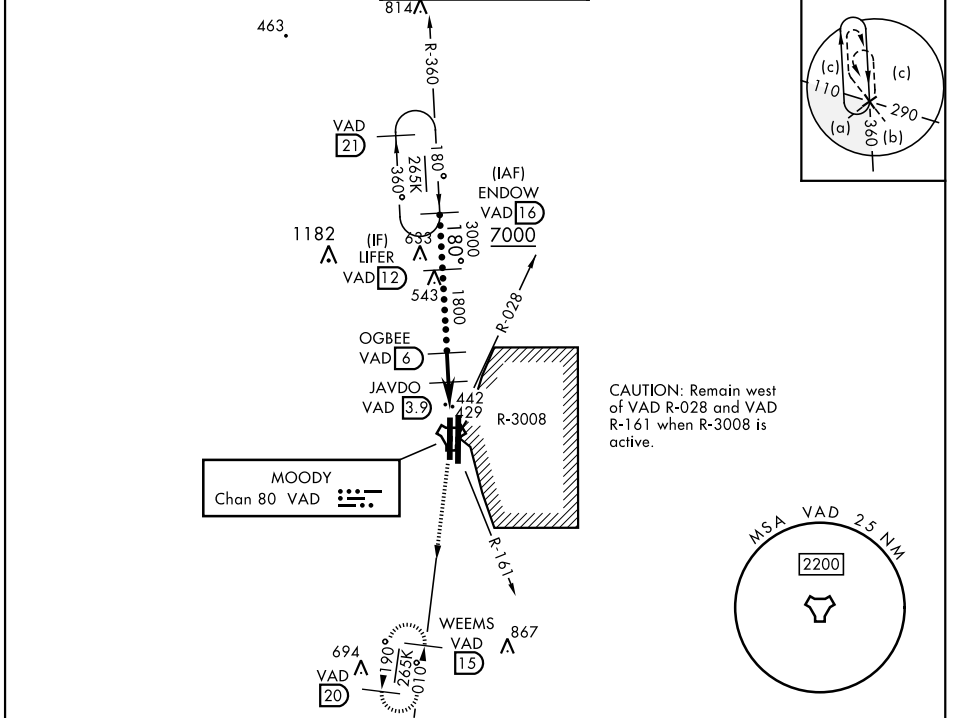
USAF]

MOODY AFB (KVAD)


\* When ALS inop, increase vis to 1½ miles.

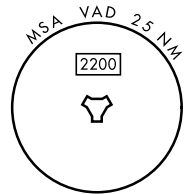
MALSR  MISSED APPROACH: Climb to 3000 on VAD TACAN R-190 to WEEMS and hold.

ATIS ★ <b>273.5</b>	VALDOSTA APP CON <b>126.6 285.6</b>	TOWER ★ <b>128.45 (CTAF) 257.625</b>	GND CON <b>138.95 275.8</b>	CLNC DEL <b>120.625 296.7</b>
------------------------	--	---	--------------------------------	----------------------------------

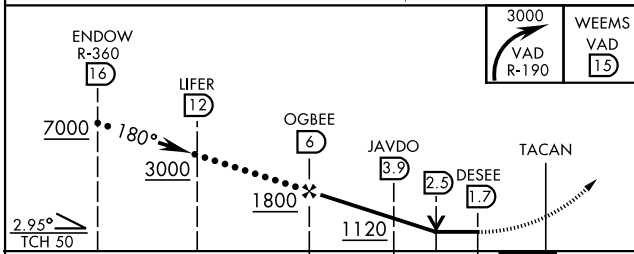


CAUTION: Remain west of VAD R-028 and VAD R-161 when R-3008 is active.

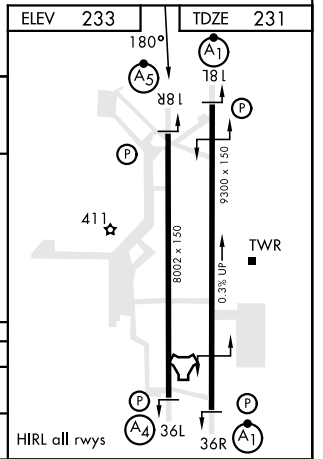
MOODY  
Chan 80 VAD 



EMERG SAFE ALT 100 NM 3300



CATEGORY	C	D	E
S-18R *	700/50	469 (500-1)	
CIRCLING	760-1½ 527 (600-1½)	800-2	567 (600-2)



# HI-TACAN Z RWY 18R

SE-4, 26 DEC 2024 to 23 JAN 2025

SE-4, 26 DEC 2024 to 23 JAN 2025