

VALDOSTA, GEORGIA

# RNAV (GPS) RWY 18L

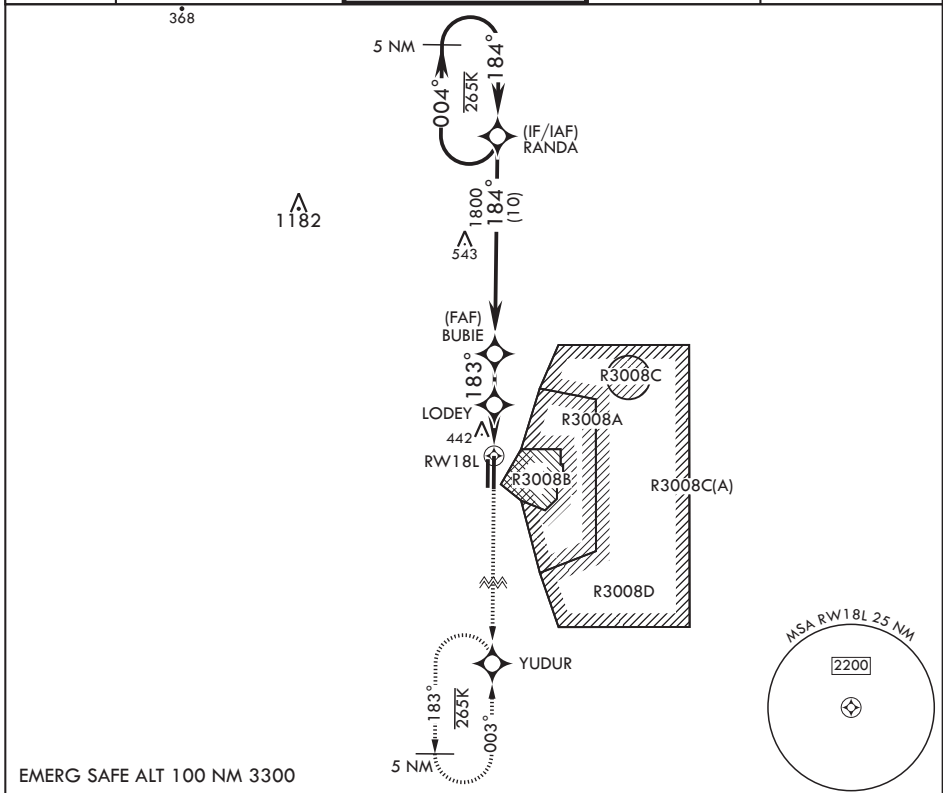
APCH CRS <b>183°</b>	Rwy Idg <b>9300</b>
	TDZE <b>233</b>
	Arprt Elev <b>233</b>

(USAF)

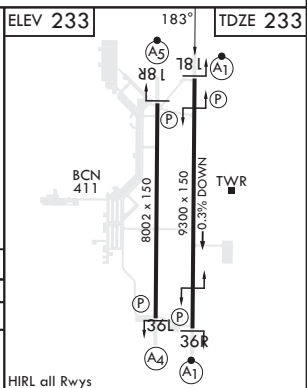
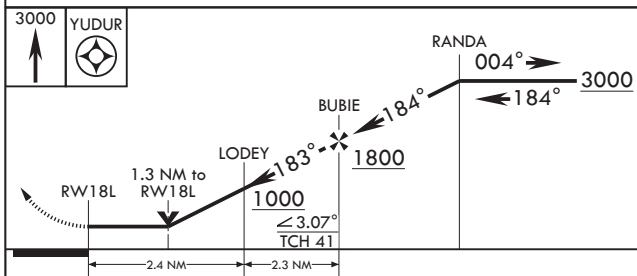
MOODY AFB (KVAD)

RNP APCH-GPS	ALSF-1	MISSED APPROACH: Climb to 3000 direct YUDUR and hold.
▼ * When ALS inop, increase CAT AB RVR to 55 and vis to 1 mile, CAT CDE vis to 1 3/8 miles.		

ATIS★ <b>273.5</b>	VALDOSTA APP CON <b>126.6 285.6</b>	TOWER★ <b>128.45 (CTAF) 257.625</b>	GND CON <b>138.95 275.8</b>	CLNC DEL <b>120.625 296.7</b>
-----------------------	--	--	--------------------------------	----------------------------------



EMERG SAFE ALT 100 NM 3300



CATEGORY	A	B	C	D	E
LNAV MDA*	700/24	467 (500-½)	700/50	467	(500-1)
CIRCLING	760-1	527 (600-1)	760-1½ 527 (600-1½)	800-2	567 (600-2)

VALDOSTA, GEORGIA  
Amdt 2 25JAN24

30°58'N - 83°12'W

MOODY AFB (KVAD)

# RNAV (GPS) RWY 18L

SE-4, 26 DEC 2024 to 23 JAN 2025

SE-4, 26 DEC 2024 to 23 JAN 2025