

VALDOSTA, GEORGIA

RNAV (GPS) RWY 36L

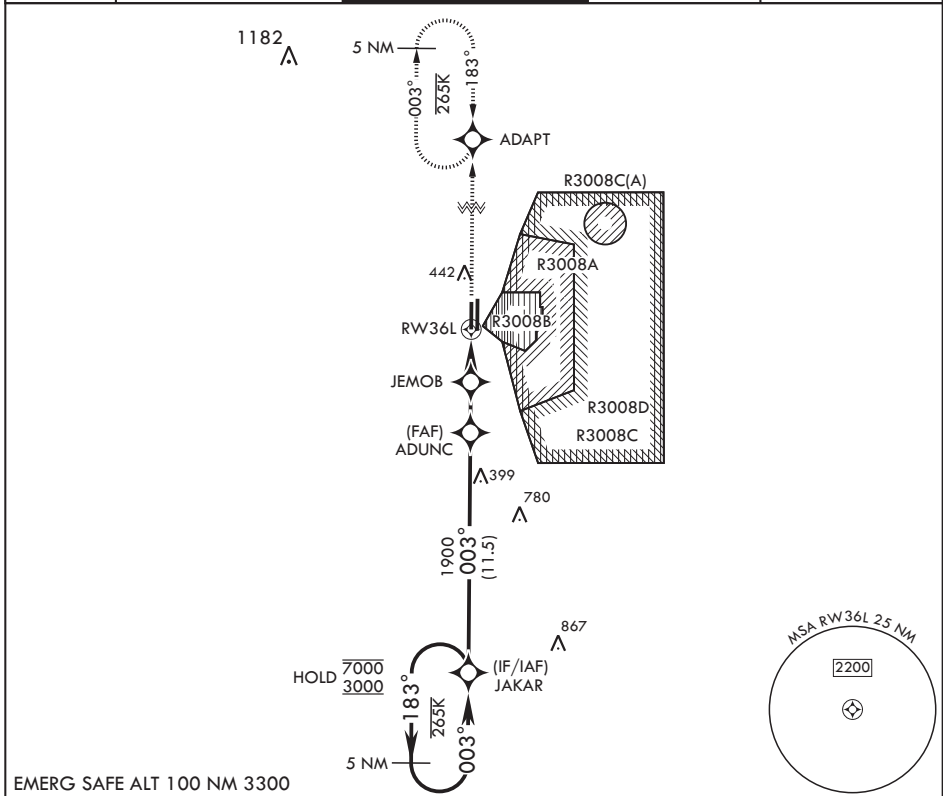
APCH CRS	Rwy Idg	8002
003°	TDZE	225
	Arprt Elev	233

- (USAF)

MOODY AFB (KVAD)

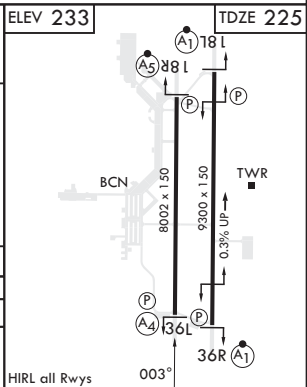
RNP APCH-GPS	MALS (A4)	MISSED APPROACH: Climb to 3000 direct ADAPT and hold.
<p>▼ * When ALS inop, increase CAT AB RVR to 55, vis to 1 mile; CAT CDE vis to 1 1/4 miles.</p>		

ATIS ★ 273.5	VALDOSTA APP CON 126.6 285.6	TOWER ★ 128.45 (CTAF) 257.625	GND CON 138.95 275.8	CLNC DEL 120.625 296.7
-----------------	---------------------------------	----------------------------------	-------------------------	---------------------------



EMERG SAFE ALT 100 NM 3300

	JAKAR	ADAPT	ELEV 233	TDZE 225	
	7000 ← 183°	ADAPT	3000		
	3000 → 003°				
	JAKAR	ADUNC			
	1900	JEMOB			
	1100	1.3 NM to RW36L			
	3.10° TCH 50	2.4 NM			
		2.5 NM			
CATEGORY	A	B	C	D	E
LNAV MDA*	660/40	435 (500-¾)	660/50	435	(500-1)
CIRCLING	760-1	527 (600-1)	760-1½ 527 (600-1½)	800-2	567 (600-2)



VALDOSTA, GEORGIA

30°58'N - 83°12'W

MOODY AFB (KVAD)

Amdt 1 25JAN24

RNAV (GPS) RWY 36L

SE-4, 26 DEC 2024 to 23 JAN 2025

SE-4, 26 DEC 2024 to 23 JAN 2025