

TACAN Y RWY 18L

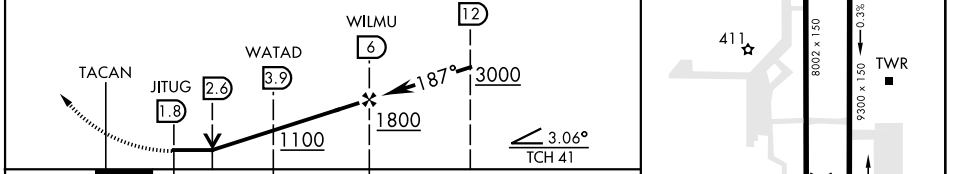
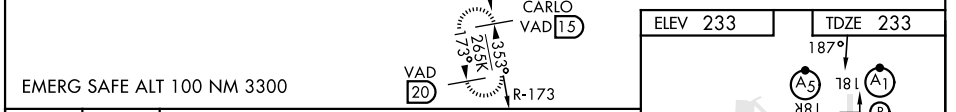
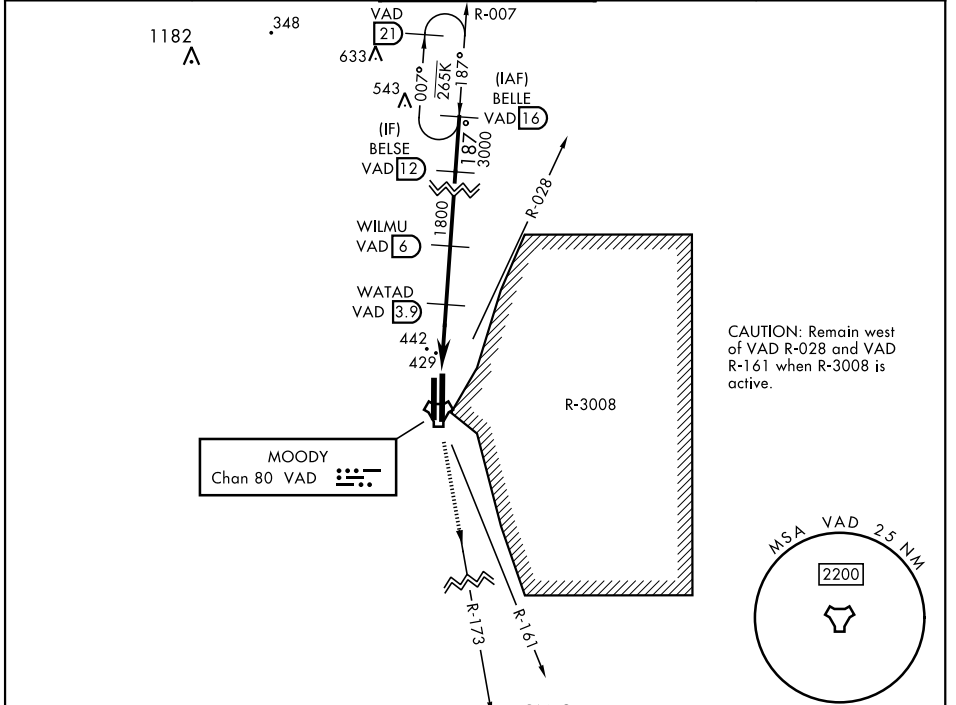
TACAN VAD Chan 80	APCH CRS 187°	Rwy Idg 9300 TDZE 233 Arprt Elev 233	[USAF]	MOODY AFB (KVAD)
----------------------	------------------	---	--------	------------------

▼ *When ALS inop, increase CAT AB RVR to 55 and vis to 1 mile, CAT CDE vis to 1 3/8 miles.

ALS-F1 (A1)

MISSED APPROACH: Climb to 3000 on VAD TACAN R-173 to CARLO and hold.

ATIS ★ 273.5	VALDOSTA APP CON 126.6 285.6	TOWER ★ 128.45 (CTAF) 257.625	GND CON 138.95 275.8	CLNC DEL 120.625 296.7
-----------------	---------------------------------	----------------------------------	-------------------------	---------------------------



CATEGORY	A	B	C	D	E
S-18L *	700/24 467 (500-1/2)		700/50 467 (500-1)		
CIRCLING	760-1 527 (600-1)		760-1 1/2 527 (600-1 1/2)	800-2 567 (600-2)	

HIRL all rwys

VALDOSTA, GEORGIA 30°58'N-83°12'W MOODY AFB (KVAD)

Amdt 6 25JAN24 **TACAN Y RWY 18L**

SE-4, 26 DEC 2024 to 23 JAN 2025

SE-4, 26 DEC 2024 to 23 JAN 2025