

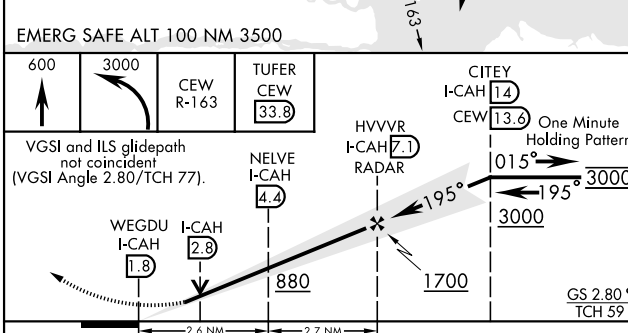
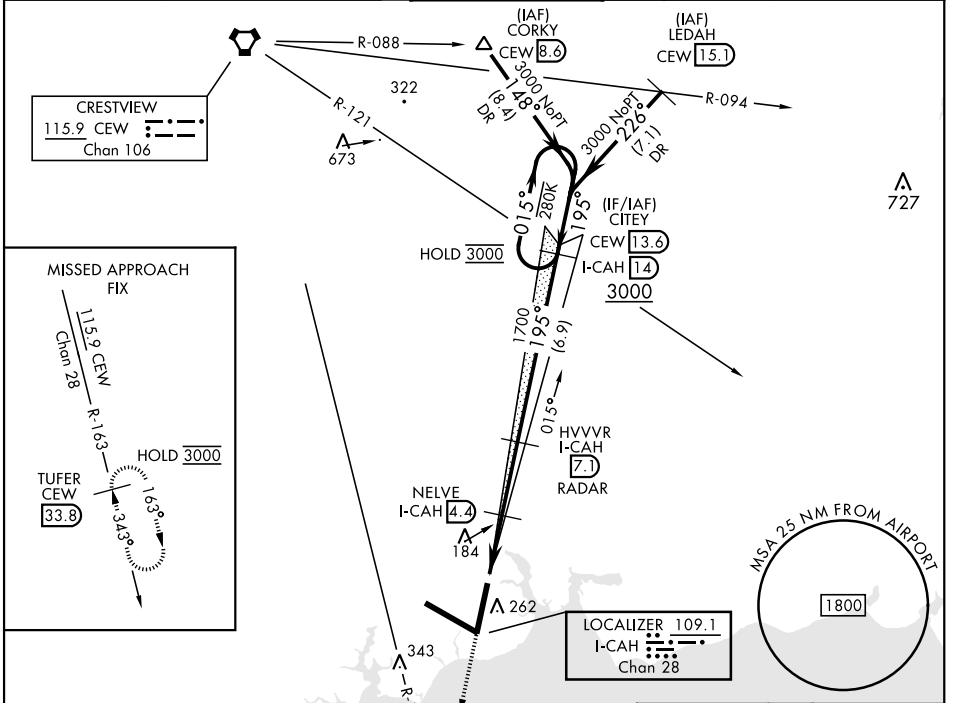
VALPARAISO DESTIN FT WALTON BEACH, FLORIDA

ILS or LOC Z RWY 20

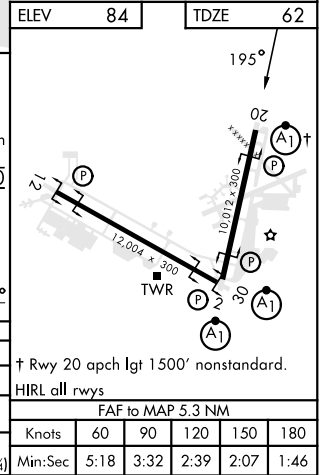
LOC/DME I-CAH 109.1 Chan 28	APCH CRS 195°	Rwy Idg 10,012 TDZE 62 Arprt Elev 84
---	-------------------------	---

[USAF] EGLIN AFB DESTIN FORT WALTON BEACH (KVPS)

DME required		ALSF-1	MISSED APPROACH: Climb to 600, then climbing left turn to 3000 on CEW VORTAC R-163 to TUFER/33.8 DME and hold.	
* When ALS inop increase RVR to 40, vis to 3/4 mile. ** When ALS inop increase RVR to 55, vis to 1 mile.				
ATIS ★ 134.625 273.5	APP CON 125.1 281.45 271°-089° 132.1 360.6 090°-270°	TOWER 118.2 353.65	GND CON 121.8 335.8	CLNC DEL 127.7 377.2



EMERG SAFE ALT 100 NM 3500	600	3000	CEW R-163	TUFER CEW 33.8	CITEY I-CAH 14	HVVVR I-CAH 7.1	NELVE I-CAH 4.4	WEGDU I-CAH 1.8	I-CAH 2.8	I-CAH 4.4	I-CAH 7.1	I-CAH 14
VGSI and ILS glidepath not coincident (VGSI Angle 2.80/TCH 77).												
GS 2.80° TCH 59'												
2.6 NM 2.7 NM												
CATEGORY	A	B	C	D	E							
S-ILS 20 *	262/24		200	(200-1/2)								
S-LOC 20 **	440/24	378	(400-1/2)		440/35	378	(400-3/4)					
CIRCLING	600-1	516	(600-1)		680-1 1/2	680-2	700-2 1/4					
			596	(600-1 1/2)		596	(600-2)		616	(700-2 1/4)		



VALPARAISO DESTIN FT WALTON BEACH, FLORIDA EGLIN AFB DESTIN FORT WALTON BEACH (KVPS)
 Orig 16MAY24 30°29'N-86°32'W

ILS or LOC Z RWY 20

SE-3, 26 DEC 2024 to 23 JAN 2025

SE-3, 26 DEC 2024 to 23 JAN 2025

† Rwy 20 apch lgt 1500' nonstandard. HIRL all rwys	FAF to MAP 5.3 NM				
Knots	60	90	120	150	180
Min:Sec	5:18	3:32	2:39	2:07	1:46