

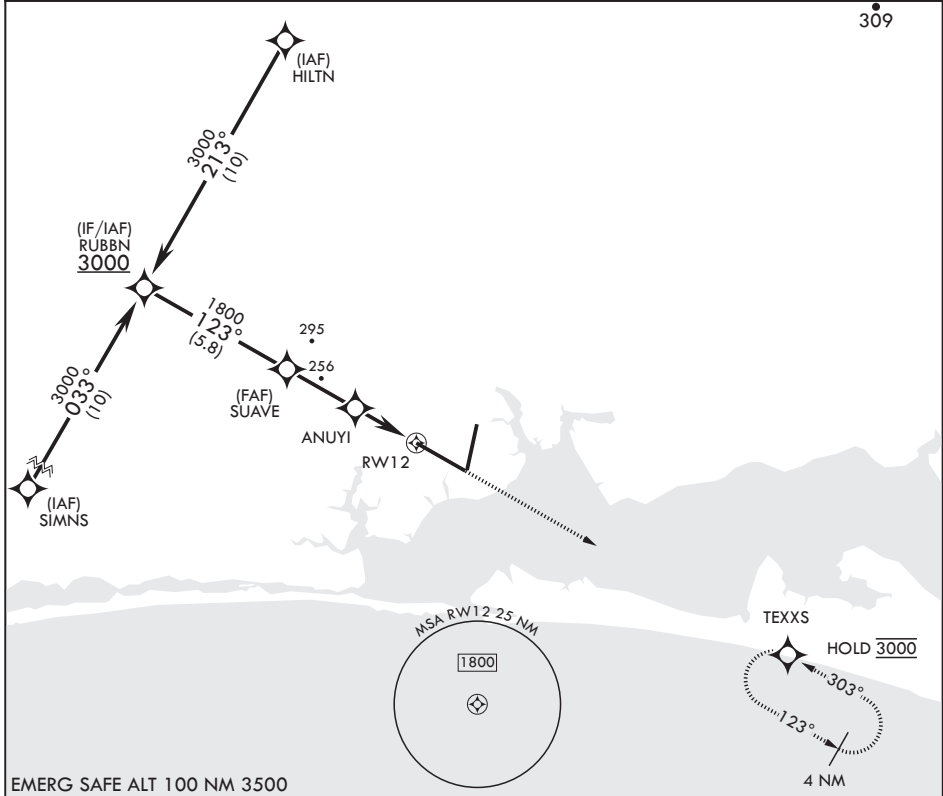
# RNAV (GPS) RWY 12

- (USAF) EGLIN AFB DESTIN FORT WALTON BEACH (KVPS)

APCH CRS	Rwy Idg	12,004
123°	TDZE	84
	Arprt Elev	84

RNP APCH - GPS MISSED APPROACH: Climb to 3000 direct TEXXS and hold.

ATIS* 134.625 273.5	APP CON/DEP CON 125.1 281.45 271°-089° 132.1 360.6 090°-270°	TOWER 118.2 353.65	GND CON 121.8 335.8	CLNC DEL 127.7 377.2
------------------------	--	-----------------------	------------------------	-------------------------



EMERG SAFE ALT 100 NM 3500

RUBBN		SUAVE		ANUYI		RWY 12	
3000		1800		920		ELEV 84	
123°		3.00° ≥ TCH 50		1.2 NM to RWY 12		TDZE 84	
2.8 NM		2.5 NM		12,004 x 300		0.3% DOWN	
CATEGORY		A		B		C	
LNAV MDA		520/55 436 (500-1)		520-1½ 436 (500-1½)		700-2¼ 616 (700-2¼)	
CIRCLING		600-1 516 (600-1)		680-1½ 596 (600-1½)		680-2 596 (600-2)	

HIRL all Rwys † Rwy 20 apch lgt 1500' nonstandard.

SE-3, 26 DEC 2024 to 23 JAN 2025

SE-3, 26 DEC 2024 to 23 JAN 2025

# RNAV (GPS) RWY 12