

TACAN RWY 30

TACAN DWG Chan 2	APCH CRS 322°	Rwy ldg 12,004 TDZE 68 Arprt Elev 84
---------------------	------------------	--

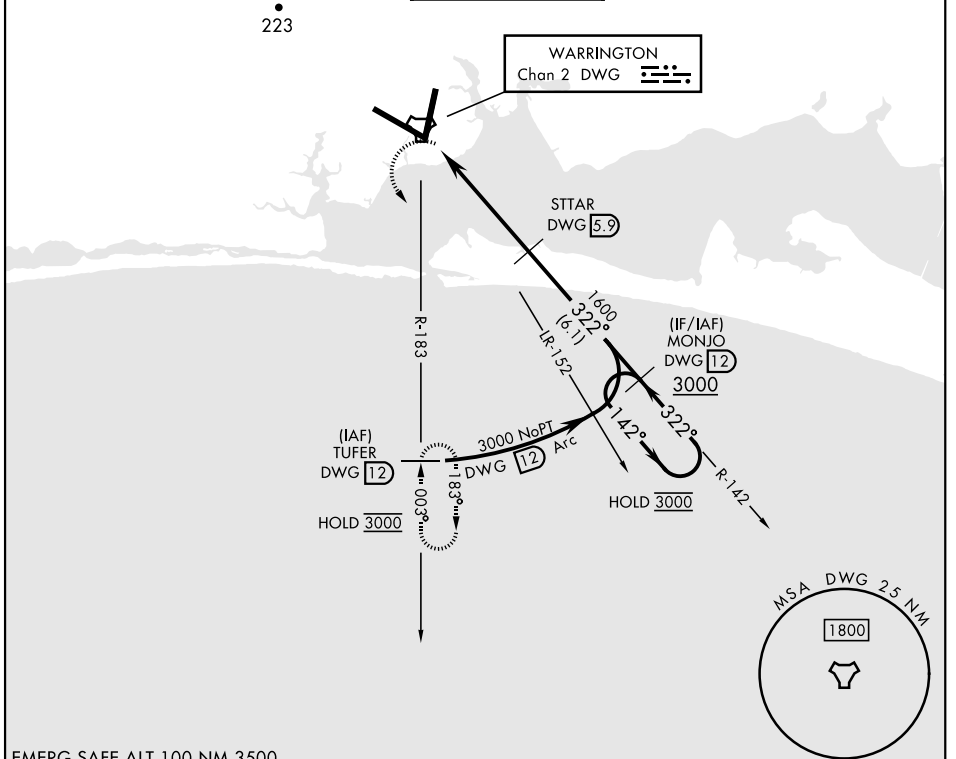
[USAF] EGLIN AFB DESTIN FORT WALTON BEACH (KVPS)

* When ALS inop, increase CAT AB RVR to 55 vis to 1 mile; CAT CDE vis to 1 $\frac{1}{2}$ miles.



MISSED APPROACH: Climbing left turn to 3000 and intercept DWG TACAN R-183 direct TUFER/12 DME and hold.

ATIS * 134.625 273.5	APP CON 125.1 281.45 271°-089° 132.1 360.6 090°-270°	TOWER 118.2 353.65	GND CON 121.8 335.8	CLNC DEL 127.7 377.2
-------------------------	--	-----------------------	------------------------	-------------------------

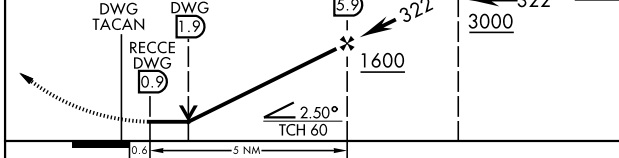


EMERG SAFE ALT 100 NM 3500



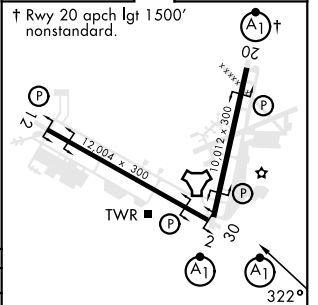
TUFER DWG 12

VGSI and descent angles not coincident (VGSI Angle 2.50/TCH 80).



ELEV 84	TDZE 68
---------	---------

† Rwy 20 apch lgt 1500' nonstandard.



CATEGORY	A	B	C	D	E
S-30 *	540/24 472 (500-1/2)		540/50 472 (500-1)		
CIRCLING	600-1 516 (600-1)		680-1 1/2 596 (600-1 1/2)	680-2 596 (600-2)	700-2 1/4 616 (700-2 1/4)

HIRL all rwys

TACAN RWY 30

SE-3, 26 DEC 2024 to 23 JAN 2025

SE-3, 26 DEC 2024 to 23 JAN 2025