

WAAS CH <b>56520</b> <b>W14A</b>	APP CRS <b>142°</b>	Rwy Idg TDZE Apt Elev	<b>5103</b> <b>513</b> <b>516</b>
--	------------------------	-----------------------------	---

# RNAV (GPS) RWY 14

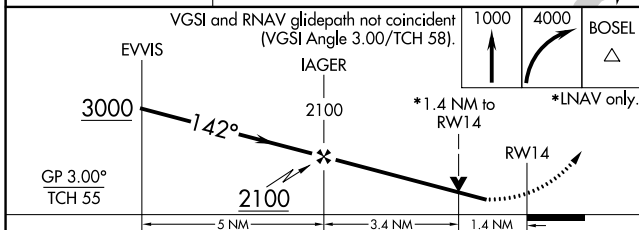
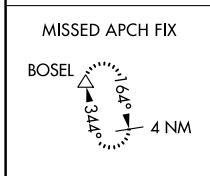
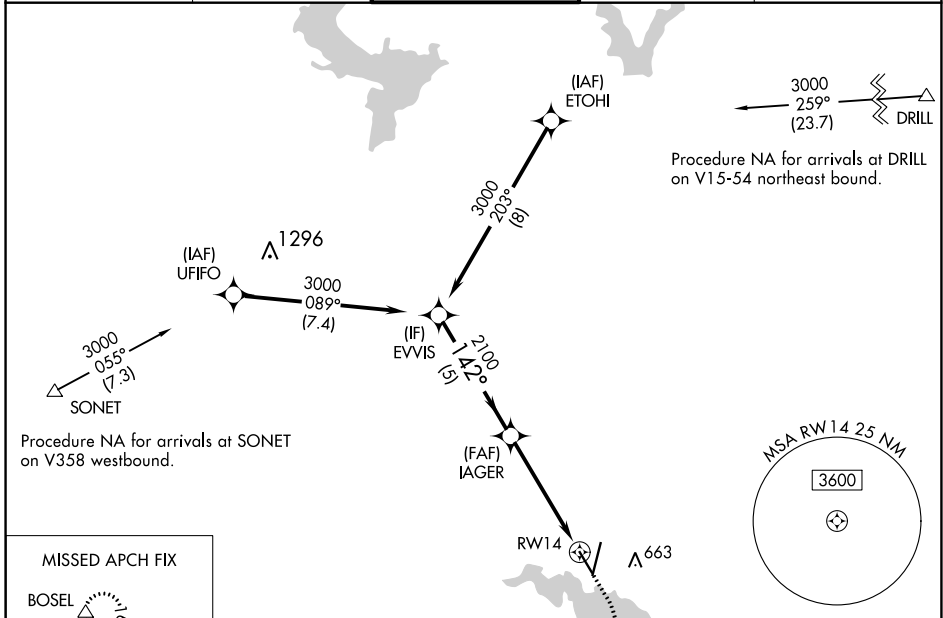
WACO RGNL (ACT)

RNP APCH.

**ASR** Rwy 14 helicopter visibility reduction below  $\frac{3}{4}$  SM NA. For uncompensated Baro-VNAV systems, procedure NA below -8°C or above 54°C.

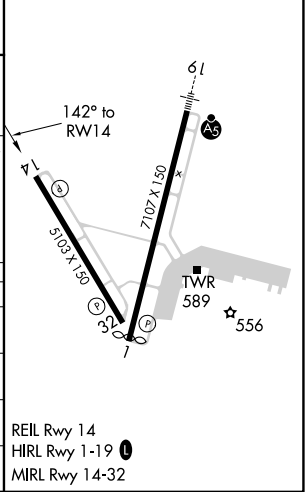
MISSED APPROACH: Climb to 1000 then climbing right turn to 4000 direct BOSEL and hold, continue climb-in-hold to 4000.

ATIS <b>123.85</b>	WACO APP CON * <b>127.65 227.125</b>	WACO TOWER * <b>119.3 (CTAF) 0 257.8</b>	GND CON <b>121.9</b>	UNICOM <b>122.95</b>
-----------------------	---	---	-------------------------	-------------------------



CATEGORY	A	B	C	D
LPV DA		763- $\frac{3}{4}$	250 (300- $\frac{3}{4}$ )	
LNAV/VNAV DA		763- $\frac{3}{4}$	250 (300- $\frac{3}{4}$ )	
LNAV MDA	1020-1	507 (600-1)	1020-1 $\frac{3}{8}$	507 (600-1 $\frac{3}{8}$ )
<b>C</b> CIRCLING	1020-1	504 (600-1)	1020-1 $\frac{1}{2}$ 504 (600-1 $\frac{1}{2}$ )	1160-2 644 (700-2)

ELEV 516	<b>D</b> TDZE 513
----------	-------------------



SC-3, 26 DEC 2024 to 23 JAN 2025

SC-3, 26 DEC 2024 to 23 JAN 2025