

VORTAC ACT 115.3 Chan 100	APP CRS 321°	Rwy Idg TDZE Apt Elev	5103 516 516
----------------------------------------	------------------------	-----------------------------	-----------------------------------------

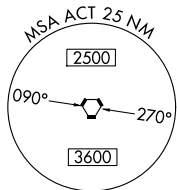
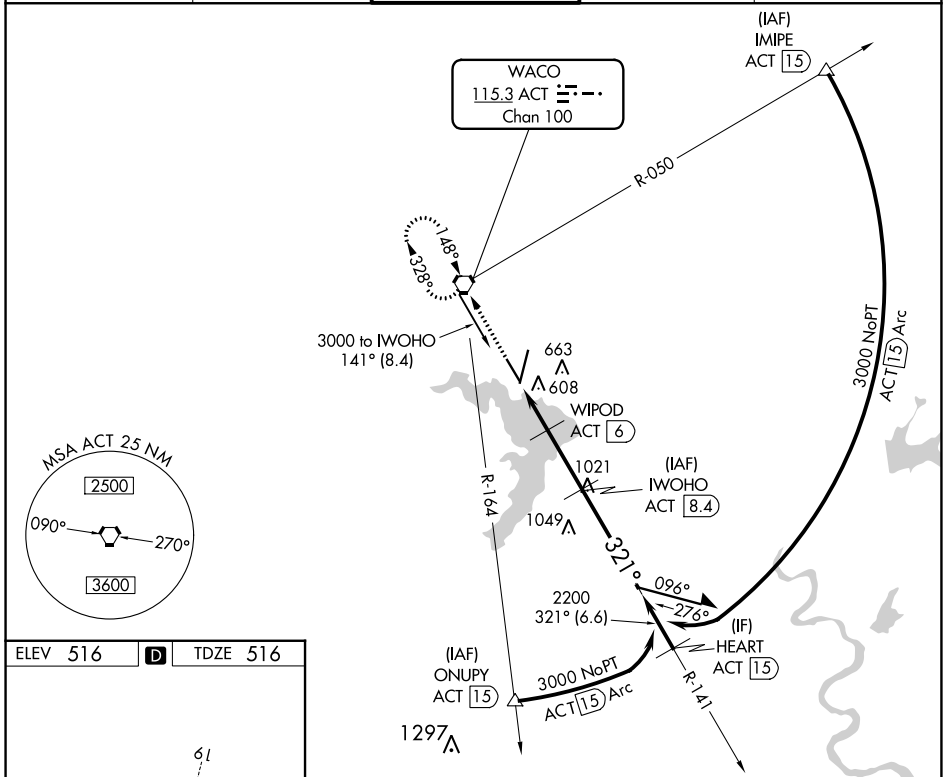
VOR/DME RWY 32

WACO RGNL (ACT)

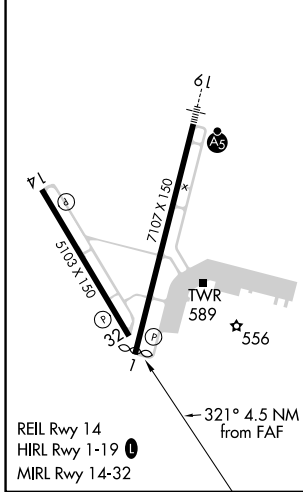
ASR VDP NA with Mc Gregor Exec altimeter setting. When local altimeter setting not received use Mc Gregor Exec altimeter setting and increase all MDA 40 feet; increase S-32 Cats C/D visibility 1/8 mile and Circling Cat D visibility 1/4 mile.

MISSED APPROACH: Climb to 3000 direct ACT VORTAC and hold, continue climb-in-hold to 3000.

ATIS 123.85	WACO APP CON * 127.65 227.125	WACO TOWER * 119.3 (CTAF) 0 257.8	GND CON 121.9	UNICOM 122.95
-----------------------	-----------------------------------------	---------------------------------------------	-------------------------	-------------------------



ELEV 516	D	TDZE 516
----------	----------	----------



3000 ACT	WACO ACT 115.3	WIPOD ACT 6	IWOHO ACT 8.4	Remain within 10 NM
3000	3000	2200	2200	3000
ACT 4	ACT 4.9	ACT 6	ACT 8.4	3000
1300	1300	2200	2200	3000
0.9	1.1	2.4		
CATEGORY	A	B	C	D
S-32	860-1 344 (400-1)			
C CIRCLING	940-1 424 (500-1)	980-1 464 (500-1)	1020-1½ 504 (600-1½)	1160-2 644 (700-2)

VGSI and descent angles not coincident (VGSI Angle 3.00/TCH 58).

SC-3, 26 DEC 2024 to 23 JAN 2025

SC-3, 26 DEC 2024 to 23 JAN 2025