

WARNER ROBINS, GEORGIA

# RNAV (GPS) RWY 15

APCH CRS	Rwy Idg	12,001
146°	TDZE	294
	Arprt Elev	294

(USAF)

ROBINS AFB (KWRB)

\* When ALS inop, increase CAT AB RVR to 55, vis to 1 mile, CAT CDE vis to 1 5/8 miles.  
 \*\* Circling NA SW of Rwy 15-33.



MISSED APPROACH: Climb to 2700 direct LETIC and hold.

ATIS 119.475 273.475	ATLANTA APP CON/DEP CON 124.2 279.6	TOWER 133.225 257.975	GND CON 121.85 275.8
-------------------------	--	--------------------------	-------------------------

DME/DME RNP-0.3 NA

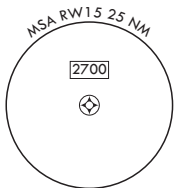
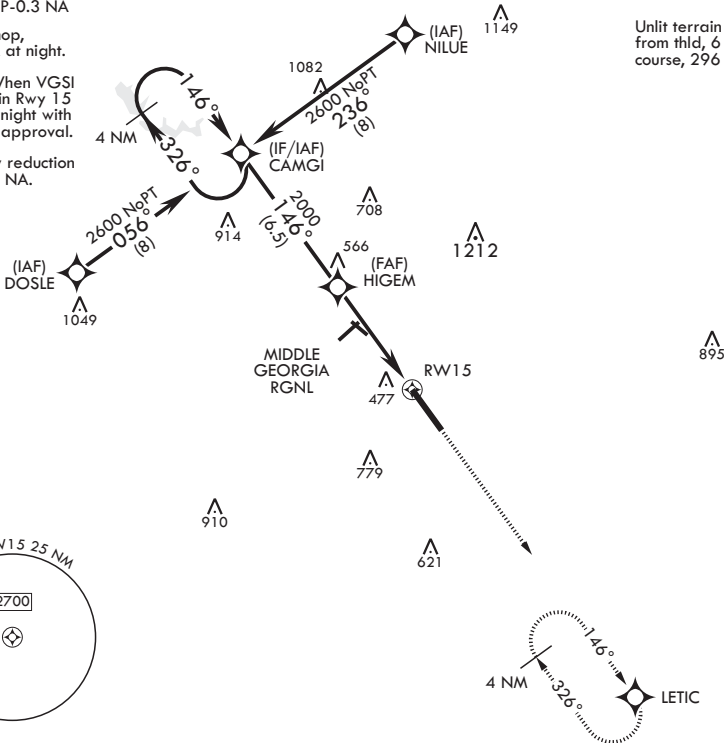
When VGSi inop, procedure NA at night.

USAF Only: When VGSi inop, straight-in Rwy 15 authorized at night with MAJCOM A3 approval.

RNAV visibility reduction by helicopters NA.

729

Unlit terrain 200 ft from thld, 6 ft right of course, 296 ft MSL.



EMERG SAFE ALT 100 NM 3700

4 NM Holding Pattern	CAMGI	VGSi and descent angle not coincident.	2700	LETIC	ELEV 294	TDZE 294	
2600	← 326°	→ 146°	↘ 146°	HIGEM	↘ 3.11°	↘ TCH 55	↘ RWY 15
			5 NM				
CATEGORY	A	B	C	D	E		
RNAV MDA*	860/50	566 (600-1)	860-1¼	566	(600-1¼)		
CIRCLING**	860-1	567 (600-1)	860-1¼ 567 (600-1¼)	960-2 667 (700-2)	1100-2¾ 807 (900-2¾)		

SE-4, 26 DEC 2024 to 23 JAN 2025

SE-4, 26 DEC 2024 to 23 JAN 2025

WARNER ROBINS, GEORGIA

32°38'N - 83°36'W

ROBINS AFB (KWRB)

Amdt 4 31JAN19

# RNAV (GPS) RWY 15