

# TACAN Y RWY 15

TACAN WRB Chan <b>10</b>	APCH CRS <b>143°</b>	Rwy Ldg <b>12,001</b> TDZE <b>294</b> Arprt Elev <b>294</b>
-----------------------------	-------------------------	-------------------------------------------------------------------

[USAF]

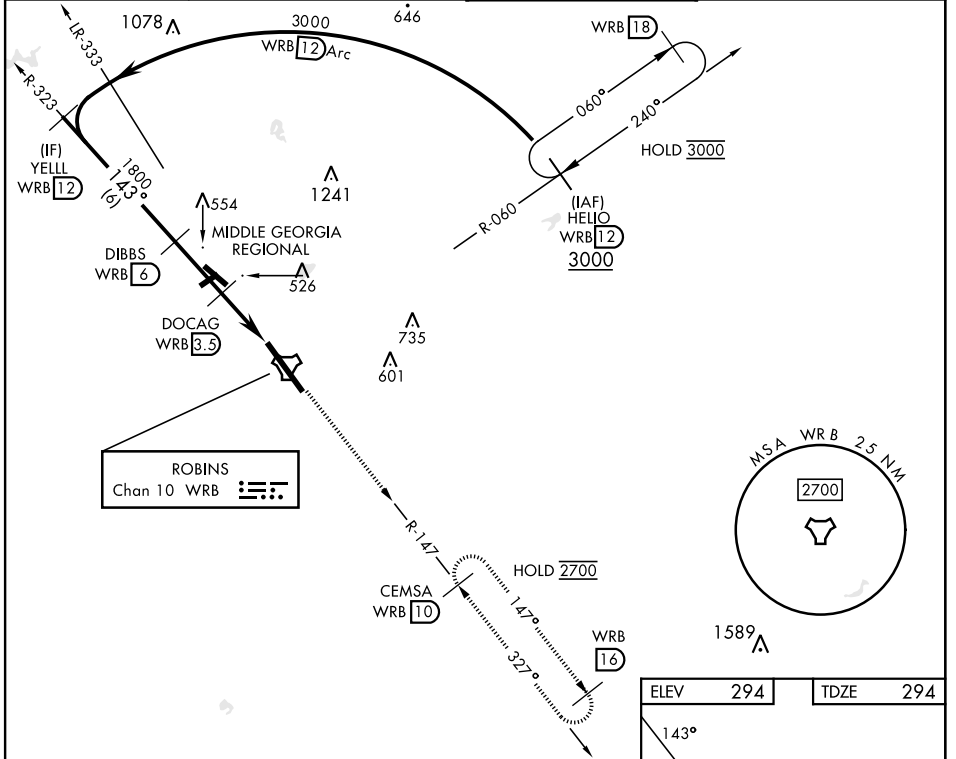
ROBINS AFB (KWRB)

\*When ALS inop, increase CAT AB RVR to 55, vis to 1 mile; CAT CDE vis to 1½ miles.  
 \*\*Circling not authorized SW of Rwy 15-33.

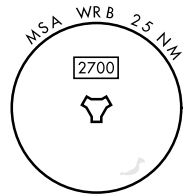


MISSED APPROACH: Climb To 2700 on WRB TACAN R-147 to CEMSA and hold.

ATIS <b>119.475 273.475</b>	ATLANTA APP CON <b>124.2 279.6</b>	TOWER <b>133.225 257.975</b>	GND CON <b>121.85 275.8</b>
--------------------------------	---------------------------------------	---------------------------------	--------------------------------

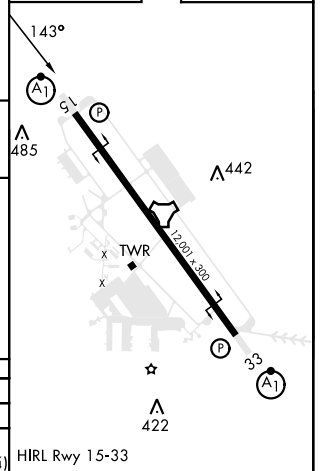
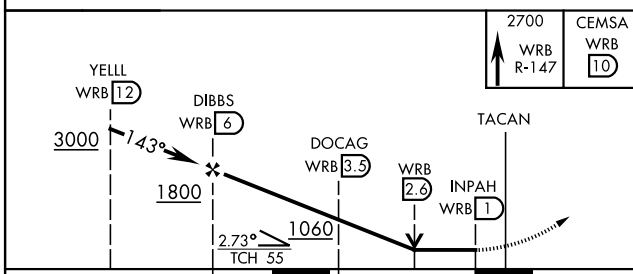


ROBINS  
Chan 10 WRB



ELEV 294	TDZE 294
----------	----------

EMERG SAFE ALT 100 NM 3700



CATEGORY	A	B	C	D	E
S-15*	820/24	526 (600-½)	820/55	526 (600-1)	
CIRCLING**	820-1	526 (600-1)	880-1½ 586 (600-1½)	960-2 666 (700-2)	1040-2¾ 746 (800-2¾)

HIRL Rwy 15-33

# TACAN Y RWY 15

SE-4, 26 DEC 2024 to 23 JAN 2025

SE-4, 26 DEC 2024 to 23 JAN 2025