

D-ATIS
 132.65
 WASHINGTON TOWER
 119.1 257.6
 134.35 (HELICOPTERS)
 GND CON
 121.7 257.6
 CLNC DEL
 128.25
 CPDLC
 PDC
D

CAUTION: BE ALERT TO RUNWAY CROSSING CLEARANCES.
 READBACK OF ALL RUNWAY HOLDING INSTRUCTIONS IS REQUIRED.

FIELD
 ELEV
 14

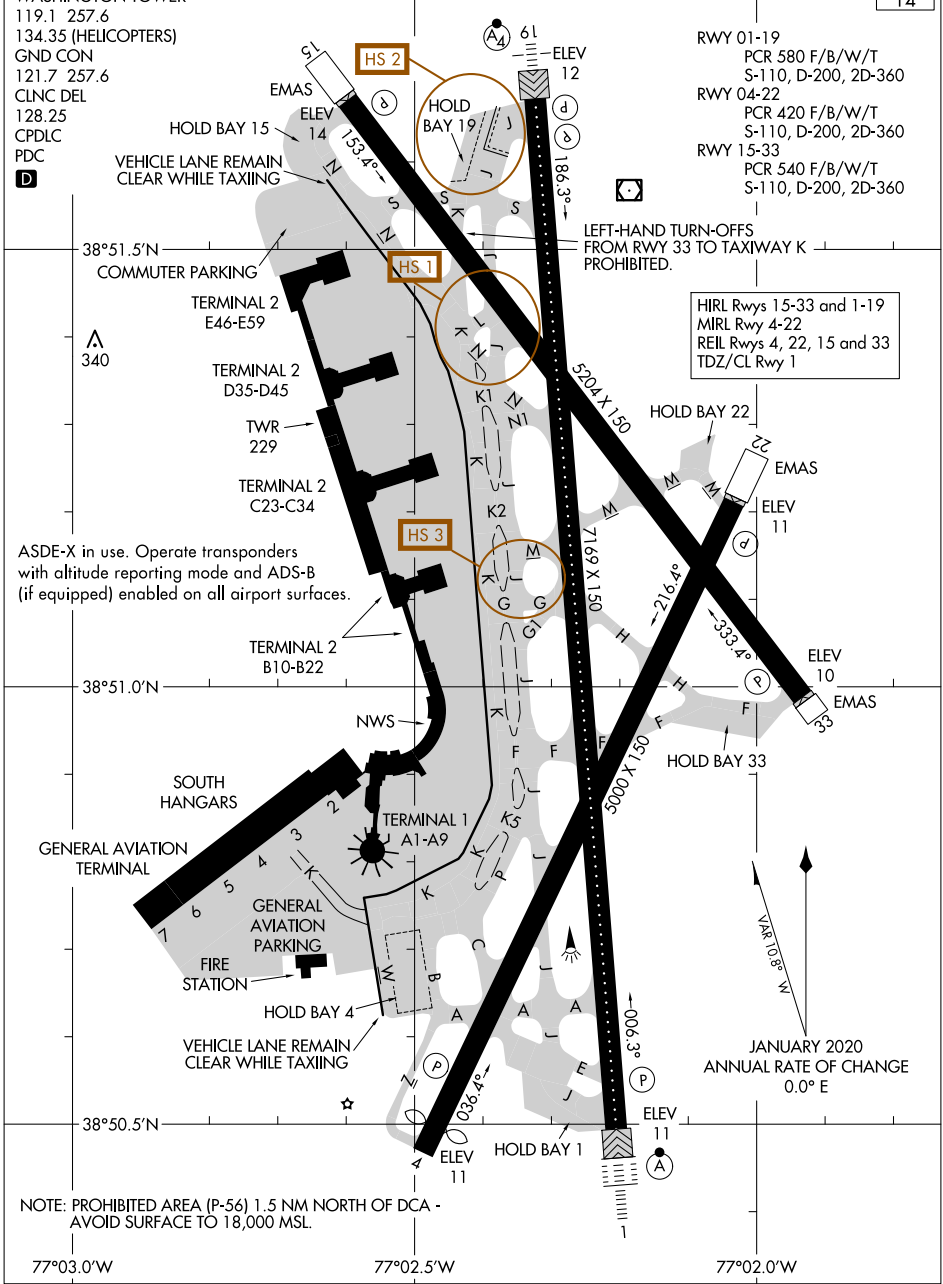
RWY 01-19
 PCR 580 F/B/W/T
 S-110, D-200, 2D-360
 RWY 04-22
 PCR 420 F/B/W/T
 S-110, D-200, 2D-360
 RWY 15-33
 PCR 540 F/B/W/T
 S-110, D-200, 2D-360

LEFT-HAND TURN-OFFS
 FROM RWY 33 TO TAXIWAY K
 PROHIBITED.

HIRL Rwy 15-33 and 1-19
 MIRL Rwy 4-22
 REIL Rwy 4, 22, 15 and 33
 TDZ/CL Rwy 1

ASDE-X in use. Operate transponders
 with altitude reporting mode and ADS-B
 (if equipped) enabled on all airport surfaces.

NOTE: PROHIBITED AREA (P-56) 1.5 NM NORTH OF DCA -
 AVOID SURFACE TO 18,000 MSL.



NE-3, 26 DEC 2024 to 23 JAN 2025

NE-3, 26 DEC 2024 to 23 JAN 2025