

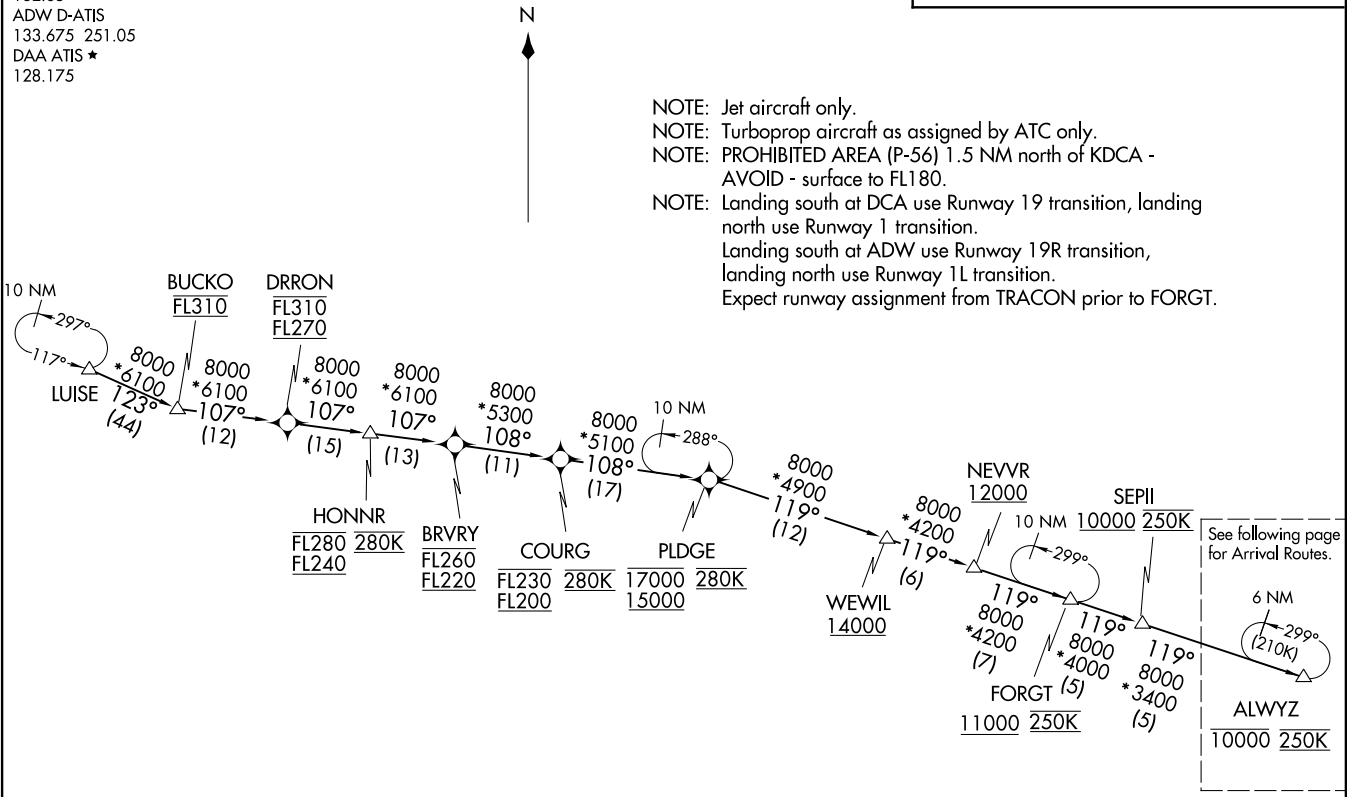
FRDMM SIX ARRIVAL (RNAV) Transition Routes  
 (ALWYZ.FRDMM6) 16MAY24 WASHINGTON, DC

POTOMAC APP CON  
 118.675 323.175  
 DCA D-ATIS  
 132.65  
 ADW D-ATIS  
 133.675 251.05  
 DAA ATIS ★  
 128.175

RNAV-1 DME/DME/IRU or GPS.  
 RADAR required.

BUCKO TRANSITION (BUCKO.FRDMM6):  
 LUISE TRANSITION (LUISE.FRDMM6):

NOTE: Jet aircraft only.  
 NOTE: Turboprop aircraft as assigned by ATC only.  
 NOTE: PROHIBITED AREA (P-56) 1.5 NM north of KDCA - AVOID - surface to FL180.  
 NOTE: Landing south at DCA use Runway 19 transition, landing north use Runway 1 transition.  
 Landing south at ADW use Runway 19R transition, landing north use Runway 1L transition.  
 Expect runway assignment from TRACON prior to FORGT.



(CONTINUED ON FOLLOWING PAGE)

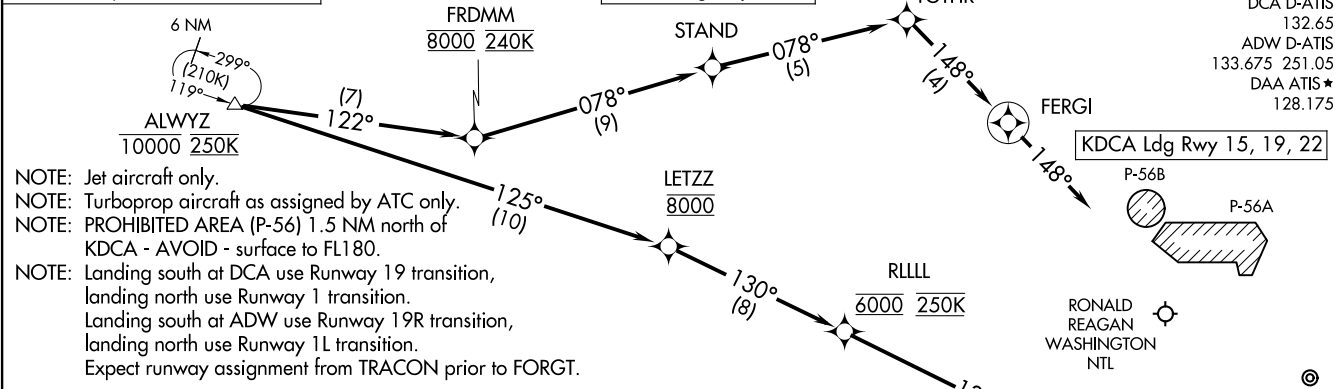
NOTE: Chart not to scale.

(ALWYZ.FRDMM6) 24137 AL-443 (FAA)  
 FRDMM SIX ARRIVAL (RNAV) Transition Routes WASHINGTON, DC

FRDMM SIX ARRIVAL (RNAV) Arrival Routes  
 (ALWYZ,FRDMM6) 16MAY24

WASHINGTON, DC

RNAV-1 DME/DME/IRU or GPS.  
 RADAR required.



- NOTE: Jet aircraft only.
- NOTE: Turboprop aircraft as assigned by ATC only.
- NOTE: PROHIBITED AREA (P-56) 1.5 NM north of KDCA - AVOID - surface to FL180.
- NOTE: Landing south at DCA use Runway 19 transition, landing north use Runway 1 transition.
- NOTE: Landing south at ADW use Runway 19R transition, landing north use Runway 1L transition.
- NOTE: Expect runway assignment from TRACON prior to FORGT.

ARRIVAL ROUTE DESCRIPTION

**LANDING ADW RUNWAY 1L/R:** From ALWYZ on track 125° to cross LETZZ at 8000, then on track 130° to cross RLLLL at 6000 and at 250K, then on track 131° to VCTRY, then on track 189° to HEROO, then on track 189°. Expect RADAR vectors to final approach course.

**LANDING ADW RUNWAY 19L/R:** From ALWYZ on track 122° to cross FRDMM at 8000 and at 240K, then on track 078° to STAND. Expect RADAR vectors to final approach course.

**LANDING DCA RUNWAY 1, 4, 33:** From ALWYZ on track 125° to cross LETZZ at 8000, then on track 130° to cross RLLLL at 6000 and at 250K, then on track 131° to VCTRY, then on track 189° to HEROO, then on track 189°. Expect RADAR vectors to final approach course.

**LANDING DCA RUNWAY 15, 19, 22:** From ALWYZ on track 122° to cross FRDMM at 8000 and at 240K, then on track 078° to STAND, then on track 078° to TGTHR, then on track 148° to FERGI, then on track 148°. Expect RADAR vectors to final approach course.

**LANDING DAA:** From ALWYZ on track 125° to cross LETZZ at 8000, then on track 130° to cross RLLLL at 6000 and at 250K, then on track 131° to VCTRY, then on track 189° to HEROO, then on track 189°. Expect RADAR vectors to final approach course.

POTOMAC APP CON  
 118.675 323.175  
 DCA D-ATIS  
 132.65  
 ADW D-ATIS  
 133.675 251.05  
 DAA ATIS ★  
 128.175

KDCA Ldg Rwy 1, 4, 33  
 KADW Ldg Rwy 1 L/R  
 Ldg KDA A

(ALWYZ,FRDMM6) 24137

AL-443 (FAA)

WASHINGTON, DC