

APP CRS	Rwy Idg	5204
334°	TDZE	13
	Apt Elev	14

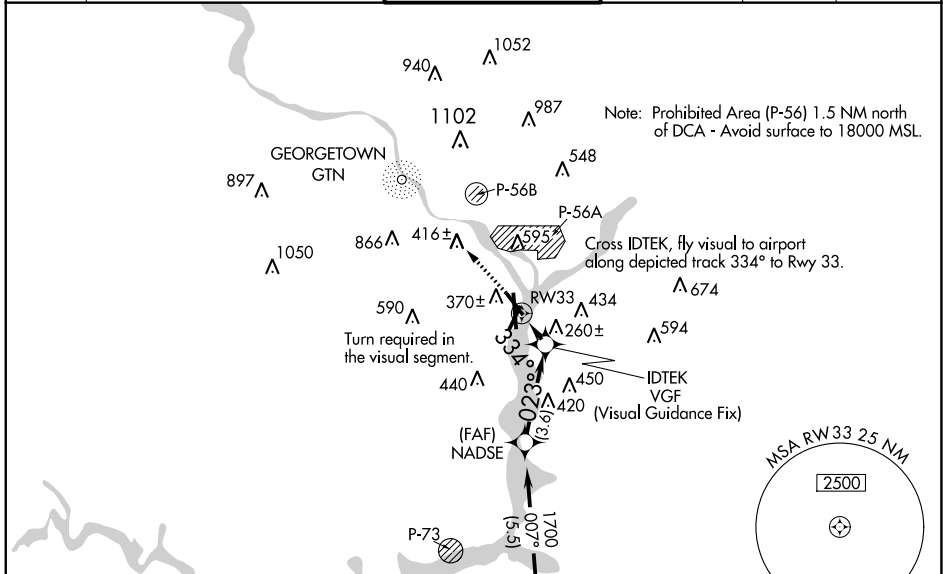
RNAV (GPS) RWY 33

RONALD REAGAN WASHINGTON NTL (DCA)

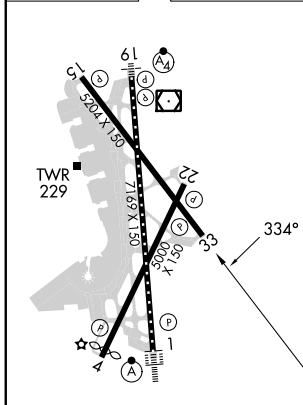
RNP APCH - GPS.
 RADAR required.

MISSED APPROACH: (Do not exceed 210K until Rwy 33)
 Climb to 2200 on the FMS lateral path to Rwy 33 and direct to GTN NDB and hold, continue climb-in-hold to 2200.

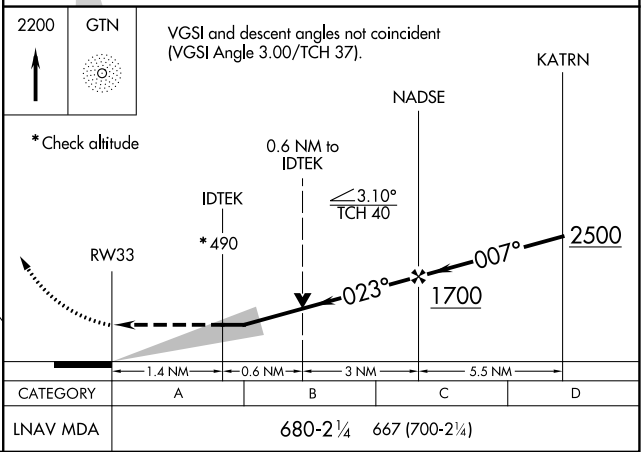
D-ATIS	POTOMAC APP CON	WASHINGTON TOWER	GND CON	CLNC DEL	CPDLC
132.65	119.85 239.25 (WEST/SOUTH) 124.2 360.8 (EAST)	119.1 257.6	121.7 257.6	128.25	



ELEV 14	D	TDZE 13
---------	----------	---------



TDZ/CL Rwy 1
 MIRL Rwy 4-22
 REIL Rwys 4, 15, 22 and 33
 HIRL Rwys 1-19 and 15-33



NE-3, 26 DEC 2024 to 23 JAN 2025

NE-3, 26 DEC 2024 to 23 JAN 2025