

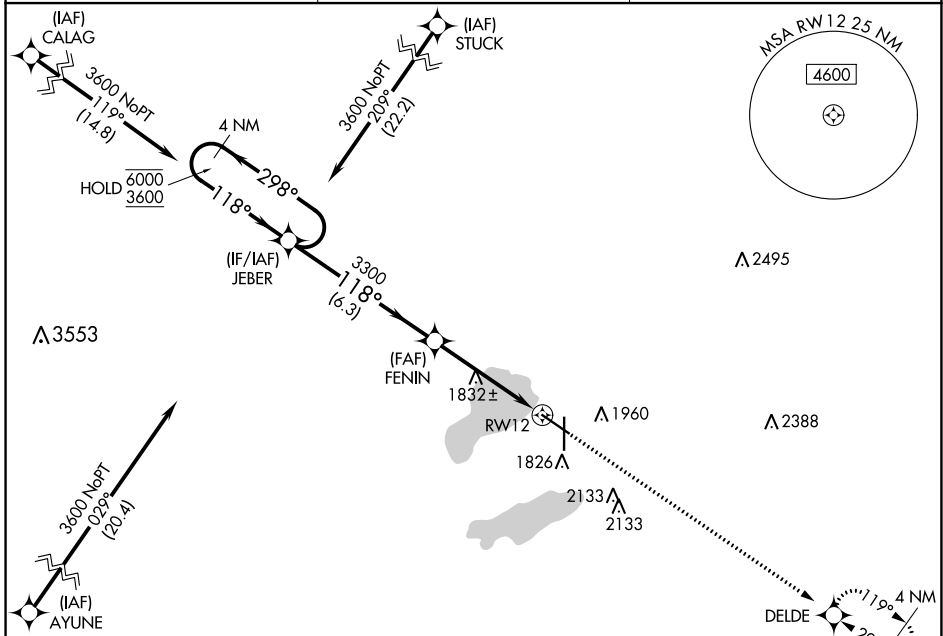
WAAS CH <b>53405</b> <b>W12A</b>	APP CRS <b>118°</b>	Rwy Idg TDZE <b>1749</b> Apt Elev <b>1749</b>	<b>6898</b>
--	------------------------	---	-------------

# RNAV (GPS) RWY 12

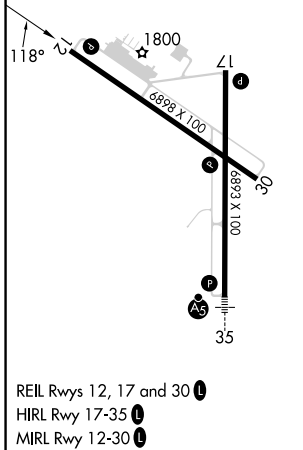
WATERTOWN RGNL (ATY)

RNP APCH - GPS.	MISSED APPROACH: Climb to 3600 direct DELDE and hold.
<p>▼ Rwy 12 helicopter visibility reduction below 3/4 SM NA.</p> <p>▲ For uncompensated Baro-VNAV systems, LNAV/VNAV NA below -18°C or above 54°C.</p>	

ASOS <b>126.625</b>	MINNEAPOLIS CENTER <b>128.5 306.2</b>	UNICOM <b>123.05 (CTAF) 0</b>
------------------------	--	----------------------------------



ELEV 1749	<b>D</b> TDZE 1749
-----------	--------------------



	4 NM Holding Pattern	JEBER	FENIN	3600	DELDE
	6000 ← 298°	3300	3300	↑	✧
	3600 → 118°	118°	118°		
	GP 3.00° TCH 48	6.3 NM	3.7 NM	1 NM to RW12	RW12
CATEGORY	A	B	C	D	
LPV DA		2021-7/8	272 (300-7/8)		
LNAV/VNAV DA		2076-1	327 (400-1)		
LNAV MDA		2100-1	351 (400-1)		
<b>C</b> CIRCLING	2260-1	511 (600-1)	2500-2 1/4 751 (800-2 1/4)	2500-2 1/2 751 (800-2 1/2)	

NC-1, 26 DEC 2024 to 23 JAN 2025

NC-1, 26 DEC 2024 to 23 JAN 2025