

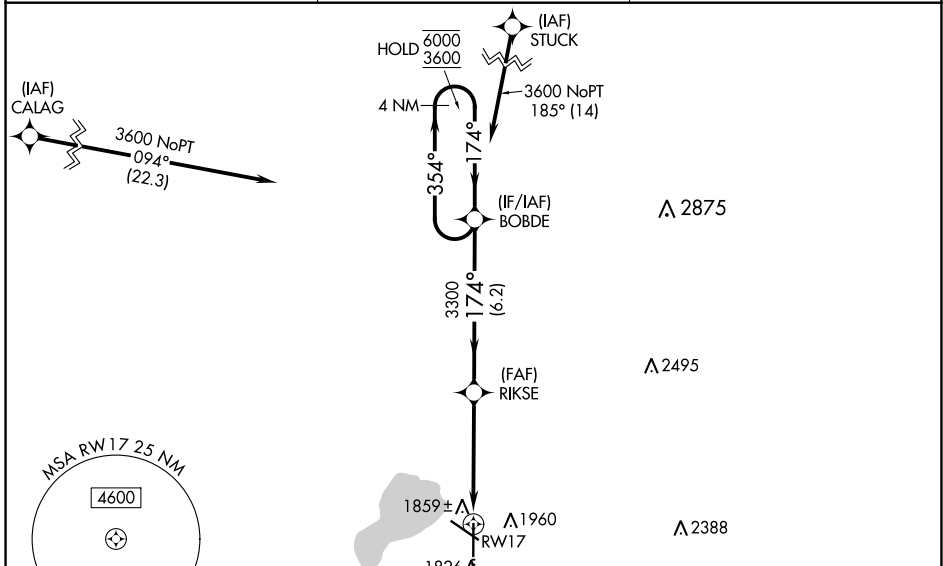
WAAS CH <b>82305</b> <b>W17A</b>	APP CRS <b>174°</b>	Rwy Idg TDZE Apt Elev	<b>6893</b> <b>1741</b> <b>1749</b>
--	------------------------	-----------------------------	---

# RNAV (GPS) RWY 17

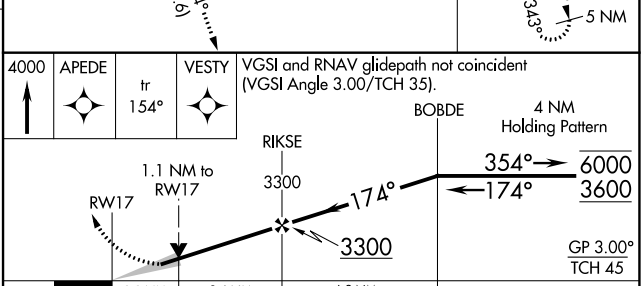
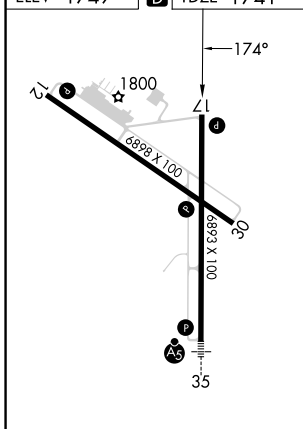
WATERTOWN RGNL (ATY)

RNP APCH - GPS.	MISSED APPROACH: Climb to 4000 direct APEDE and on track 154° to VESTY and hold.
▼ For uncompensated Baro-VNAV systems, LNAV/VNAV NA below -18°C or above 54°C.	

ASOS <b>126.625</b>	MINNEAPOLIS CENTER <b>128.5 306.2</b>	UNICOM <b>123.05 (CTAF) 0</b>
------------------------	--	----------------------------------



ELEV 1749	<b>D</b> TDZE 1741
-----------	--------------------



CATEGORY	A	B	C	D
LPV DA	2055-7/8 314 (400-7/8)			
LNAV/VNAV DA	2130-1 1/8 389 (400-1 1/8)			
LNAV MDA	2120-1 379 (400-1)			
<b>C</b> CIRCLING	2260-1 511 (600-1)	2500-2 1/4 751 (800-2 1/4)	2500-2 1/2 751 (800-2 1/2)	

REIL Rwy 12, 17 and 30  
HIRL Rwy 17-35  
MIRL Rwy 12-30

NC-1, 26 DEC 2024 to 23 JAN 2025

NC-1, 26 DEC 2024 to 23 JAN 2025