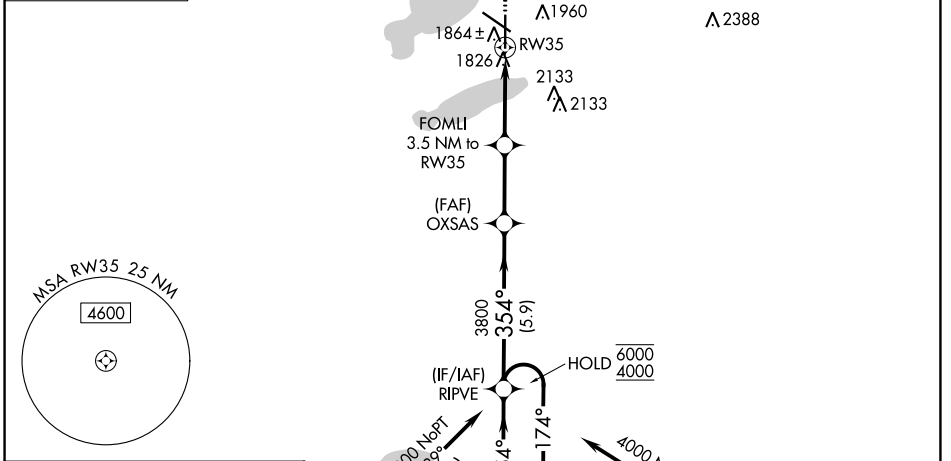
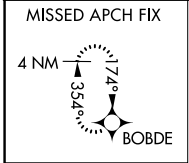


WAAS CH <b>82614</b> <b>W35A</b>	APP CRS <b>354°</b>	Rwy Idg TDZE <b>1745</b> Apt Elev <b>1749</b>
--	------------------------	---

# RNAV (GPS) RWY 35

WATERTOWN RGNL (ATY)

RNP APCH - GPS.		MALSR 	MISSED APPROACH: Climb to 3600 direct BOBDE and hold.
ASOS <b>126.625</b>	MINNEAPOLIS CENTER <b>128.5 306.2</b>	UNICOM <b>123.05 (CTAF) 0</b>	

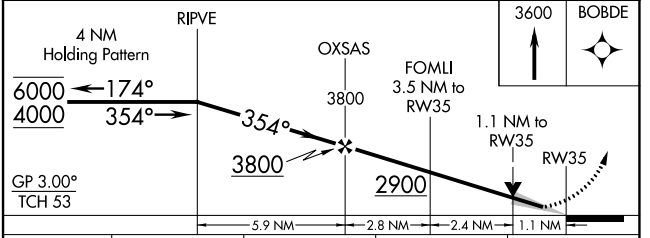
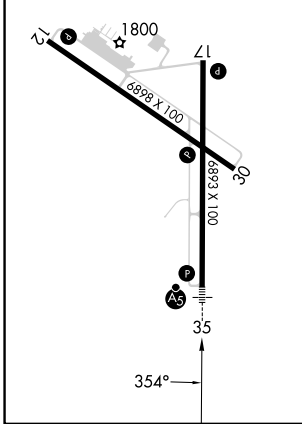


ELEV 1749	<b>D</b>	TDZE 1745
-----------	----------	-----------

REIL Rws 12, 17 and 30

HIRL Rwy 17-35

MIRL Rwy 12-30



CATEGORY	A	B	C	D
LPV DA		1945- $\frac{1}{2}$	200 (200- $\frac{1}{2}$ )	
LNAV/VNAV DA		2180- $\frac{3}{4}$	435 (500- $\frac{3}{4}$ )	
LNAV MDA	2160- $\frac{1}{2}$	415 (500- $\frac{1}{2}$ )	2160- $\frac{3}{4}$	415 (500- $\frac{3}{4}$ )
<b>C</b> CIRCLING	2260-1	511 (600-1)	2500-2 $\frac{1}{4}$ 751 (800-2 $\frac{1}{4}$ )	2500-2 $\frac{1}{2}$ 751 (800-2 $\frac{1}{2}$ )

NC-1, 26 DEC 2024 to 23 JAN 2025

NC-1, 26 DEC 2024 to 23 JAN 2025