

ILS or LOC RWY 23

LOC I-CEF 109.9	APCH CRS 228°	Rwy ldg 11,597 TDZE 241 Arpt Elev 241
---------------------------	-------------------------	--

[USAF]

WESTOVER ARB METROPOLITAN (KCEF)

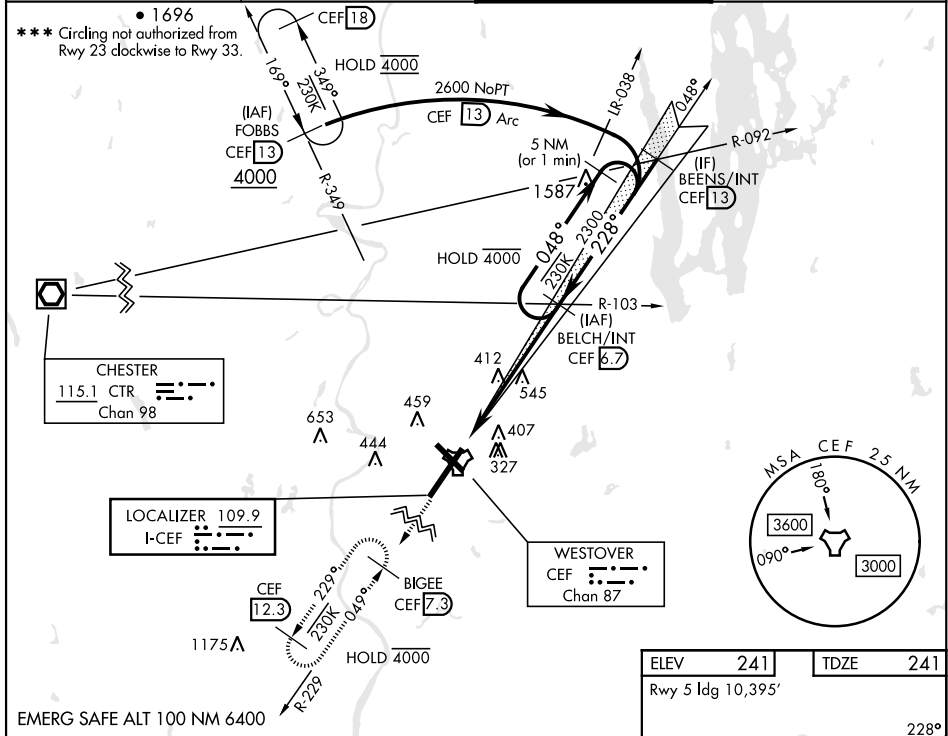
DME required. RADAR or RNAV required for missed apch.

▼ * When ALS inop, increase RVR to 40 and vis to 3/4 mile.
** When ALS inop, increase CAT AB RVR to 55 and vis to 1 mile, CAT CDE vis to 2 miles.



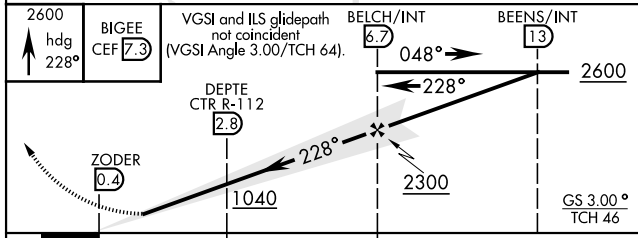
MISSED APPROACH: Climb to 2600 on heading 228° to intercept CEF TACAN R-229 direct BIGEE and hold, continue to climb-in-hold to 2600.

ATIS ★ 127.525	BRADLEY APP CON 125.35 281.5	TOWER ★ 134.85 (CTAF) 0 348.75	GND CON 118.35 275.8
--------------------------	--	---	--------------------------------



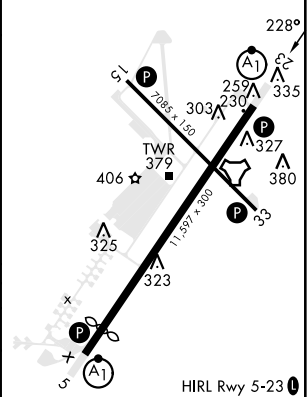
NE-1, 26 DEC 2024 to 23 JAN 2025

NE-1, 26 DEC 2024 to 23 JAN 2025



ELEV 241	TDZE 241
----------	----------

Rwy 5 ldg 10,395'



CATEGORY	A	B	C	D	E
S-ILS 23 *	441/24		200	[200-1/2]	
S-LOC 23 **	940/24 699 (700-1/2)		940-1 1/2 699 (700-1/2)		
***	940-1 699 (700-1)		940-2 699 (700-2)	1060-2 819 (900-2 3/4)	1080-3 839 (900-3)

FAF to MAP 6.3 NM					
Knots	60	90	120	150	180
Min:Sec	6:18	4:12	3:09	2:31	2:06

ILS or LOC RWY 23