

RNAV (GPS) RWY 23

APCH CRS	Rwy Idg	11,597
228°	TDZE	241
	Arprt Elev	241

AL-447 (USAF)

WESTOVER ARB METROPOLITAN (KCEF)

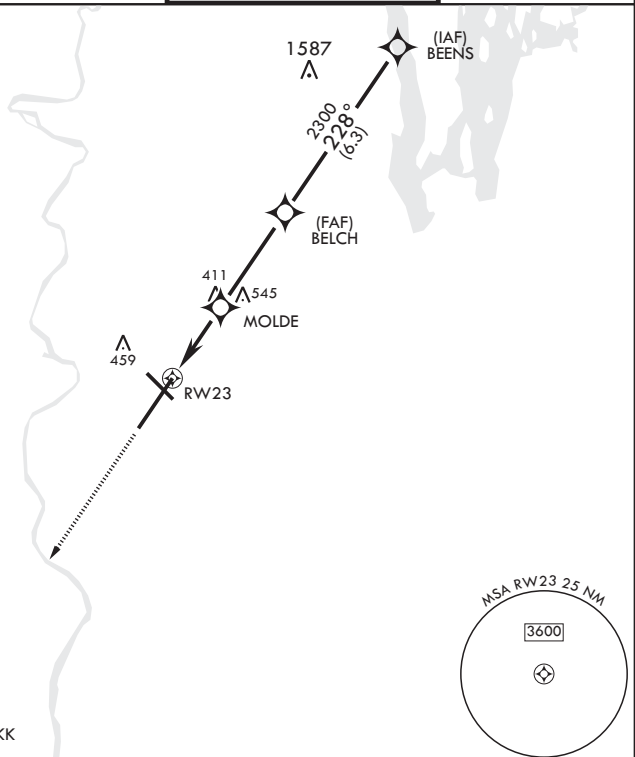
RNP APCH.	ALSF-1	MISSED APPROACH: Climb to 1000, then climbing left turn to 3000 direct HERKK and hold.
DME/DME RNP-0.3 NA.		
* When ALS inop, increase vis to 1 3/8 miles.		

ATIS* 127.525	BRADLEY APP CON/DEP CON 125.35 281.5	TOWER* 134.85 (CTAF) 0 348.75	GND CON 118.35 275.8
------------------	---	----------------------------------	-------------------------

** When ALS inop, increase CAT AB RVR to 55, vis to 1 mile; CAT CDE vis to 1 3/8 miles.
*** Circling not authorized from Rwy 23 clockwise to Rwy 33.

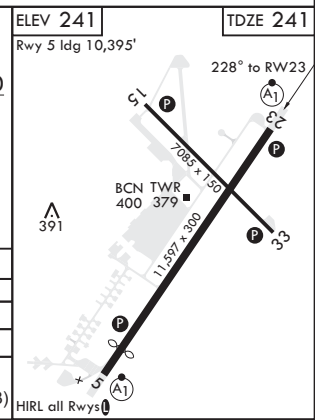
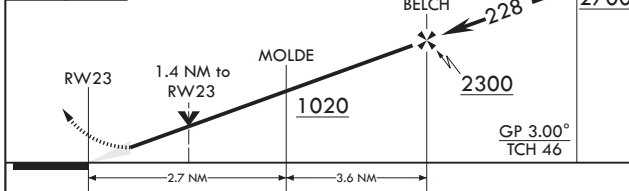
1549

For uncompensated Baro-VNAV systems, Procedure NA below -15°C (5°F) or above 54°C (130°F).



EMERG SAFE ALT 100 NM 6400

3000	HERKK	VGSI and RNAV glidepath not coincident (VGSI angle 3.00/TCH 64)	BEENS	ELEV 241	TDZE 241
				Rwy 5 Idg 10,395'	



CATEGORY	A	B	C	D	E
LNAV/VNAV DA*	760/55		519	(600-1)	
LNAV MDA**	760/24	519 (600-1/2)	760/55	519	(600-1)
CIRCLING***	760-1 519 (600-1)	780-1 539 (600-1)	840-1 1/2 599 (600-1 1/2)	1060-2 3/4 819 (900-2 3/4)	1080-3 839 (900-3)

RNAV (GPS) RWY 23

NE-1, 26 DEC 2024 to 23 JAN 2025

NE-1, 26 DEC 2024 to 23 JAN 2025