

TACAN RWY 23

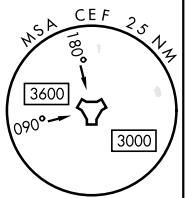
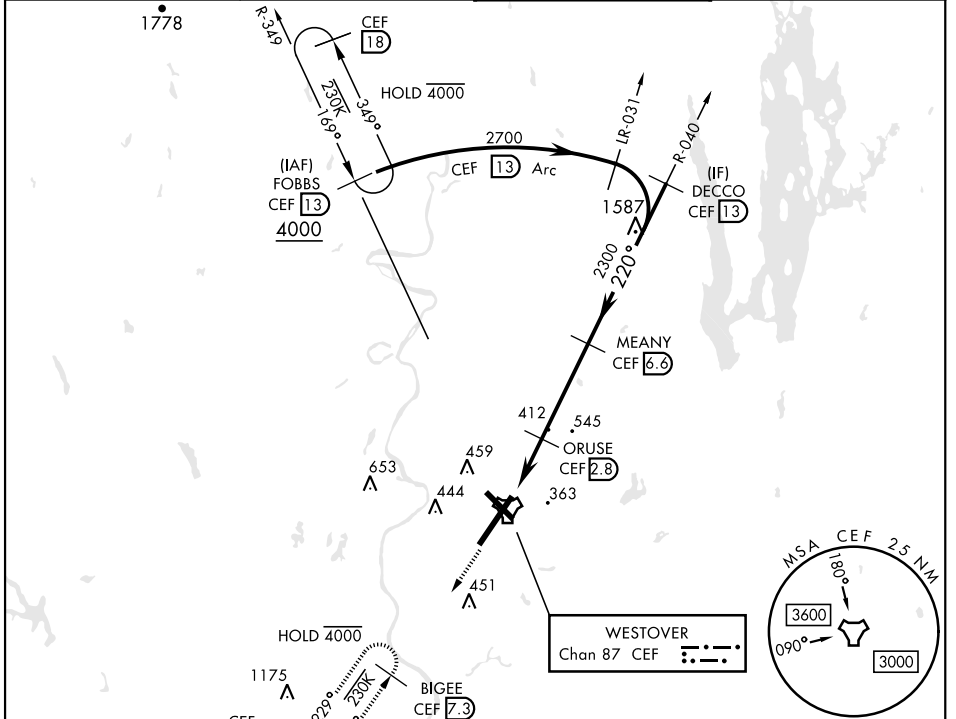
TACAN CEF Chan 87	APCH CRS 220°	Rwy Idg 11,597 TDZE 241 Arprt Elev 241	[USAF]	WESTOVER ARB METROPOLITAN (KCEF)
-----------------------------	-------------------------	-------------------------------------------------------------------	--------	----------------------------------

▽ * When ALS inop, increase CAT AB RVR to 55 and vis to 1 mile, CAT CDE vis to 1/2 miles.
** Circling not authorized all CAT acft from RWY 23 clockwise to RWY 33.

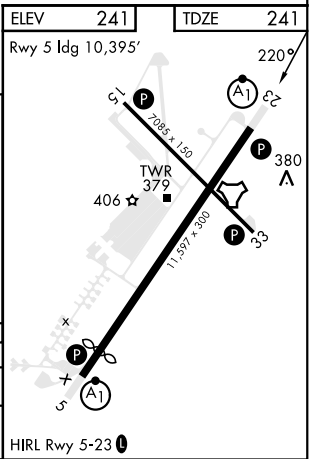


MISSED APPROACH: Climb to 2600 on heading 228° to intercept CEF TACAN R-229 direct BIGEE and hold.

ATIS ★ 127.525	BRADLEY APP CON 125.35 281.5	TOWER ★ 134.85 (CTAF) 348.75	GND CON 118.35 275.8
--------------------------	----------------------------------------	----------------------------------------	--------------------------------



2600 ↑ hdg 228°	CEF R-229	VGSi and descent angles not coincident			
CEF TACAN	CEF 1.8	ORUSE CEF 2.9	DECCO CEF 13		
WISAS CEF 0.9		MEANY CEF 6.6			
0.4	2 NM	3.8 NM			
CATEGORY	A	B	C	D	E
S-23 *	760/24 519 (600-1/2)		760/55 519 (600-1)		
CIRCLING **	760-1 519 (600-1)	780-1 539 (600-1)	840-1 599 (600-1 1/2)	1060-2 819 (900-2 3/4)	1080-3 839 (900-3)



TACAN RWY 23

NE-1, 26 DEC 2024 to 23 JAN 2025

NE-1, 26 DEC 2024 to 23 JAN 2025