

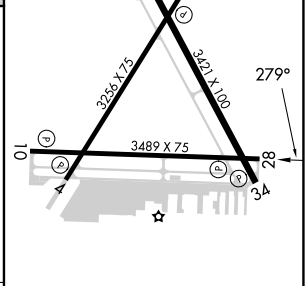
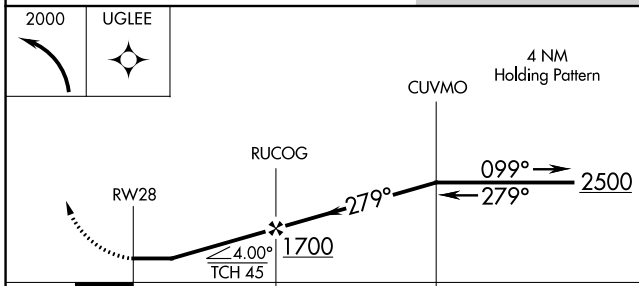
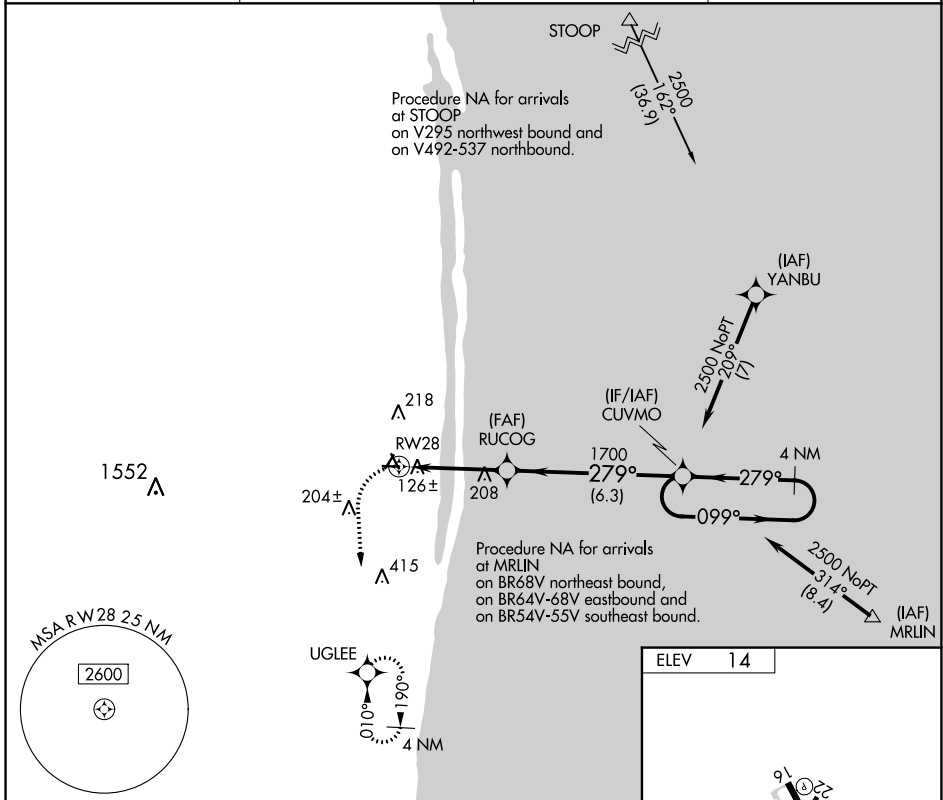
APP CRS	Rwy Idg	NA
279°	TDZE	NA
	Apt Elev	14

RNAV (GPS)-B

PALM BEACH COUNTY PARK (L.N.A)

<p>▼ DME/DME RNP-0.3 NA. Rwy 28 helicopter visibility reduction below 1 SM NA. Circling to Rwys 4, 16, 22, 28, 34 NA at night.</p>	<p>MISSED APPROACH: (Do not exceed 210K until turn completion) Climbing left turn to 2000 direct UGLEE and hold.</p>
---	--

<p>AWOS-3PT 119.925</p>	<p>PALM BEACH APP CON 127.35 343.6</p>	<p>CLNC DEL 127.35</p>	<p>UNICOM 122.7 (CTAF) 0</p>
------------------------------------	---	-----------------------------------	---



CATEGORY	A	B	C	D
C CIRCLING	460-1 446 (500-1)	520-1 506 (600-1)	580-1½ 566 (600-1½)	NA

ELEV	14
MIRL Rwys 4-22, 10-28 and 16-34 0	

SE-3, 26 DEC 2024 to 23 JAN 2025

SE-3, 26 DEC 2024 to 23 JAN 2025