

CPTAN THREE ARRIVAL (RNAV) Transition Routes

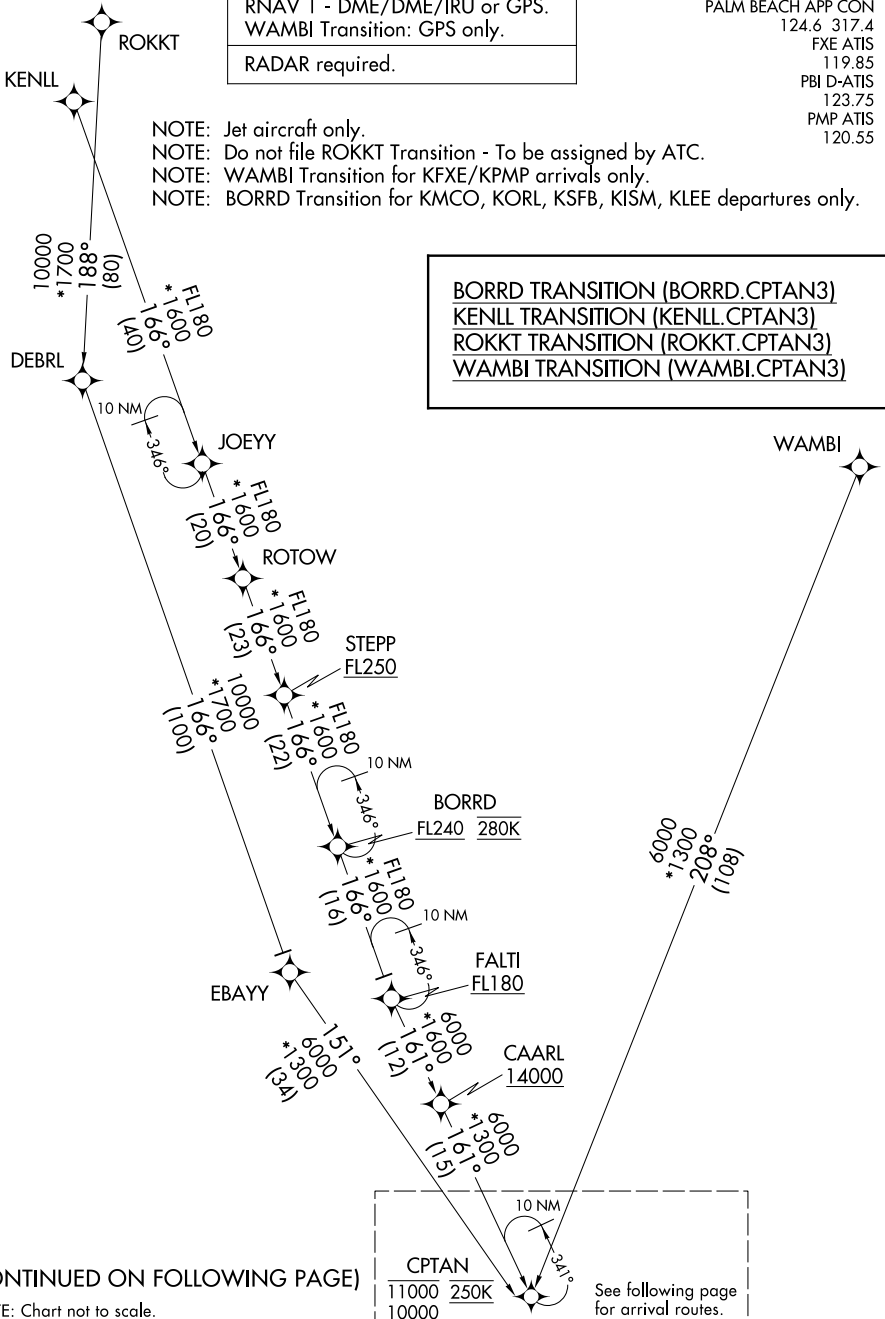
WEST PALM BEACH, FLORIDA

RNAV 1 - DME/DME/IRU or GPS. WAMBI Transition: GPS only.
RADAR required.

PALM BEACH APP CON
124.6 317.4
FXE ATIS
119.85
PBI D-ATIS
123.75
PMP ATIS
120.55

- NOTE: Jet aircraft only.
- NOTE: Do not file ROKKT Transition - To be assigned by ATC.
- NOTE: WAMBI Transition for KFEX/KPMP arrivals only.
- NOTE: BORRD Transition for KMCO, KORL, KSF, KISM, KLEE departures only.

BORRD TRANSITION (BORRD.CPTAN3)
KENLL TRANSITION (KENLL.CPTAN3)
ROKKT TRANSITION (ROKKT.CPTAN3)
WAMBI TRANSITION (WAMBI.CPTAN3)



(CONTINUED ON FOLLOWING PAGE)

NOTE: Chart not to scale.

CPTAN
11000 250K
10000

See following page for arrival routes.

SE-3, 26 DEC 2024 to 23 JAN 2025

SE-3, 26 DEC 2024 to 23 JAN 2025

CPTAN THREE ARRIVAL (RNAV) Transition Routes

WEST PALM BEACH, FLORIDA

CPTAN THREE ARRIVAL (RNAV) Arrival Routes

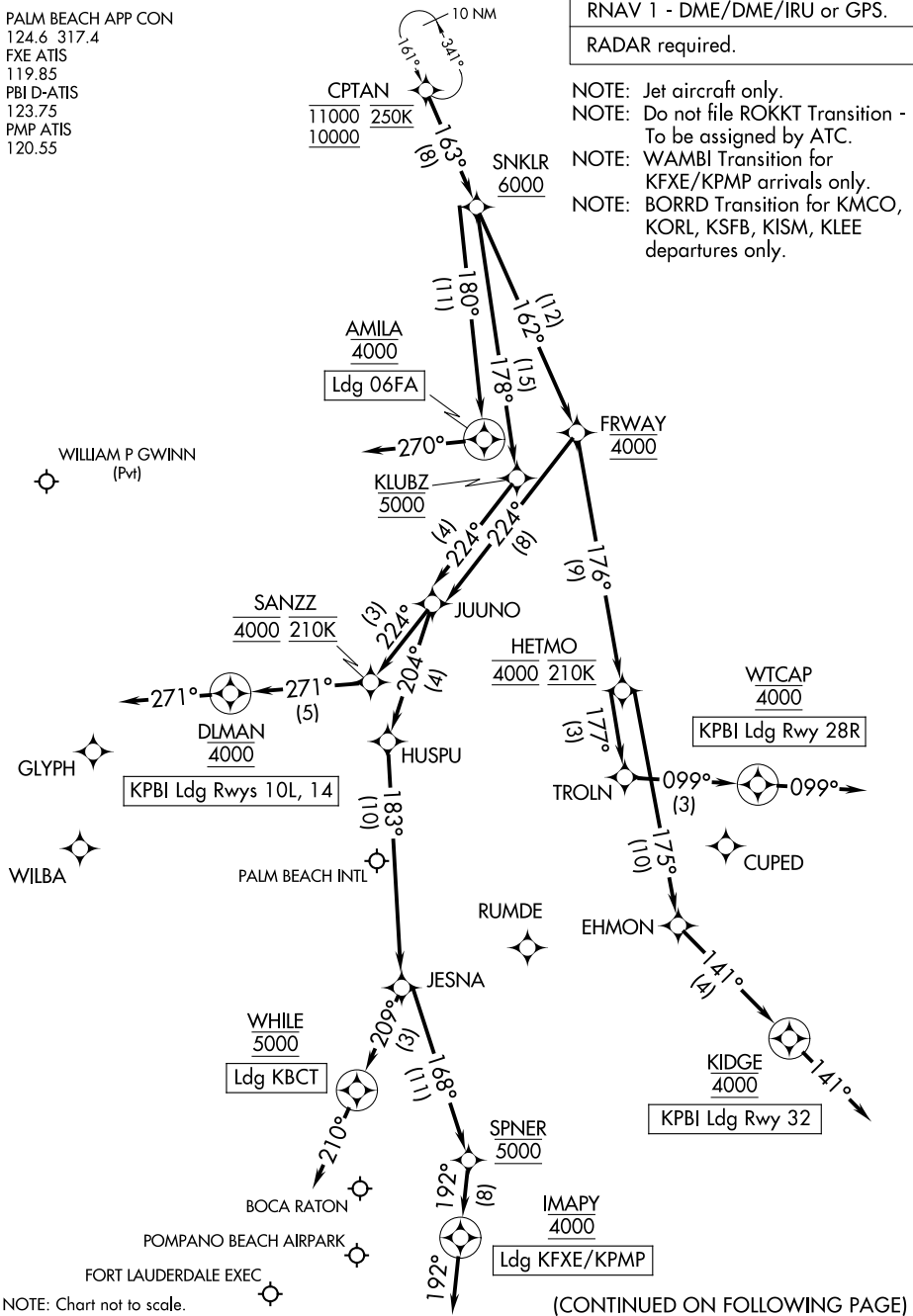
WEST PALM BEACH, FLORIDA

PALM BEACH APP CON
124.6 317.4
FXE ATIS
119.85
PBI D-ATIS
123.75
PMP ATIS
120.55

RNAV 1 - DME/DME/IRU or GPS.

RADAR required.

- NOTE: Jet aircraft only.
- NOTE: Do not file ROKKT Transition - To be assigned by ATC.
- NOTE: WAMBI Transition for KFEX/KPMP arrivals only.
- NOTE: BORRD Transition for KMCO, KORL, KSFB, KISM, KLEE departures only.



NOTE: Chart not to scale.

(CONTINUED ON FOLLOWING PAGE)

CPTAN THREE ARRIVAL (RNAV) Arrival Routes

WEST PALM BEACH, FLORIDA

SE-3, 26 DEC 2024 to 23 JAN 2025

SE-3, 26 DEC 2024 to 23 JAN 2025

ARRIVAL ROUTE DESCRIPTION

KPBI: From CPTAN on track 163° to cross SNKLR at or above 6000.

LANDING KPBI RUNWAYS 10L, 14: From SNKLR on track 162° to cross FRWAY at 4000, then on track 224° to JUUNO, then on track 224° to cross SANZZ at 4000 and at 210K, then on track 271° to cross DLMAN at 4000, then on track 271°. Expect RADAR vectors to final approach course.

LANDING KPBI RUNWAY 28R: From SNKLR on track 162° to cross FRWAY at 4000, then on track 176° to cross HETMO at 4000 and at 210K, then on track 177° to TROLN, then on track 099° to cross WTCAP at 4000, then on track 099°. Expect RADAR vectors to final approach course.

LANDING KPBI RUNWAY 32: From SNKLR on track 162° to cross FRWAY at 4000, then on track 176° to cross HETMO at 4000 and at 210K, then on track 175° to EHMON, then on track 141° to cross KIDGE at 4000, then on track 141°. Expect RADAR vectors to final approach course.

LANDING 06FA: From CPTAN on track 163° to cross SNKLR at or above 6000, then on track 180° to cross AMILA at 4000, then on heading 270°. Expect RADAR vectors to final approach course.

LANDING KBCT: From CPTAN on track 163° to cross SNKLR at or above 6000, then on track 178° to cross KLUBZ at 5000, then on track 224° to JUUNO, then on track 204° to HUSPU, then on track 183° to JESNA, then on track 209° to cross WHILE at 5000, then on heading 210°. Expect RADAR vectors to final approach course.

LANDING KFXE/KPMP: From CPTAN on track 163° to cross SNKLR at or above 6000, then on track 178° to cross KLUBZ at 5000, then on track 224° to JUUNO, then on track 204° to HUSPU, then on track 183° to JESNA, then on track 168° to cross SPNER at 5000, then on track 192° to cross IMAPY at 4000, then on track 192°. Expect RADAR vectors to final approach course.

SE-3, 26 DEC 2024 to 23 JAN 2025

SE-3, 26 DEC 2024 to 23 JAN 2025