

RNAV 1 - DME/DME/IRU or GPS.  
PEACH Transition: GPS.  
RADAR required.

MAHHI THREE ARRIVAL (RNAV)  
(MAHHI, MAHHI3) 19MAY22

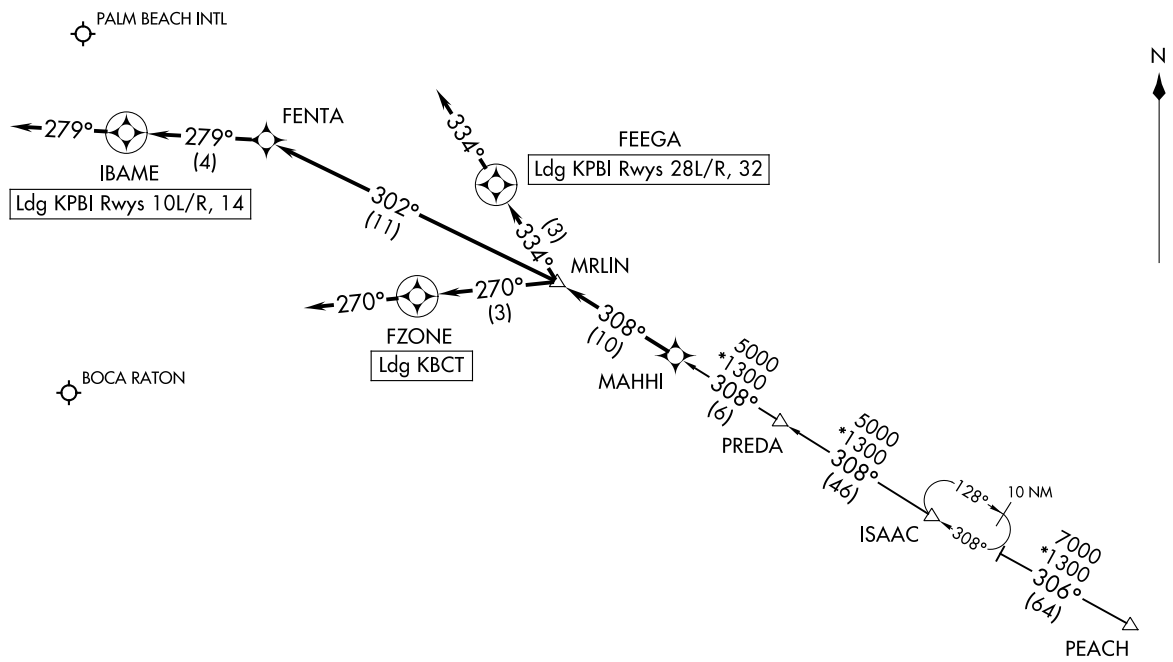
(MAHHI, MAHHI3) 23222  
MAHHI THREE ARRIVAL (RNAV)

AL-449 (FAA)

WEST PALM BEACH, FLORIDA

WEST PALM BEACH, FLORIDA

PALM BEACH APP CON  
127.35 343.6  
PBI D-ATIS  
123.75



NOTE: Chart not to scale.

(NARRATIVE ON FOLLOWING PAGE)

ARRIVAL ROUTE DESCRIPTION

ISAAC TRANSITION (ISAAC.MAHHI3)  
PEACH TRANSITION (PEACH.MAHHI3)  
PREDA TRANSITION (PREDA.MAHHI3)

KPBI: From MAHHI on track 308° to MRLIN.

LANDING KPBI RUNWAYS 10L/R, 14: From MRLIN on track 302° to FENTA, then on track 279° to IBAME, then on track 279°. Expect RADAR vectors to final approach course.

LANDING KPBI RUNWAYS 28L/R, 32: From MRLIN on track 334° to FEEGA, then on track 334°. Expect RADAR vectors to final approach course.

LANDING KBCT: From MAHHI on track 308° to MRLIN, then on track 270° to FZONE, then on track 270°. Expect RADAR vectors to final approach course.

SE-3, 26 DEC 2024 to 23 JAN 2025

SE-3, 26 DEC 2024 to 23 JAN 2025