

**TOP ALTITUDE:  
11000**

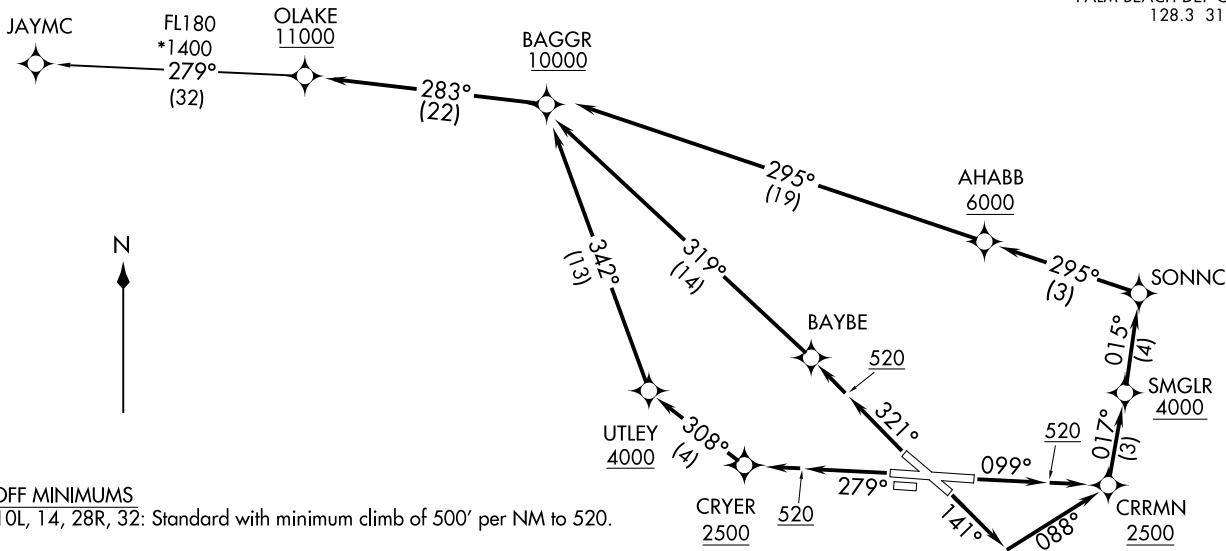
RNAV 1 - DME/DME/IRU or GPS.  
RADAR required for non-GPS equipped aircraft.

D-ATIS 123.75  
CLNC DEL 121.6 284.6  
CPDLC  
GND CON 121.9 284.6  
PALM BEACH TOWER 119.1 257.8  
PALM BEACH DEP CON 128.3 317.4

(OLAKE2.OLAKE) 22195  
OLAKE TWO DEPARTURE (RNAV)

AL-449 (FAA)

PALM BEACH INTL (PBI)  
WEST PALM BEACH, FLORIDA



NOTE: Turbo-jets only.

(NARRATIVE ON FOLLOWING PAGE)

NOTE: Chart not to scale.

OLAKE TWO DEPARTURE (RNAV)  
(OLAKE2.OLAKE) 19NAM122

WEST PALM BEACH, FLORIDA  
PALM BEACH INTL (PBI)

# OLAKE TWO DEPARTURE (RNAV)



## DEPARTURE ROUTE DESCRIPTION

TAKEOFF RUNWAY 10L: Climb on heading 099° to 520, then direct CRRMN at or above 2500, then on track 017° to cross SMGLR at or above 4000, then on track 015° to SONNC, then on track 295° to cross AHABB at or above 6000, then on track 295° to cross BAGGR at or above 10000, thence ...

TAKEOFF RUNWAY 14: Climb on heading 141° to intercept course 088° to cross CRRMN at or above 2500, then on track 017° to cross SMGLR at or above 4000, then on track 015° to SONNC, then on track 295° to cross AHABB at or above 6000, then on track 295° to cross BAGGR at or above 10000, thence ...

TAKEOFF RUNWAY 28R: Climb on heading 279° to 520, then direct CRYER at or above 2500, then on track 308° to cross UTLEY at or above 4000, then on track 342° to cross BAGGR at or above 10000, thence ...

TAKEOFF RUNWAY 32: Climb on heading 321° to 520, then direct BAYBE, then on track 319° to cross BAGGR at or above 10000, thence ...

...on track 283° to cross OLAKE at or above 11000, then on transition.  
Maintain 11000, expect filed altitude within 10 minutes after departure.

JAYMC TRANSITION (OLAKE2.JAYMC)

SE-3, 26 DEC 2024 to 23 JAN 2025

SE-3, 26 DEC 2024 to 23 JAN 2025