

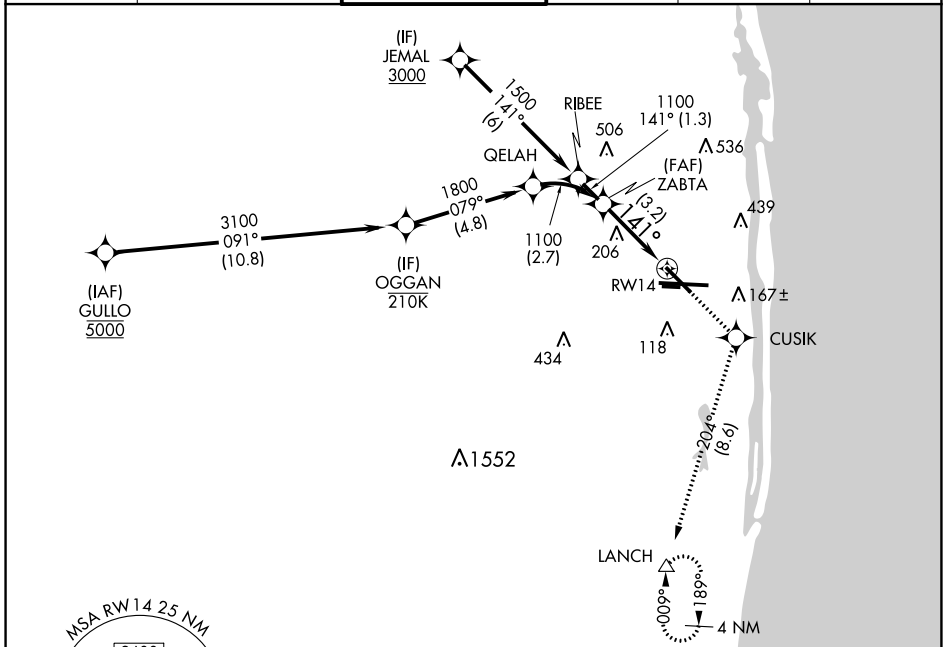
APP CRS 141°	Rwy ldg TDZE Apt Elev	6000 17 20
------------------------	-----------------------------	---------------------------------------

RNAV (RNP) Z RWY 14

PALM BEACH INTL (PBI)

RNP AR APCH - GPS.		MISSED APPROACH: Climb to 2000 direct CUSIK and on track 204 to LANCH and hold.			
▼ For uncompensated Baro-VNAV systems, procedure NA below 6°C or above 54°C.					

D-ATIS 123.75	PALM BEACH APP CON 128.3 317.4	PALM BEACH TOWER 119.1 257.8	GND CON 121.9 284.6	CLNC DEL 121.6 284.6	CPDLC
-------------------------	--	--	-------------------------------	--------------------------------	-------

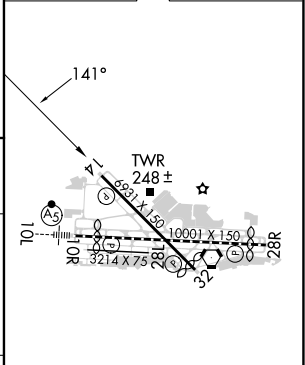


SE-3, 26 DEC 2024 to 23 JAN 2025

SE-3, 26 DEC 2024 to 23 JAN 2025

VGSi and RNAV glidepath not coincident (VGSi Angle 3.00/TCH 66).		2000	CUSIK	tr 204°	LANCH
ZABTA 1100		See planview for multiple IF locations.			
GP 3.00° TCH 51		RWY 14			
3.2 NM					

ELEV 20	D TDZE 17
---------	------------------



CATEGORY	A	B	C	D
RNP 0.30 DA	354-1		337 (400-1)	

HIRL Rwy 10L-28R
REIL Rwy 10R, 14, 28L, 28R and 32
MIRL Rwy 14-32 and 10R-28L

AUTHORIZATION REQUIRED