

# RNAV (RNP) Z RWY 28R

PALM BEACH INTL (PBI)

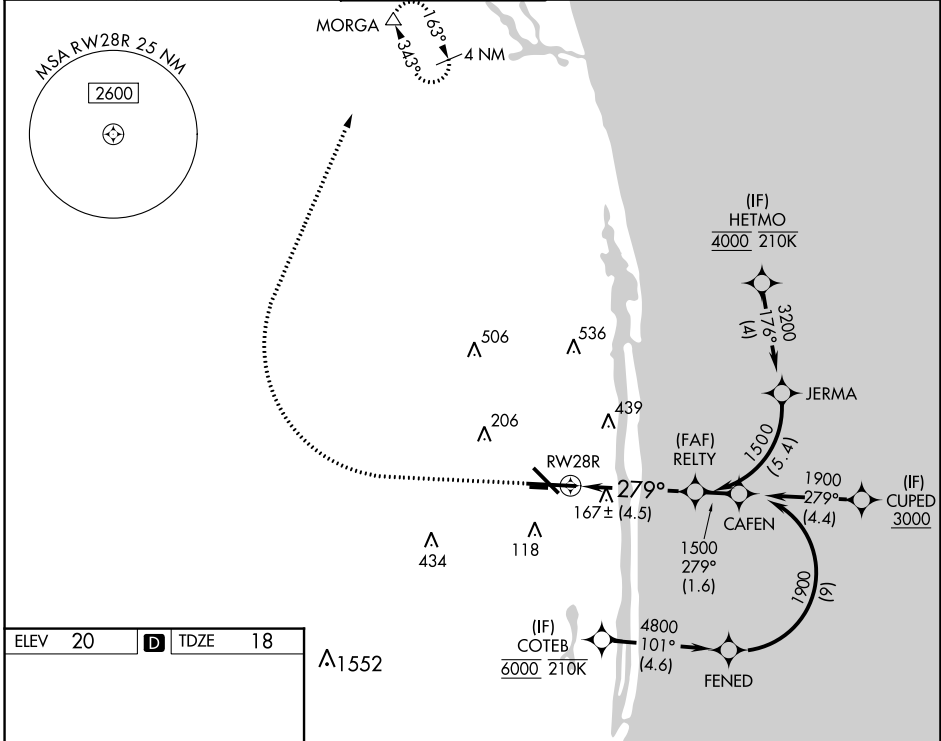
APP CRS	Rwy Idg	<b>8240</b>
<b>279°</b>	TDZE	<b>18</b>
	Apt Elev	<b>20</b>

RNP AR APCH - GPS.

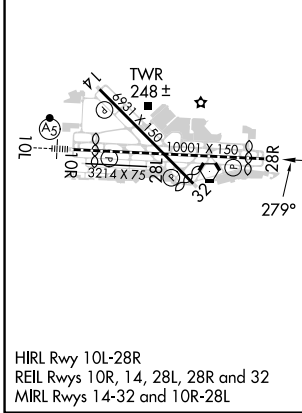
▼ For uncompensated Baro-VNAV systems, procedure NA below 6°C or above 54°C.

MISSED APPROACH: Climb to 500 then climbing right turn to 3000 direct MORGA and hold.

D-ATIS <b>123.75</b>	PALM BEACH APP CON <b>128.3 317.4</b>	PALM BEACH TOWER <b>119.1 257.8</b>	GND CON <b>121.9 284.6</b>	CLNC DEL <b>121.6 284.6</b>	CPDLC
-------------------------	------------------------------------------	----------------------------------------	-------------------------------	--------------------------------	-------



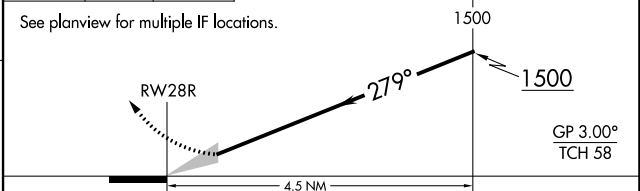
ELEV	20	<b>D</b>	TDZE	18
------	----	----------	------	----



500    3000    MORGA

↑    ↪    △

VGSI and RNAV glidepath not coincident (VGSI Angle 3.00/TCH 70).



CATEGORY	A	B	C	D
RNP 0.30 DA	404/60    386 (400-1¼)			

## AUTHORIZATION REQUIRED

SE-3, 26 DEC 2024 to 23 JAN 2025

SE-3, 26 DEC 2024 to 23 JAN 2025