

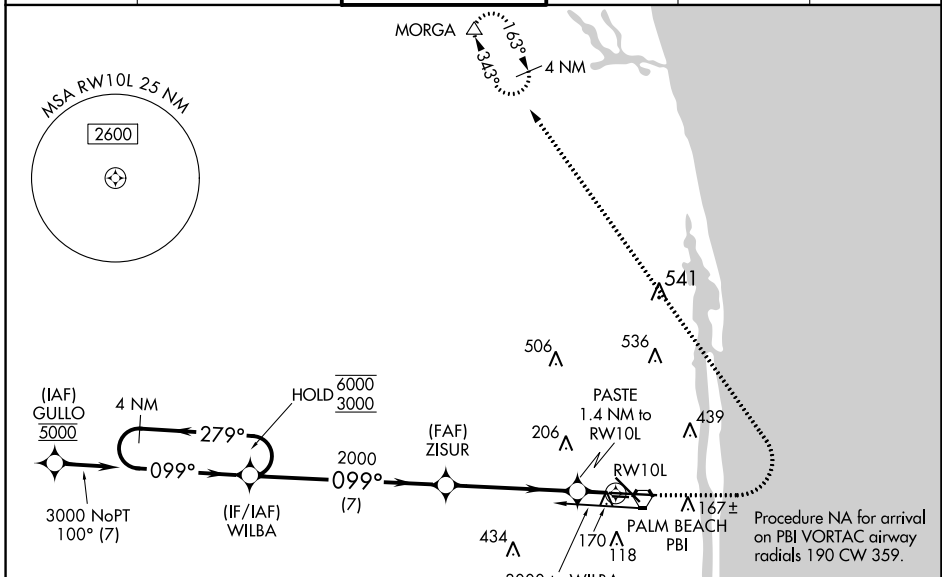
WAAS CH 97317 W10A	APP CRS 099°	Rwy Idg 8151 TDZE 16 Apt Elev 20
--	------------------------	---

RNAV (GPS) Y RWY 10L

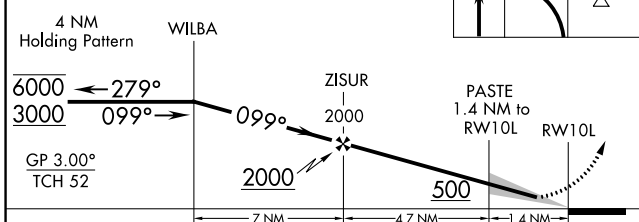
PALM BEACH INTL (PBI)

RNP APCH - GPS.	MALSR 	MISSED APPROACH: Climb to 1000 then climbing left turn to 3000 direct MORGA and hold.
<p>⚠ For uncompensated Baro-VNAV systems, LNAV/VNAV NA below 6°C or above 54°C. For inop ALS, increase LNAV/VNAV all Cats visibility to RVR 5500 and increase LNAV Cats C/D visibility to RVR 6000. # RVR 1800 authorized with use of FD or AP or HUD to DA.</p>		

D-ATIS 123.75	PALM BEACH APP CON 128.3 317.4	PALM BEACH TOWER 119.1 257.8	GND CON 121.9 284.6	CLNC DEL 121.6 284.6	CPDLC
-------------------------	--	--	-------------------------------	--------------------------------	-------



VGSI and RNAV glidepath not coincident (VGSI Angle 3.00/TCH 68).



ELEV 20	TDZE 16
---------	---------

TWR 248±

10001 X 1500

REIL Rwy 10R, 14, 28L, 28R and 32

MIRL Rwy 14-32 and 10R-28L

CATEGORY	A	B	C	D
LPV DA #		216/24	200 (200-½)	
LNAV/VNAV DA		392/35	376 (400-¾)	
LNAV MDA	420/24	404 (400-½)	420/40	404 (400-¾)
CIRCLING	560-1	540 (600-1)	740-2 720 (800-2)	780-2½ 760 (800-2½)

SE-3, 26 DEC 2024 to 23 JAN 2025

SE-3, 26 DEC 2024 to 23 JAN 2025