

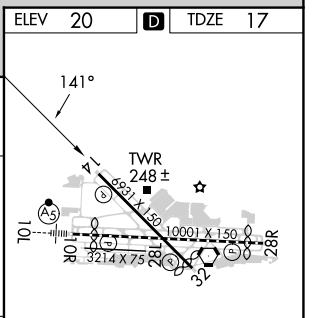
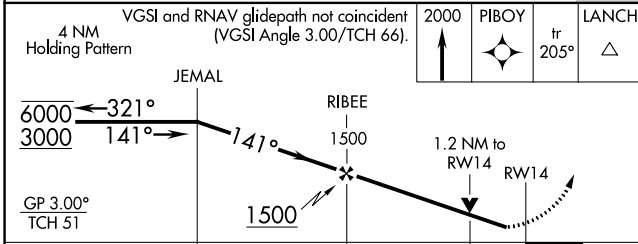
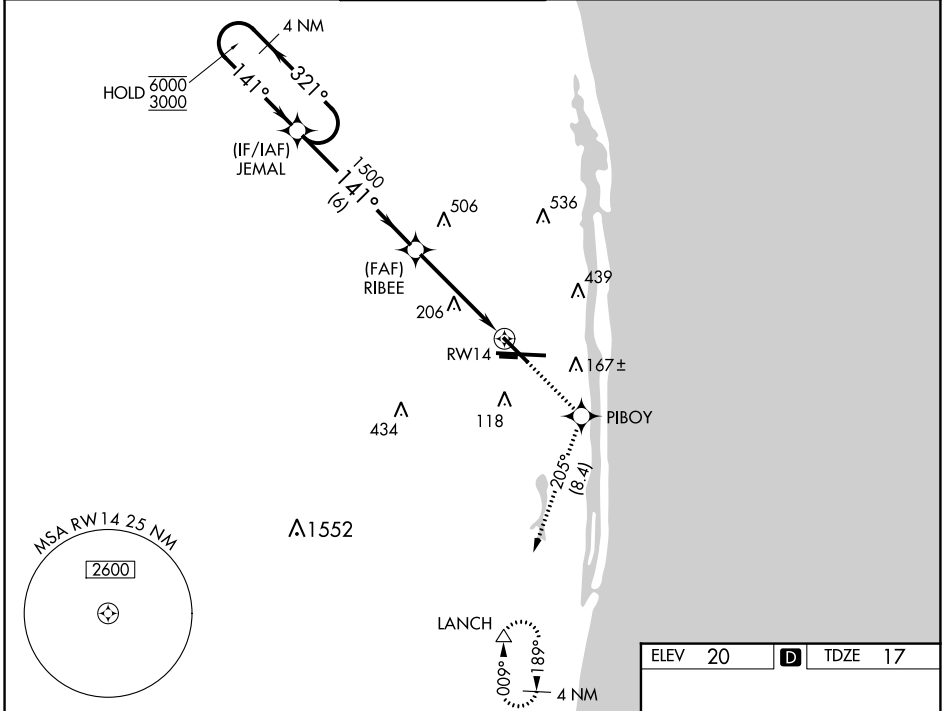
WAAS CH 40018 W14A	APP CRS 141°	Rwy Idg TDZE 17 Apt Elev 20	6000
--	------------------------	---	-------------

RNAV (GPS) Y RWY 14

PALM BEACH INTL (PBI)

RNP APCH - GPS.		MISSED APPROACH: Climb to 2000 direct PIBOY and on track 205° to LANCH and hold.	
<p>▼ Rwy 14 helicopter visibility reduction below 3/4 SM NA. For uncompensated Baro-VNAV systems, LNAV/VNAV NA below 6°C or above 54°C.</p> <p>▲</p>			

D-ATIS 123.75	PALM BEACH APP CON 128.3 317.4	PALM BEACH TOWER 119.1 257.8	GND CON 121.9 284.6	CLNC DEL 121.6 284.6	CPDLC
-------------------------	--	--	-------------------------------	--------------------------------	-------



CATEGORY	A	B	C	D
LPV DA		269-3/4	252 (300-3/4)	
LNAV/VNAV DA		338-1	321 (400-1)	
LNAV MDA	460-1	443 (500-1)	460-1 3/8	443 (500-1 3/8)
C CIRCLING	560-1	540 (600-1)	740-2 720 (800-2)	780-2 1/2 760 (800-2 1/2)

HIRL Rwy 10L-28R
REIL Rwy 10R, 14, 28L, 28R and 32
MIRL Rwy 14-32 and 10R-28L

SE-3, 26 DEC 2024 to 23 JAN 2025

SE-3, 26 DEC 2024 to 23 JAN 2025