

LOC/DME I-JKH <b>109.95</b> Chan 36 (Y)	APP CRS <b>272°</b>	Rwy Idg <b>9817</b> TDZE <b>469</b> Apt Elev <b>491</b>
-----------------------------------------------	------------------------	---------------------------------------------------------------

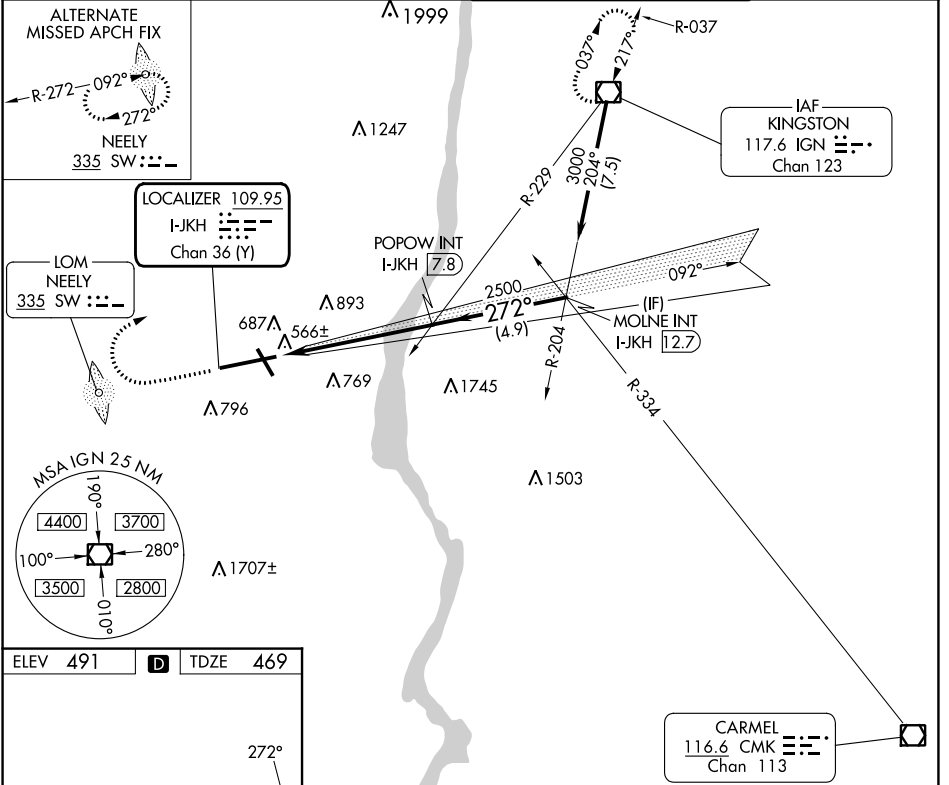
# ILS or LOC RWY 27

NEW YORK STEWART INTL (SWF)

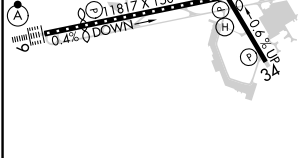
**▽**  
**▲**

MISSED APPROACH: Climb to 1600 then climbing right turn to 3000 direct IGN VOR/DME and hold.

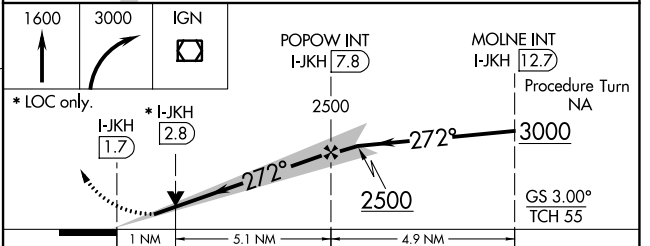
ATIS <b>124.575</b>	NEW YORK APP CON <b>132.75 363.1</b>	STEWART TOWER <b>121.0 254.4</b>	GND CON <b>121.9</b>
------------------------	-----------------------------------------	-------------------------------------	-------------------------



ELEV 491	<b>D</b>	TDZE 469
----------	----------	----------



TDZ/CL Rwy 9	HIRL Rwys 9-27 and 16-34	REIL Rwys 16, 27 and 34			
FAF to MAP 6.1 NM					
Knots	60	90	120	150	180
Min:Sec	6:06	4:04	3:03	2:26	2:02



CATEGORY	A	B	C	D
S-ILS 27	719-1 250 (300-1)			
S-LOC 27	840-1 371 (400-1)			840-1½ 371 (400-1½)
<b>C</b> CIRCLING	1200-1 709 (800-1)		1200-2 709 (800-2)	1200-2½ 709 (800-2½)

NE-2, 26 DEC 2024 to 23 JAN 2025

NE-2, 26 DEC 2024 to 23 JAN 2025