

# HI-TACAN Z RWY 14

TACAN NUW Chan <b>85</b>	APCH CRS <b>141°</b>	Rwy ldg TDZE <b>8000</b> <b>39</b> Arpt Elev <b>47</b>
--------------------------	----------------------	--

[USN]

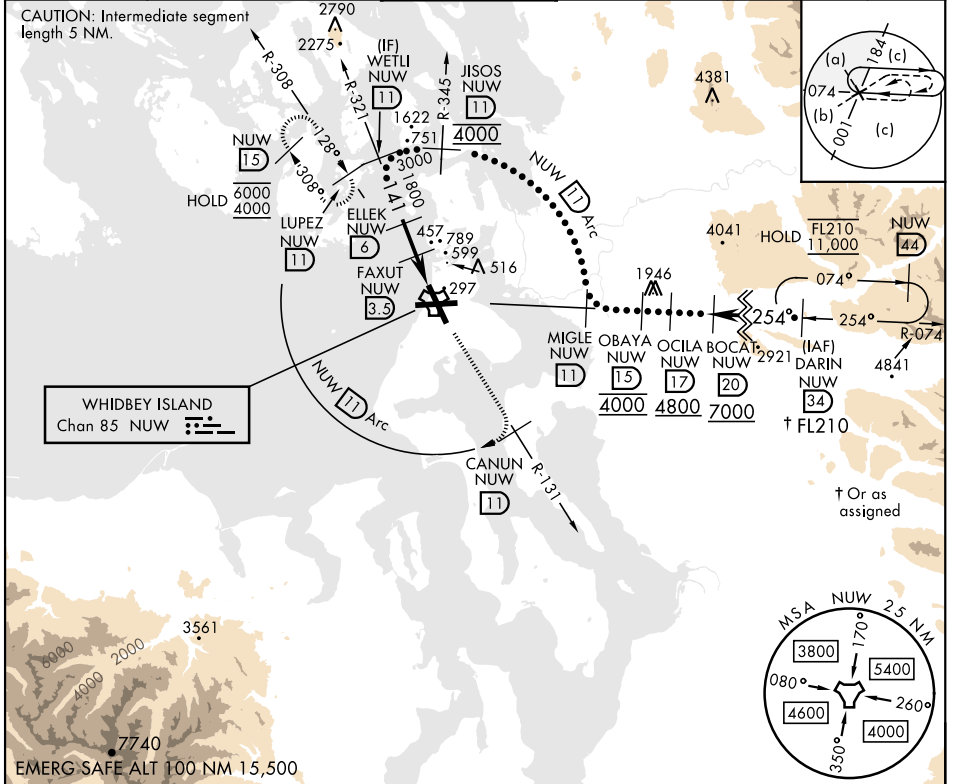
WHIDBEY ISLAND NAS (AULT FLD) (KNUW)

\* When ALS inop, increase vis to 1½ miles.

ALS-F-2

MISSED APPROACH: Climb to 4000 via NUW TACAN R-131 to CANUN, then arc SW of NUW TACAN via 11 DME Arc to LUPEZ and hold.

ATIS <b>134.15 281.5</b>	WHIDBEY APP CON (E) <b>120.7 270.8</b> (W) <b>118.2 285.65</b>	WHIDBEY TOWER <b>127.9 340.2</b>	GND CON <b>121.75 336.4</b>	CLNC DEL <b>135.1 379.9</b>	ASR/PAR
--------------------------	---	----------------------------------	-----------------------------	-----------------------------	---------



	WETLI NUW (11) 3000	ELLEK NUW (6) 1800	FAXUT NUW (3.5) 1020	NUW (1.9) JOVPO NUW (0.8) NUW TACAN	ELEV 47	TDZE 39
			4000 NUW R-131	CANUN NUW (11)		
				NUW (11) Arc		
CATEGORY	C	D	E			
S-14*	560/55	521	(600-1)			
CIRCLING	860-2½ 813 (900-2½)	900-2¾ 853 (900-2¾)	1200-3 1153 (1200-3)			
	HIRL Rwy 7-25, 14-32 TDZL/CL Rwy 14					

# HI-TACAN Z RWY 14

NW-1, 26 DEC 2024 to 23 JAN 2025

NW-1, 26 DEC 2024 to 23 JAN 2025