

HI-TACAN Z RWY 32

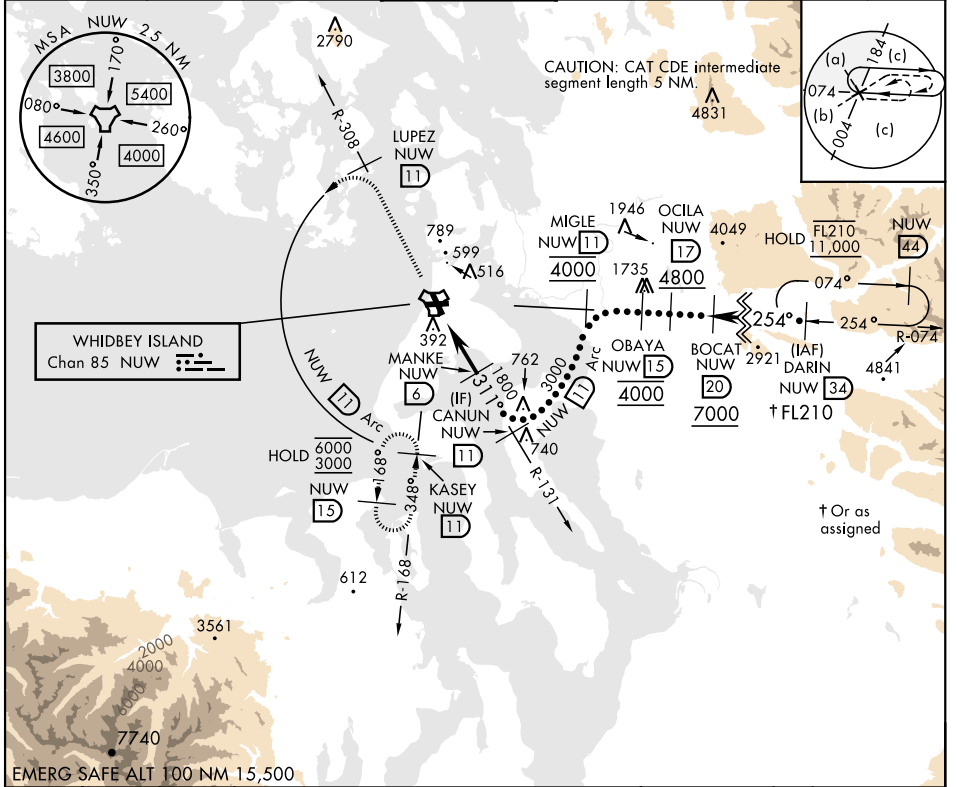
TACAN Chan 85	APCH CRS 311°	Rwy ldg TDZE 47 Arpt Elev 47
-------------------------	-------------------------	--

[USN]

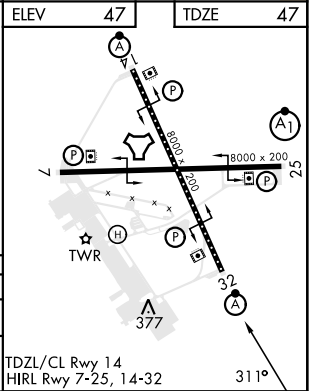
WHIDBEY ISLAND NAS (AULT FLD) (KNUW)

<p>▼ * When ALS inop, increase CAT CDE vis to 1 3/4 miles.</p>	<p>ALSF-2</p>	<p>MISSED APPROACH: Climb to 3000 via NUW TACAN R-308 to LUPEZ, then arc W of NUW via 11 DME Arc to KASEY and hold.</p>
---	---------------	---

<p>ATIS 134.15 281.5</p>	<p>WHIDBEY APP CON 120.7 270.8 (EAST) 118.2 285.65 (WEST)</p>	<p>WHIDBEY TOWER 127.9 340.2</p>	<p>GND CON 121.75 336.4</p>	<p>CLNC DEL 135.1 379.9</p>	<p>ASR/PAR</p>
-------------------------------------	---	---	--	--	----------------



<p>3000 ↑ NUW R-308</p>	<p>LUPEZ NUW [11]</p>	<p>NUW [11] Arc</p>	
<p>NUW TACAN</p>	<p>NUW [2,3]</p>	<p>MANKE NUW [6]</p>	
<p>NAVOE NUW [1,8]</p>	<p>3.20° TCH 38</p>	<p>3000</p>	
<p>4.2 NM</p>			
<p>CATEGORY</p>	C	D	E
<p>S-32*</p>	680-1 3/8	633 (700-1%)	
<p>CIRCLING</p>	860-2 1/2 813 (900-2 1/2)	900-2 3/4 853 (900-234)	1200-3 1153 (1200-3)



HI-TACAN Z RWY 32

NW-1, 26 DEC 2024 to 23 JAN 2025

NW-1, 26 DEC 2024 to 23 JAN 2025