

OAK HARBOR, WASHINGTON

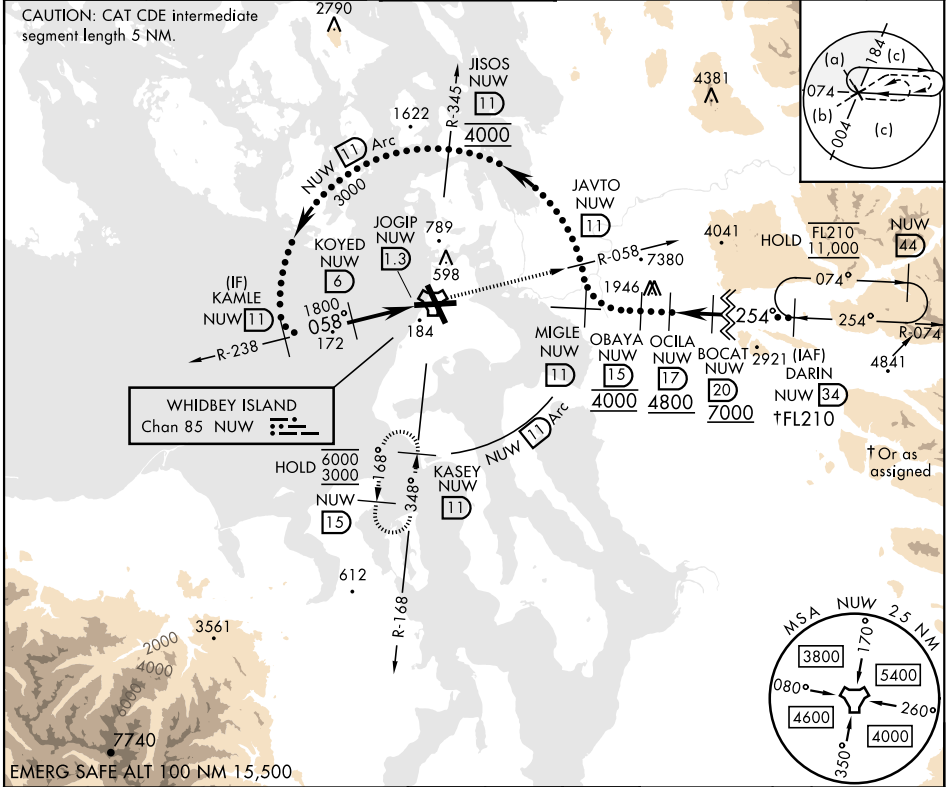
HI-TACAN Z RWY 7

TACAN Chan 85	APCH CRS 058°	Rwy ldg TDZE Arpt Elev	8000 25 47
-------------------------	-------------------------	------------------------------	---------------------------------------

[USN] WHIDBEY ISLAND NAS (AULT FLD) (KNUW)

▼ MISSED APPROACH: Climb to 3000 via NUW TACAN R-058 to JAVTO, then arc SE of NUW via 11 DME Arc to KASEY and hold.

ATIS 134.15 281.5	WHIDBEY APP CON 120.7 270.8 (EAST) 118.2 285.65 (WEST)	WHIDBEY TOWER 127.9 340.2	GND CON 121.75 336.4	CLNC DEL 135.1 379.9	ASR/PAR
-----------------------------	--	-------------------------------------	--------------------------------	--------------------------------	---------



NW-1, 26 DEC 2024 to 23 JAN 2025

NW-1, 26 DEC 2024 to 23 JAN 2025

	3000 ↑ NUW R-058	JAVTO NUW 11	NUW 11 Arc	ELEV 47	TDZE 25											
	<table border="1"> <tr> <th>CATEGORY</th> <th>C</th> <th>D</th> <th>E</th> </tr> <tr> <td>S-7</td> <td>440/60</td> <td>415</td> <td>(400-1½)</td> </tr> <tr> <td>C CIRCLING</td> <td>860-2½ 813 (900-2½)</td> <td>900-2¾ 853 (900-2¾)</td> <td>1200-3 1153 (1200-3)</td> </tr> </table>	CATEGORY	C	D	E	S-7	440/60	415	(400-1½)	C CIRCLING	860-2½ 813 (900-2½)	900-2¾ 853 (900-2¾)	1200-3 1153 (1200-3)			TDZL/CL Rwy 14 HIRL Rwy 7-25, 14-32
CATEGORY	C	D	E													
S-7	440/60	415	(400-1½)													
C CIRCLING	860-2½ 813 (900-2½)	900-2¾ 853 (900-2¾)	1200-3 1153 (1200-3)													

OAK HARBOR, WASHINGTON

48°21'N-122°39'W

WHIDBEY ISLAND NAS (AULT FLD) (KNUW)

Amdt 4 31OCT24

HI-TACAN Z RWY 7