

NASWI THREE (OBSTACLE) DEPARTURE

WHIDBEY ISLAND NAS (AULT FLD) (KNUW)

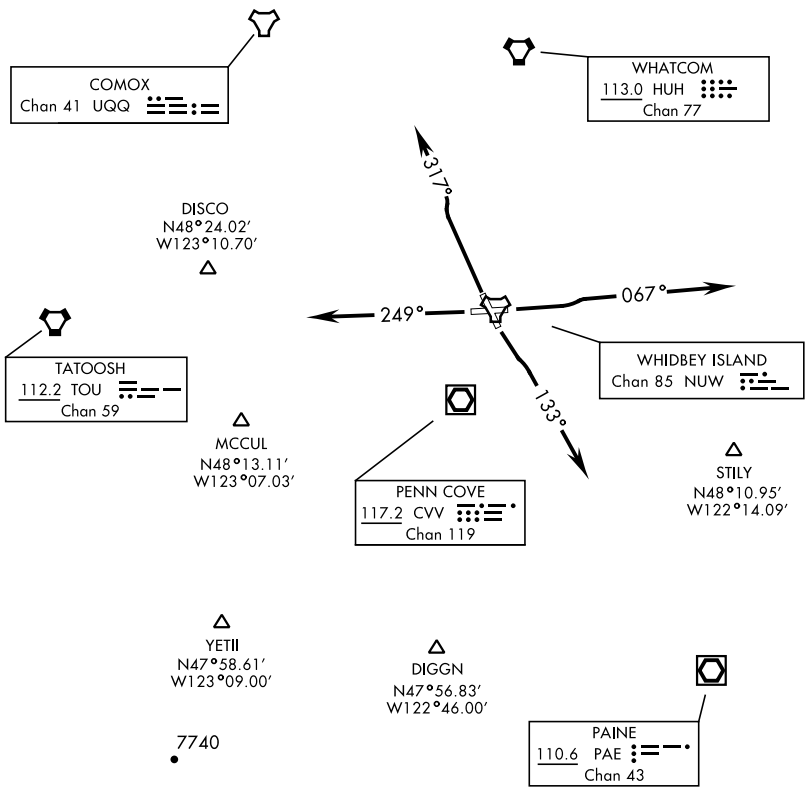
OAK HARBOR, WASHINGTON

ATIS 134.15 281.5
 CLNC DEL 135.1 379.9
 GND CON 121.75 336.4
 WHIDBEY TOWER 127.9 340.2
 WHIDBEY DEP CON 120.7 270.8 EAST
 118.2 285.65 WEST

[USN]

Rwy	Knots	60	120	180	240	300	360
7	V/V(fpm)	270	540	810	1080	1350	1620
14	V/V(fpm)	254	508	762	1016	1270	1524

Minimum Climb Rate to 500



NOTE: Chart not to scale



DEPARTURE ROUTE DESCRIPTION

All RWYS: If control instructions are not received by 10 DME of NUW TACAN, climb to 3000, intercept the NUW 11 DME ARC to join assigned route.

RWY 7: Climb to 2000 via heading 067°, then RADAR vectors to assigned route.

RWY 14: Climbing left turn to 2000 via heading 133°, then RADAR vectors to assigned route.

RWY 25: Climb to 2000 via heading 249°, then RADAR vectors to assigned route.

RWY 32: Climb to 2000 via heading 317°, then RADAR vectors to assigned route.

NASWI THREE (OBSTACLE) DEPARTURE

Orig 31OCT24

OAK HARBOR, WASHINGTON
WHIDBEY ISLAND NAS (AULT FLD) (KNUW)

NW-1, 26 DEC 2024 to 23 JAN 2025

NW-1, 26 DEC 2024 to 23 JAN 2025