

OAK HARBOR, WASHINGTON

RNAV (GPS) RWY 14

WAAS CH 50004 W14A	APCH CRS 137°	Rwy ldg TDZE 8000 Arprt Elev 47
-------------------------------------	----------------------	--

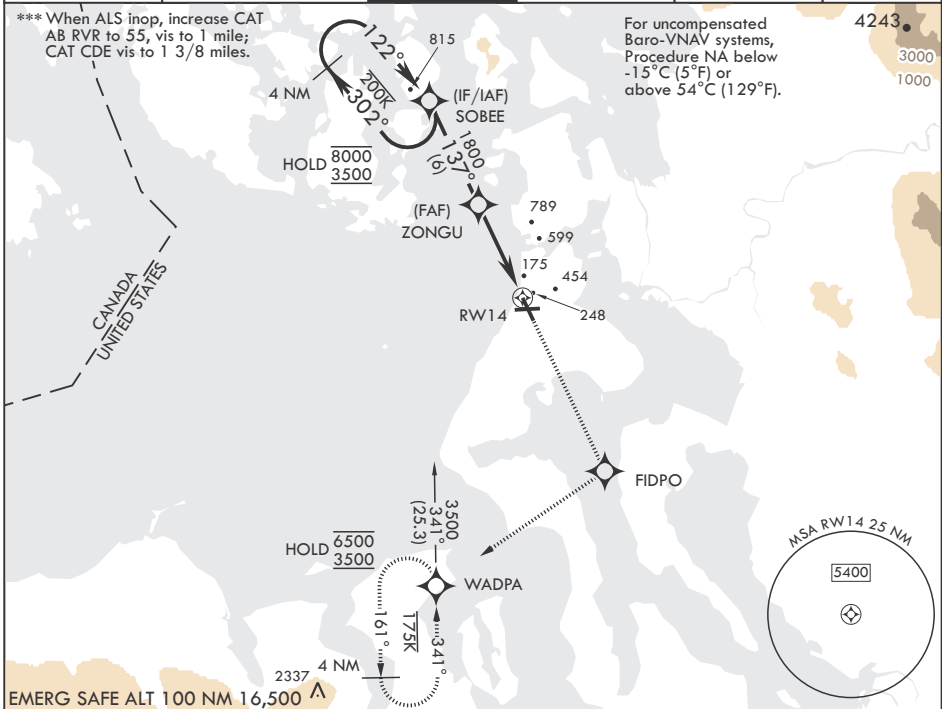
-(USN)

WHIDBEY ISLAND NAS (AULT FLD) (KNUW)

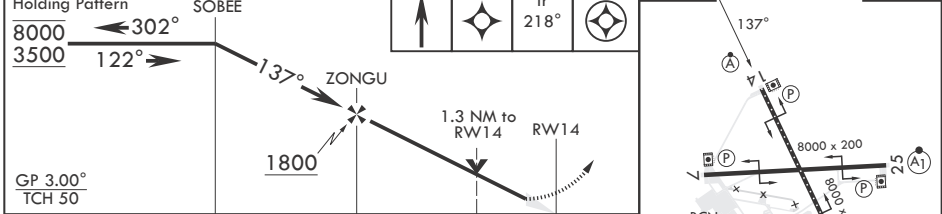
RNP APCH
 * When TDZ/CL lights inop, increase RVR to 24. When ALS inop, increase RVR to 40, vis to 3/4 mile.
 ** When ALS inop, increase RVR to 60, vis to 1 1/8 miles.

ALSF-2 MISSED APPROACH: Climb to 3500 direct FIDPO, and on track 218° to WADPA and hold. Do not exceed 230K.

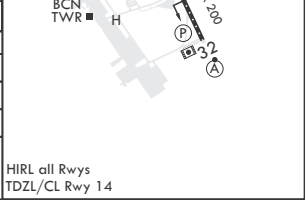
ATIS 134.15 281.5	APP CON/DEP CON 118.2 285.65 (W) 120.7 270.8 (E)	TOWER 127.9 340.2	GND CON 121.75 336.4	CLNC DEL 135.1 379.9	ASR/PAR
--------------------------	---	--------------------------	-----------------------------	-----------------------------	---------



EMERG SAFE ALT 100 NM 16,500 **A**



CATEGORY	A	B	C	D	E
LPV DA*		239/18	200	(200-1/2)	
LNAV/VNAV DA**		457/40	418	(500-3/4)	
LNAV MDA***	500/24	461 (500-1/2)	500/50	461 (500-1)	
C CIRCLING	760-1	713 (800-1)	860-2 1/2 813 (900-2 1/2)	900-2 3/4 853 (900-2 3/4)	1200-3 1153 (1200-3)



OAK HARBOR, WASHINGTON

48°21'N - 122°39'W

WHIDBEY ISLAND NAS (AULT FLD) (KNUW)

Amdt 5 31OCT24

RNAV (GPS) RWY 14

NW-1, 26 DEC 2024 to 23 JAN 2025

NW-1, 26 DEC 2024 to 23 JAN 2025