

OAK HARBOR, WASHINGTON

RNAV (GPS) RWY 25

WAAS CH 44487 W25A	APCH CRS 249°	Rwy ldg TDZE 8000 28 Arprt Elev 47
--------------------------	------------------	--

-(USN)

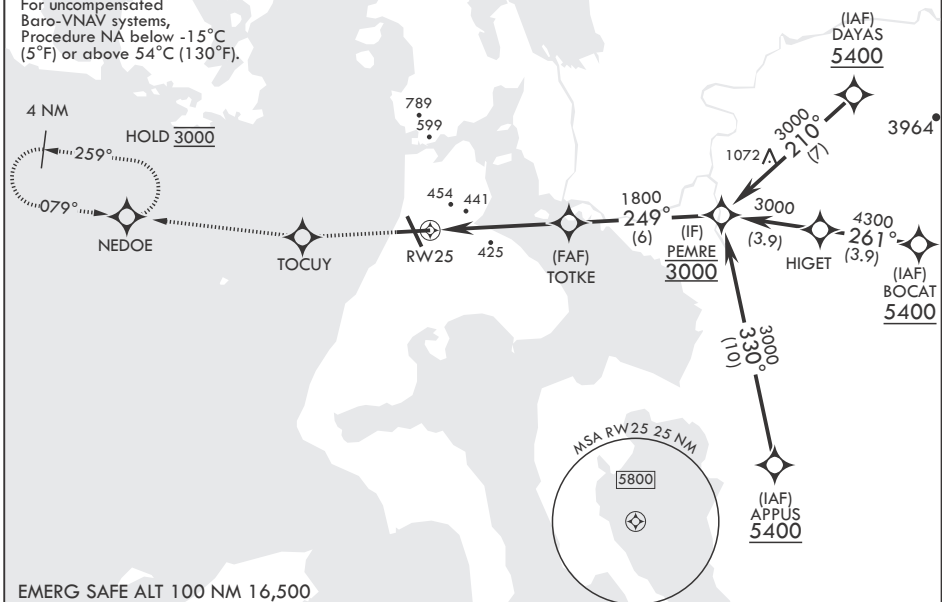
WHIDBEY ISLAND NAS (AULT FLD) (KNUW)

RNP APCH	ALSIF-1	AMISSED APPROACH: Climb to 3000 direct TOUCY and track 259° to NEDOE and hold.
<p>▼ * When ALS inop, increase RVR to 40, vis to 3/4 mile. ** When ALS inop, increase vis to 1 7/8 miles.</p>		

ATIS 134.15 281.5	APP CON/DEP CON 118.2 285.65 (W) 120.7 270.8 (E)	TOWER 127.9 340.2	GND CON 121.75 336.4	CLNC DEL 135.1 379.9	ASR/PAR
----------------------	--	----------------------	-------------------------	-------------------------	---------

*** When ALS inop, increase CAT
AB RVR to 55, vis to 1 mile;
CAT CDE vis to 1 7/8 miles.

For uncompensated
Baro-VNAV systems,
Procedure NA below -15°C
(5°F) or above 54°C (130°F).



NW-1, 26 DEC 2024 to 23 JAN 2025

NW-1, 26 DEC 2024 to 23 JAN 2025

3000 TOUCY	tr 259°	NEDOE	PEMRE	ELEV 47	TDZE 28
CATEGORY	A	B	C	D	E
LPV DA*	278/24		250	(300-1/2)	
LNAV/VNAV DA**	685-1 7/8		657	(700-1 1/8)	
LNAV MDA***	680/24	652 (700-1/2)	680-1 7/8	652	(700-1 1/8)
C CIRCLING	760-1	713 (800-1)	860-2 1/2 813 (900-2 1/2)	900-2 3/4 853 (900-2 3/4)	1200-3 1153 (1200-3)
OAK HARBOR, WASHINGTON			WHIDBEY ISLAND NAS (AULT FLD) (KNUW)		
Amdt 3 31OCT24			HIRL all Rwys TDZL/CL Rwy 14		

OAK HARBOR, WASHINGTON

48°21'N - 122°39'W

WHIDBEY ISLAND NAS (AULT FLD) (KNUW)

RNAV (GPS) RWY 25