

OAK HARBOR, WASHINGTON

RNAV (GPS) RWY 32

APCH CRS 317°	Rwy Idg 8000
	TDZE 47
	Arprt Elev 47

- (USN)

WHIDBEY ISLAND NAS (AULT FLD) (KNUW)

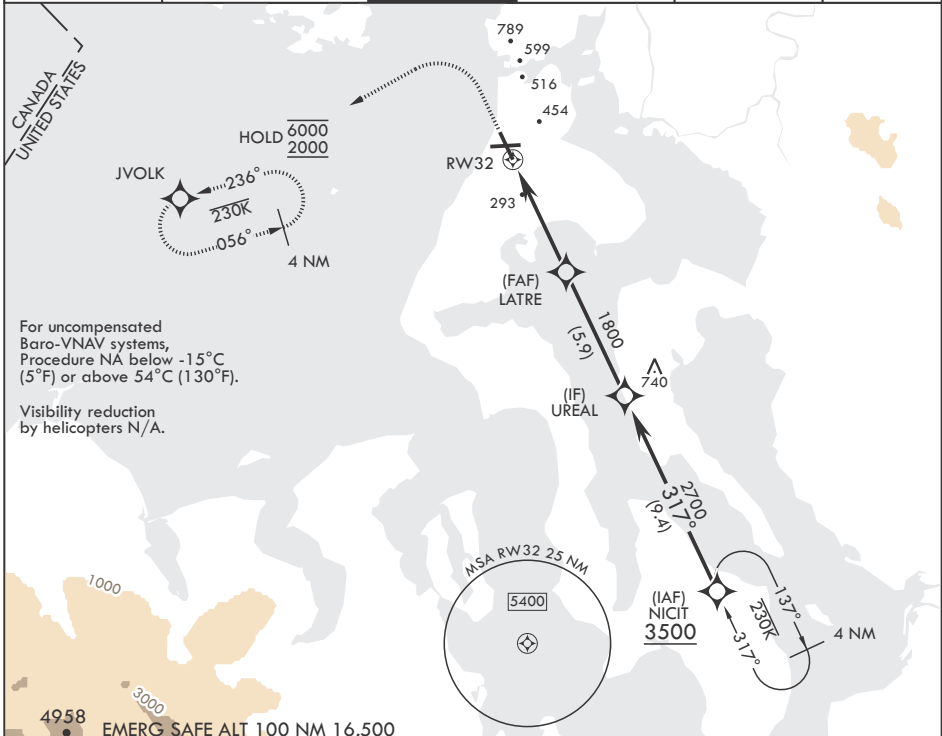
RNP APCH

ALSIF-2

MISSED APPROACH: Climb to 1200 then climbing left turn to 2000 direct JVOLK and hold.

▼ * When ALS inop, increase vis to 1 3/8 miles.
 ** When ALS inop, increase CAT AB RVR to 55, vis to 1 mile; CAT CDE vis to 1 3/8 miles.

ATIS 134.15 281.5	APP CON/DEP CON 118.2 285.65 (W) 120.7 270.8 (E)	TOWER 127.9 340.2	GND CON 121.75 336.4	CLNC DEL 135.1 379.9	ASR/PAR
----------------------	--	----------------------	-------------------------	-------------------------	---------

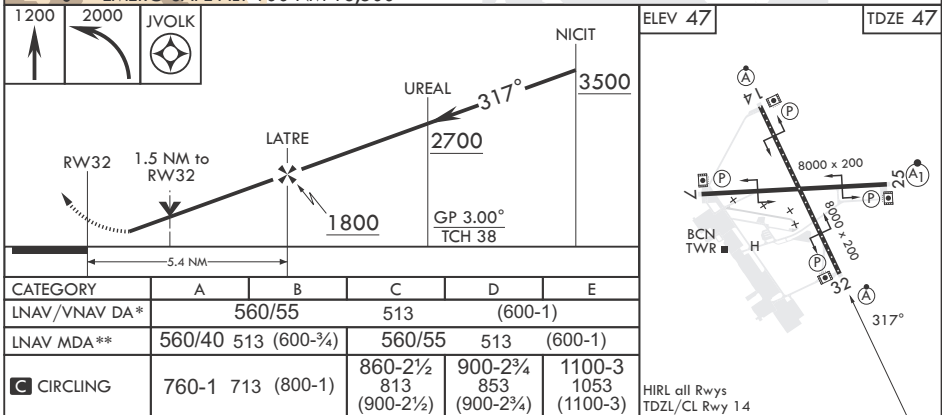


For uncompensated Baro-VNAV systems, Procedure NA below -15°C (5°F) or above 54°C (130°F).

Visibility reduction by helicopters N/A.

NW-1, 26 DEC 2024 to 23 JAN 2025

NW-1, 26 DEC 2024 to 23 JAN 2025



OAK HARBOR, WASHINGTON

48°21'N - 122°39'W

WHIDBEY ISLAND NAS (AULT FLD) (KNUW)

Amdt 2 31OCT24

RNAV (GPS) RWY 32