

OAK HARBOR, WASHINGTON

TACAN Y RWY 7

TACAN Chan 85	NUW	APCH CRS 058°	Rwy ldg TDZE Arprt Elev 8000 25 47
-------------------------	-----	-------------------------	--

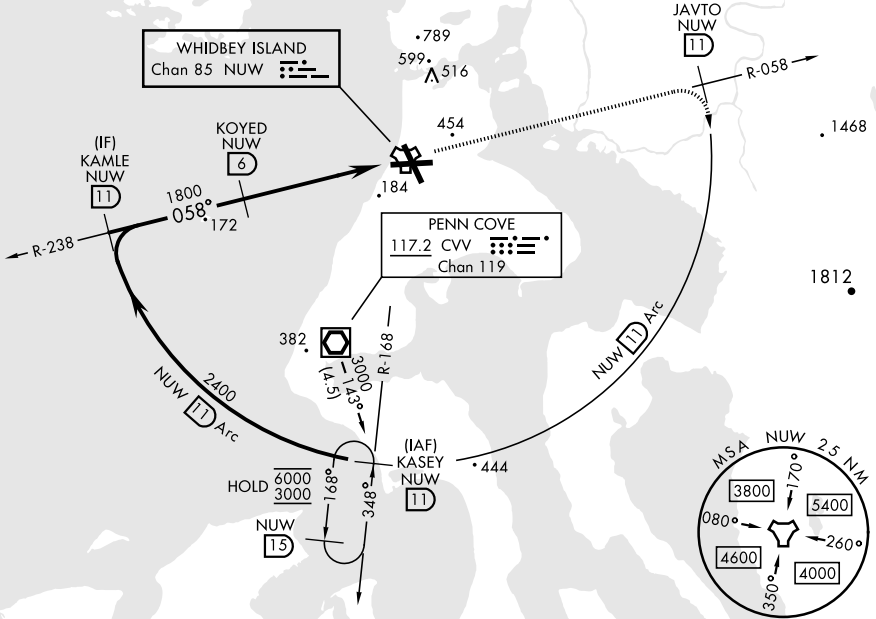
[USN]

WHIDBEY ISLAND NAS (AULT FLD) (KNUW)

▼ MISSED APPROACH: Climb to 3000 via NUW TACAN R-058 to JAVTO, then arc SE of NUW via 11 DME Arc to KASEY and hold.

ATIS 134.15 281.5	WHIDBEY APP CON 120.7 270.8 (E) 118.2 285.65 (W)	WHIDBEY TOWER 127.9 340.2	GND CON 121.75 336.4	CLNC DEL 135.1 379.9	ASR/PAR
-----------------------------	--	-------------------------------------	--------------------------------	--------------------------------	---------

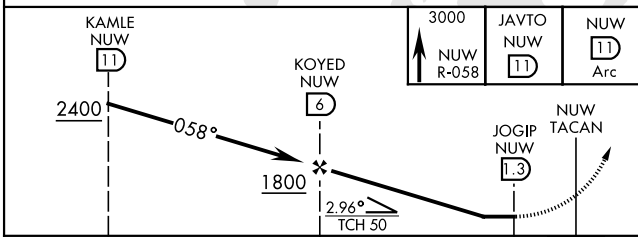
CAUTION: CAT CDE intmed seg length 5 NM



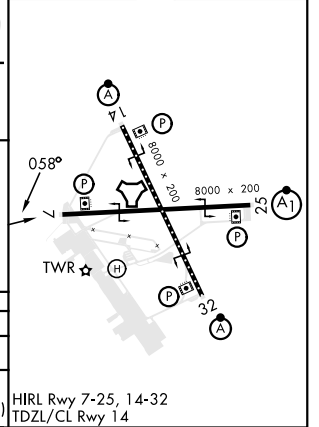
NW-1, 26 DEC 2024 to 23 JAN 2025

NW-1, 26 DEC 2024 to 23 JAN 2025

EMERG SAFE ALT 100 NM 15,500



ELEV	47	TDZE	25
------	----	------	----



CATEGORY	A	B	C	D	E
S-7	440/55	415 (400-1)	440/60	415 (400-1½)	
CIRCLING	760-1	713 (800-1)	860-2½ 813 (900-2½)	900-2¾ 853 (900-2¾)	1200-3 1153 (1200-3)

OAK HARBOR, WASHINGTON

48°21'N-122°39'W

WHIDBEY ISLAND NAS (AULT FLD) (KNUW)

Amdt 4 31OCT24

TACAN Y RWY 7