

WICHITA, KANSAS

ILS or LOC RWY 19R

LOC I-CWX 109.9	APCH CRS 188°	Rwy Ildg 19R 12,000 19L 12,007 TDZE 19R 1372 19L 1365 Arprt Elev 1372
---------------------------	-------------------------	---

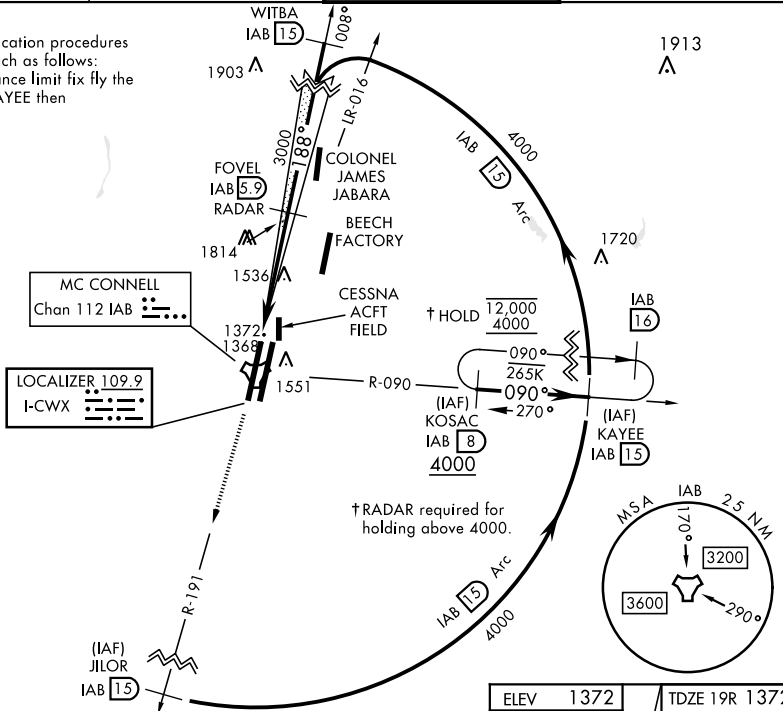
[USAF]

MC CONNELL AFB (KIAB)

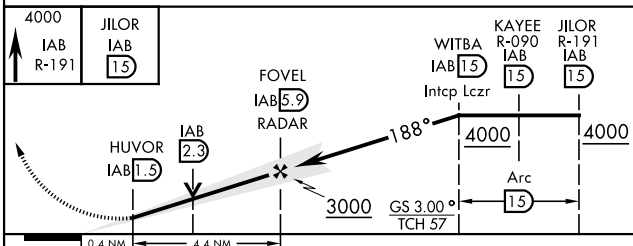
RADAR or DME required	ALSIF-1 	MISSED APPROACH: Climb to 4000 via IAB TACAN R-191 to 15 DME (JILOR). Expect further clearance from ATC.
<p>*When ALS inop, increase RVR to 40 and vis to 3/8 mile. **When ALS inop, increase CAT AB RVR to 55 and vis to 1 mile, CAT CDE vis to 1 3/8 miles. ***Circling not authorized W of Rwy 1L-19R.</p>		

D-ATIS 124.65 269.9	WICHITA APP CON 134.8 269.1	TOWER 127.25 291.775	GND CON 118.0 275.8
-------------------------------	---------------------------------------	--------------------------------	-------------------------------

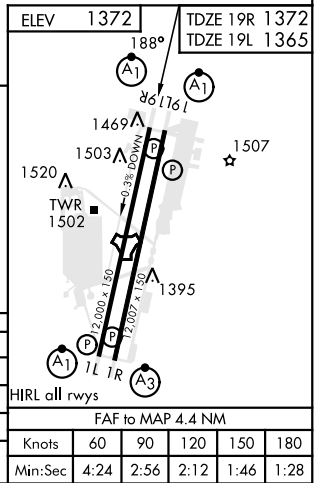
ATC lost communication procedures on missed approach as follows:
At 15 DME clearance limit fix fly the 15 DME arc to KAYEE then KOSAC and hold.



EMERG SAFE ALT 100 NM 4000



CATEGORY	A	B	C	D	E
S-ILS 19R *	1572/24		200	(200-1/2)	
S-LOC 19R **	1820/24	448 (500-7%)	1820/45	448	(500-7%)
SIDESTEP 19L	1820/55	455 (500-1)	1820-1 3/8	455	(500-1 3/8)
CIRCLING ***	1900-1	528 (600-1)	1900-1 1/2	528 (600-1/2)	2400-3 1028 (1100-3)



FAF to MAP 4.4 NM					
Knots	60	90	120	150	180
Min:Sec	4:24	2:56	2:12	1:46	1:28

WICHITA, KANSAS
Amdt 6 28DEC23

37°37'N-97°16'W

MC CONNELL AFB (KIAB)

ILS or LOC RWY 19R

NC-2, 26 DEC 2024 to 23 JAN 2025

NC-2, 26 DEC 2024 to 23 JAN 2025