

WICHITA, KANSAS

RNAV (GPS) RWY 1R

APCH CRS	Rwy Idg	12,007
005°	TDZE	1347
	Arpt Elev	1372

- (USAF)

MC CONNELL AFB (KIAB)

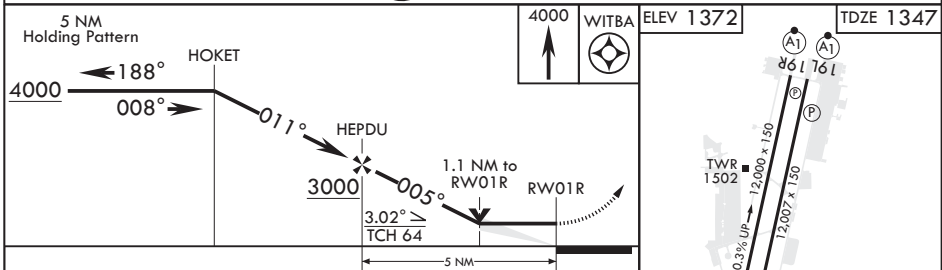
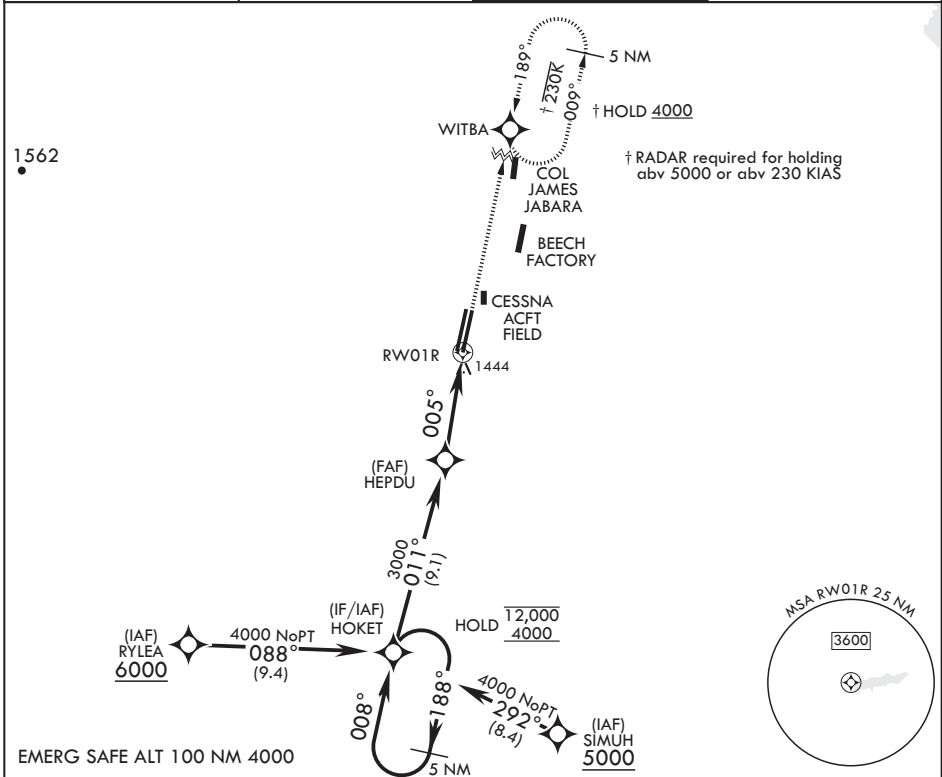
DME/DME RNP-0.3 NA



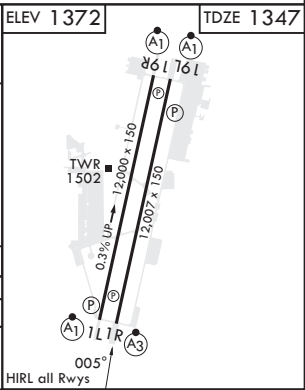
MISSED APPROACH: Climbing right turn to 4000 direct WITBA and hold.

* When ALS inop, increase CAT AB RVR to 55, vis to 1 mile; CAT CDE RVR to 60, vis to 1 1/8 miles.
 ** Circling not authorized west of Rwy 1L-19R.

D-ATIS 124.65 269.9	WICHITA APP CON 134.8 269.1	TOWER 127.25 291.775	GND CON 118.0 275.8
------------------------	--------------------------------	-------------------------	------------------------



CATEGORY	A	B	C	D	E
LNAV MDA*	1740/40		393	(400-3/4)	
C CIRCLING**	1900-1 528 (600-1)		1900-1½ 528 (600-1½)	2400-3 1028 (1100-3)	



WICHITA, KANSAS
 Amdt 5 28DEC23

37°37'N - 97°16'W

MC CONNELL AFB (KIAB)

RNAV (GPS) RWY 1R

NC-2, 26 DEC 2024 to 23 JAN 2025

NC-2, 26 DEC 2024 to 23 JAN 2025