

HI-TACAN RWY 15C

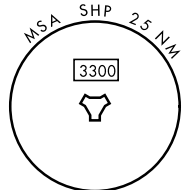
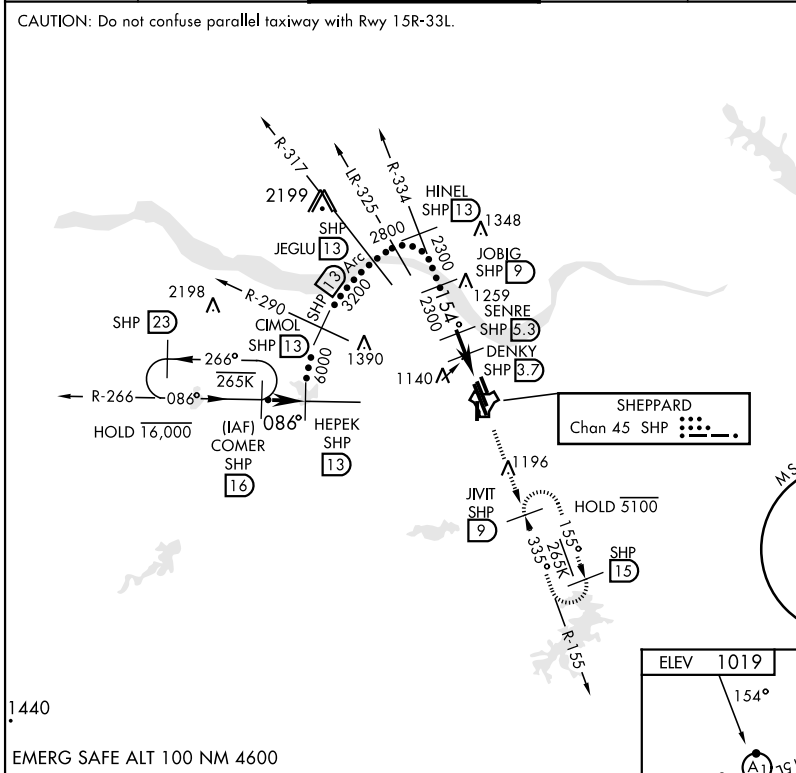
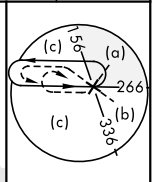
TACAN SHP Chan 45	APCH CRS 154°	Rwy ldg 10,003 TDZE 1003 Arprt Elev 1019	[USAF]	SHEPPARD AFB/WICHITA FALLS MUNI (KSPS)
--------------------------	----------------------	---	--------	--

▼ * When ALS inop, increase CAT CDE vis to 1½ miles.
 ** Circling not authorized W of Rwy 15R-33L.

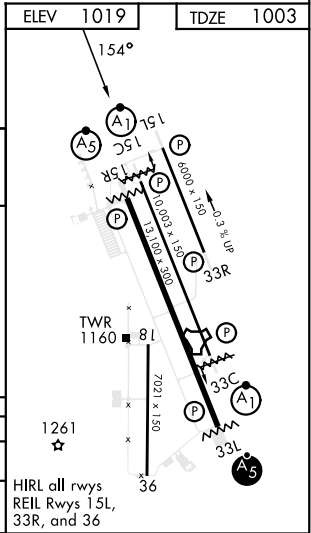
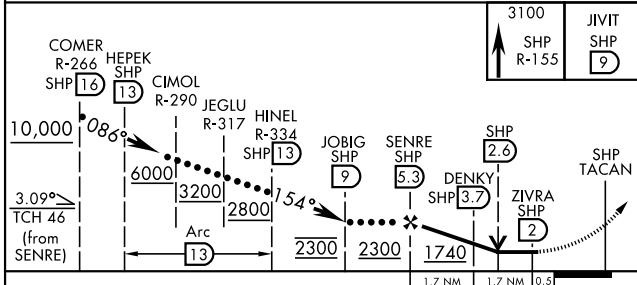
ALSF-1 MISSED APPROACH: Climb and maintain 3100, intercept SHP TACAN R-155 to SHP R-155/9 DME (JIVIT) and hold.

ATIS * 132.05 269.9	APP CON 118.2 269.025	TOWER * 119.75 279.525 (CTAF)	GND CON 125.5 289.4	CLNC DEL 121.2 282.225	ASR
----------------------------	------------------------------	--------------------------------------	----------------------------	-------------------------------	-----

CAUTION: Do not confuse parallel taxiway with Rwy 15R-33L.



1440
 EMERG SAFE ALT 100 NM 4600



CATEGORY	C	D	E
S-15C *	1420-¾	417 (500-¾)	
CIRCLING **	1480-1½ 461 (500-1½)	2020-3 1001 (1100-3)	2080-3 1061 (1100-3)

HIRL all rwy's REIL Rwy's 15L, 33R, and 36

HI-TACAN RWY 15C

SC-2, 26 DEC 2024 to 23 JAN 2025

SC-2, 26 DEC 2024 to 23 JAN 2025