

HI-TACAN RWY 15R

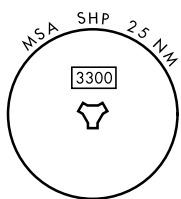
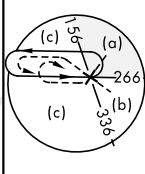
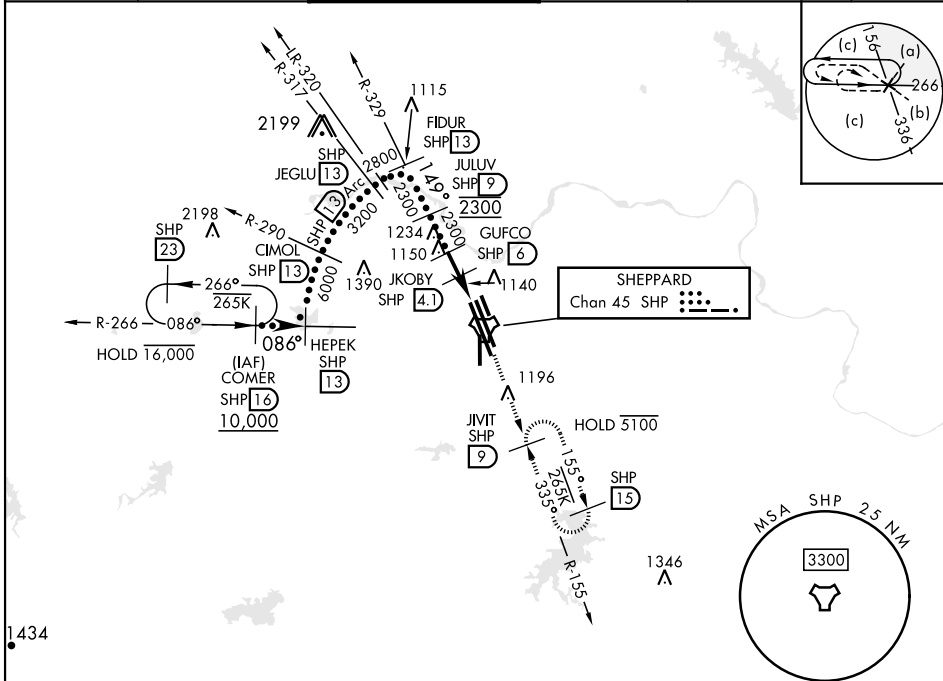
TACAN SHP Chan 45	APCH CRS 149°	Rwy ldg 13,100 TDZE 998 Arprt Elev 1019
----------------------	------------------	---

[USAF]

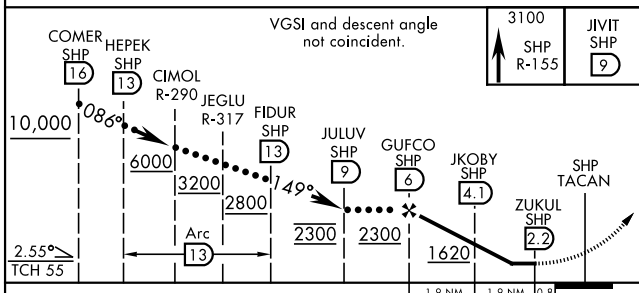
SHEPPARD AFB/WICHITA FALLS MUNI (KSPS)

<p>▼ * When ALS inop, increase CAT CDE vis to 1¼ miles. ** Circling not authorized W of Rwy 15R-33L.</p>	<p>MALS R A5</p>	<p>MISSED APPROACH: Climb and maintain 3100, intercept SHP TACAN R-155 to SHP R-155/9 DME (JVIT) and hold.</p>
--	----------------------	--

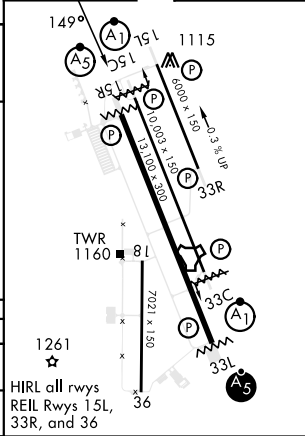
ATIS * 132.05 269.9	APP CON 118.2 269.025	TOWER * 119.75 0 279.525 (CTAF)	GND CON 125.5 289.4	CLNC DEL 121.2 282.225	ASR
------------------------	--------------------------	------------------------------------	------------------------	---------------------------	-----



CAUTION:
Do not confuse parallel taxiway with Rwy 15R-33L.
EMERG SAFE ALT 100 NM 4600



ELEV 1019	TDZE 998
-----------	----------



CATEGORY	C	D	E
S-15R*	1420-¾	422 (500-¾)	
CIRCLING**	1480-1½ 461 (500-1½)	2020-3 1001 (1100-3)	2080-3 1061 (1100-3)

HI-TACAN RWY 15R

SC-2, 26 DEC 2024 to 23 JAN 2025

SC-2, 26 DEC 2024 to 23 JAN 2025