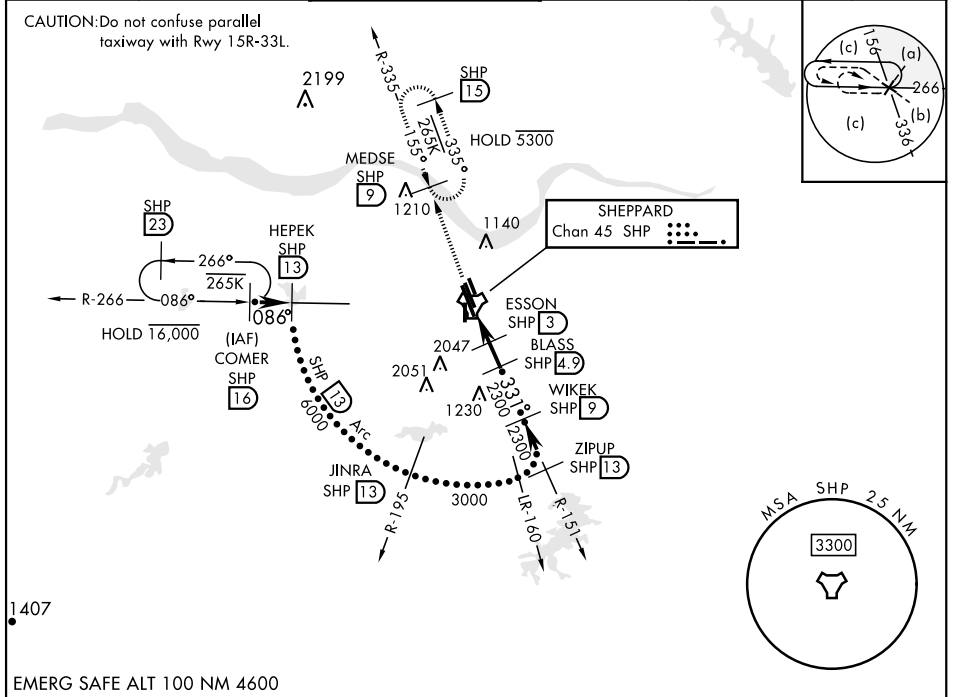


HI-TACAN RWY 33C

TACAN SHP Chan 45	APCH CRS 331°	Rwy ldg 10,003 TDZE 989 Arprt Elev 1019	[USAF]	SHEPPARD AFB/WICHITA FALLS MUNI (KSPS)
----------------------	------------------	--------------------------------------------------------	--------	----------------------------------------

▼ * When ALS inop, increase CAT CDE vis to 1 mile.
 ** Circling not authorized W of Rwy 15R-33L.

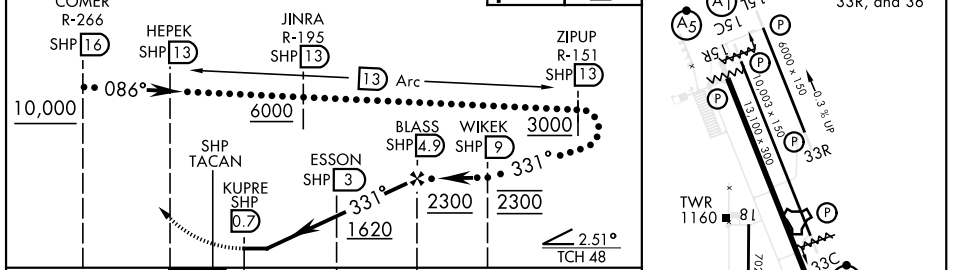
ALSF-1 	MISSED APPROACH: Climb and maintain 3300, intercept SHP TACAN R-335 to SHP R-335/9 DME (MEDSE) and hold.				
ATIS * 132.05 269.9	APP CON 118.2 269.025	TOWER * 119.75 0 279.525 (CTAF)	GND CON 125.5 289.4	CLNC DEL 121.2 282.225	ASR



SC-2, 26 DEC 2024 to 23 JAN 2025

SC-2, 26 DEC 2024 to 23 JAN 2025

EMERG SAFE ALT 100 NM 4600	VGSI and descent angles not coincident.	3300 SHP R-335	MEDSE SHP 9	ELEV 1019	TDZE 989
----------------------------	-----------------------------------------	----------------	-------------	-----------	----------



CATEGORY	C	D	E
S-33C *	1340-5%	351 (400-5%)	
CIRCLING **	1480-1½ 461 (500-1½)	2020-3 1001 (1100-3)	2080-3 1061 (1100-3)

WICHITA FALLS, TEXAS 33°59'N-98°30'W SHEPPARD AFB/WICHITA FALLS MUNI (KSPS)

HI-TACAN RWY 33C